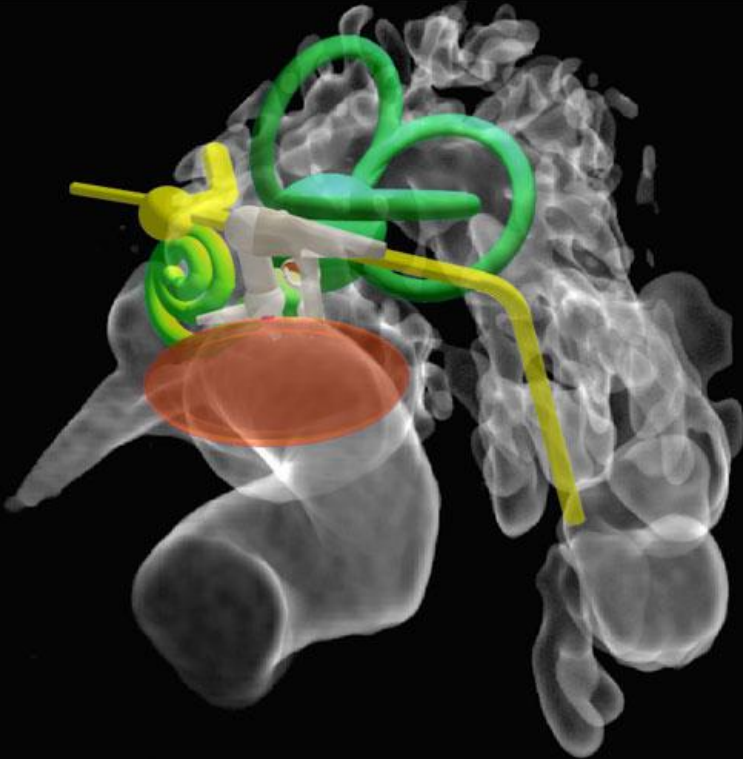


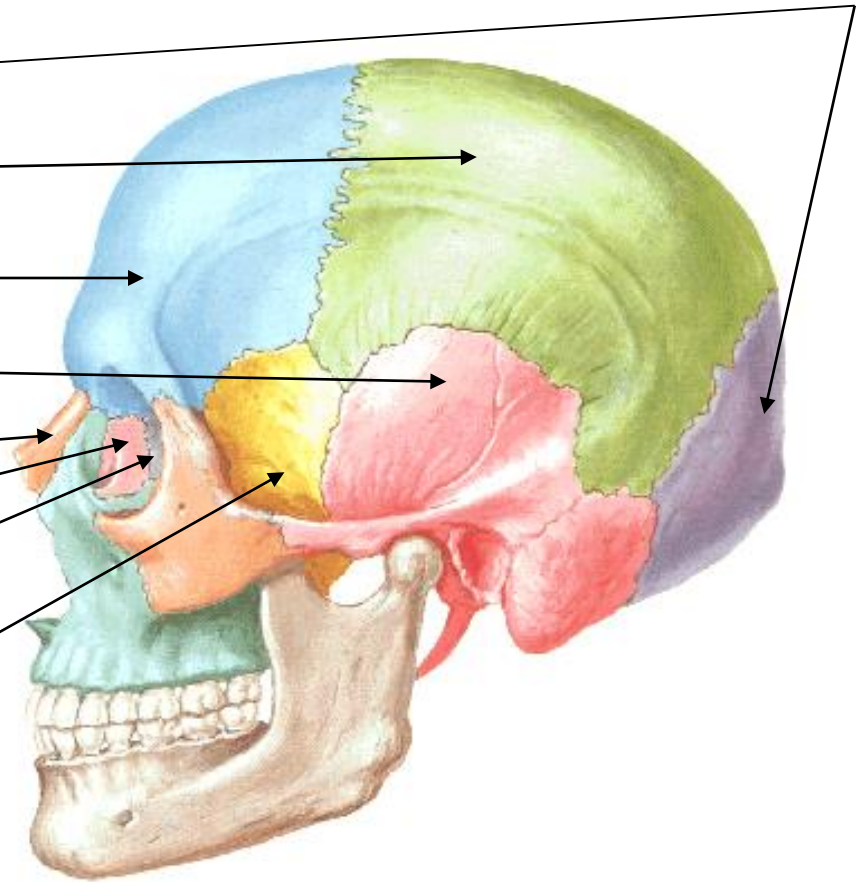
Spánková kost

Os temporale



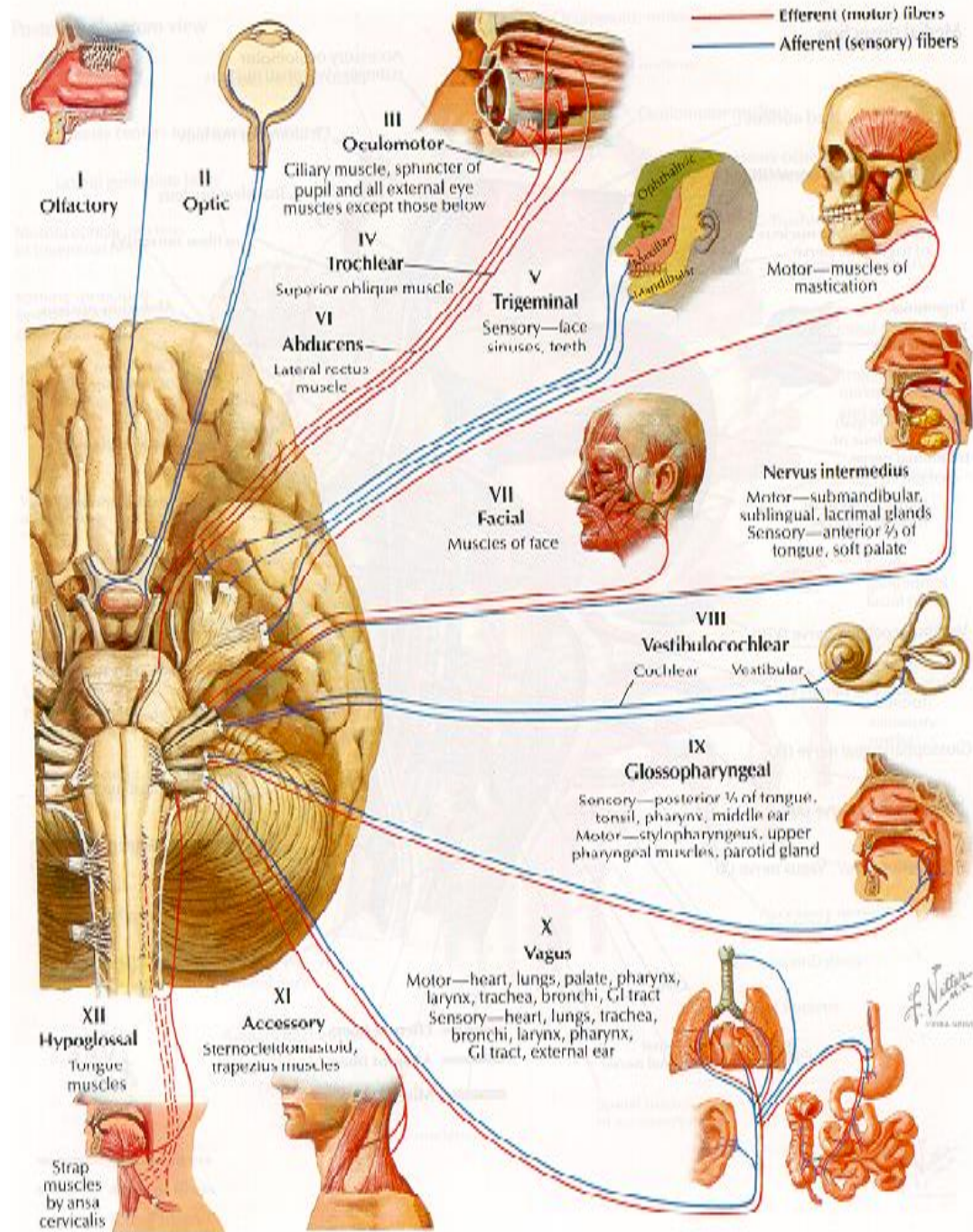
Neurocranium

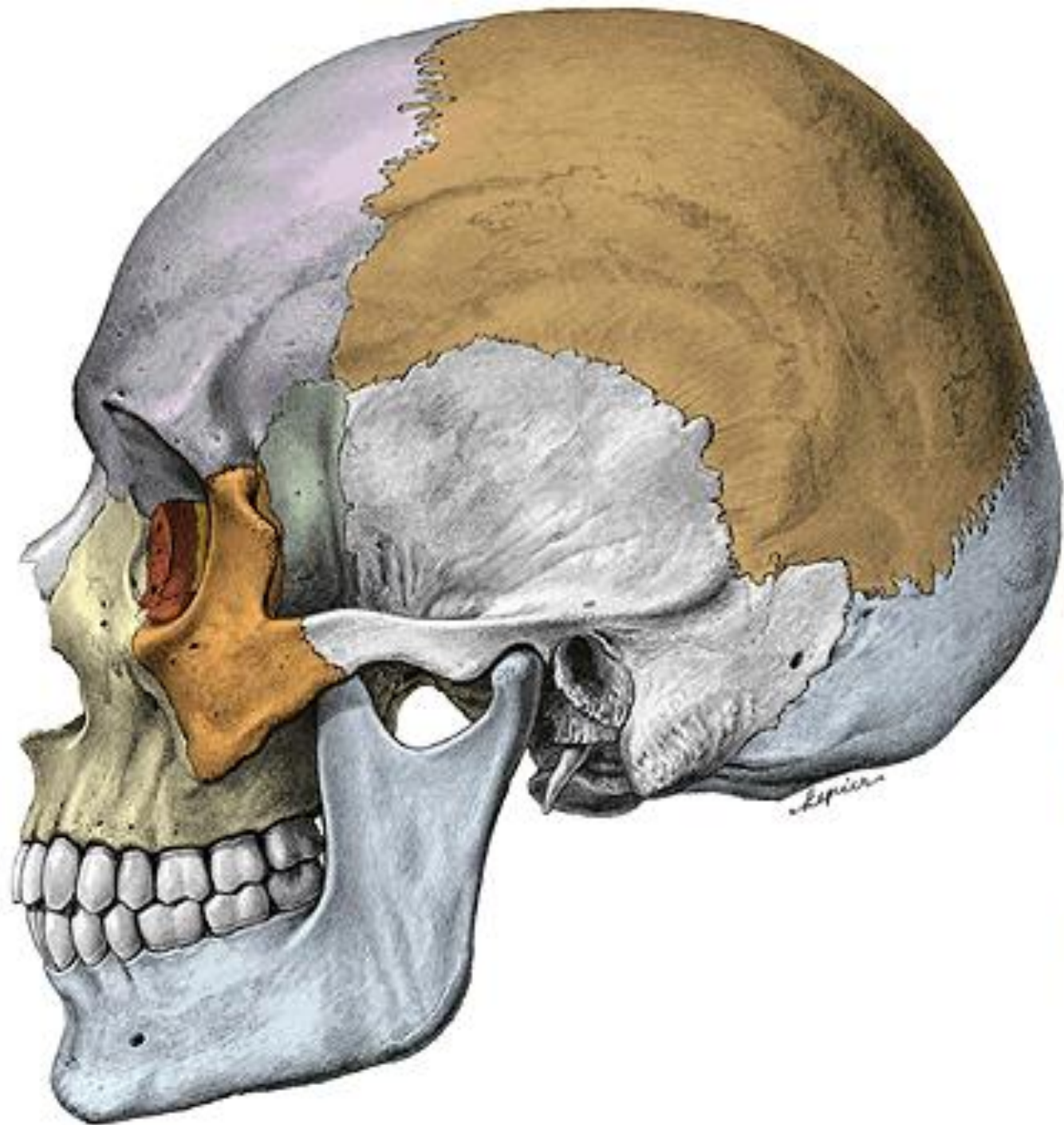
- os occipitale
- os parietale
- os frontale
- **os temporale**
- os nasale
- os lacrimale
- os ethmoidale
- os sphenoidale
- vomer
- concha nasalis inferior



Hlavové nervy (*Nervi craniales*)

- n. V = n. trigeminus
(*trojklaný nerv*)
- n. VII = n. facialis
(*lícní nerv*)
- n. VIII. = n.
vestibulocochlearis
(*sluchorovnovážný nerv*)
- N. IX. = n.
glossopharygeus
(*jazykohltanový nerv*)
- n. X. = n. vagus
(*bloudivý nerv*)





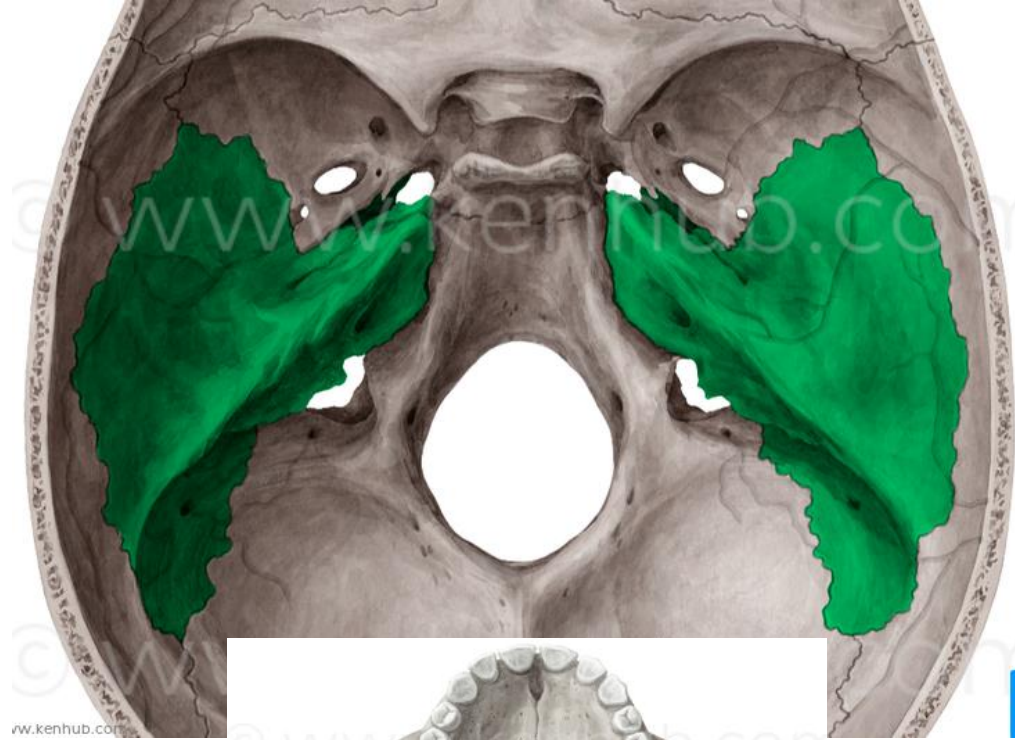
Spánková kost (*Os temporale*)

neurocranium

- pars petrosa
- pars tympanica
- pars squamosa

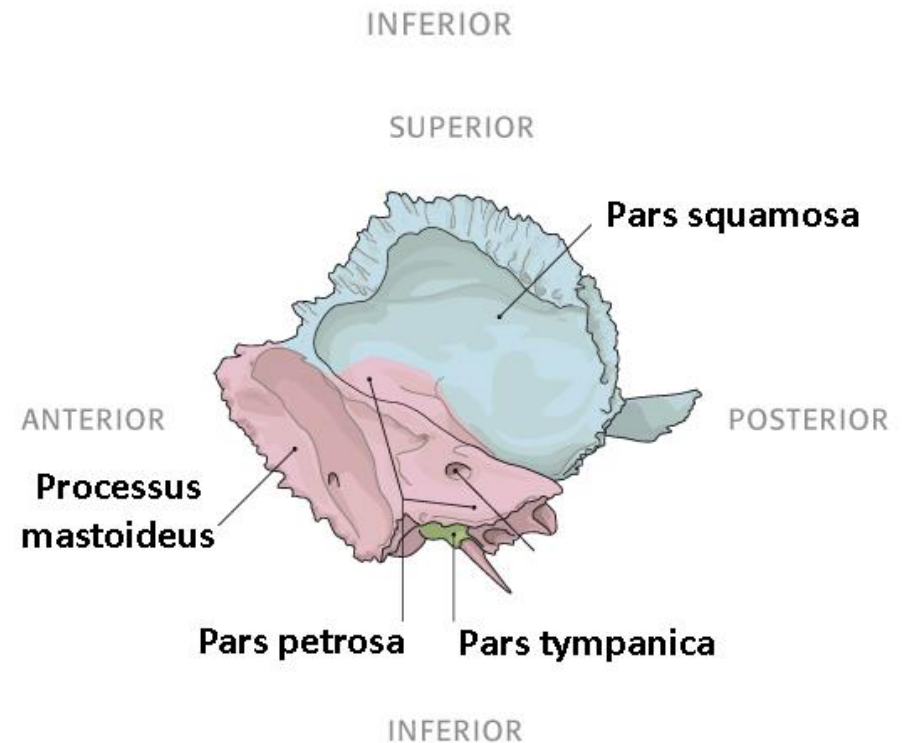
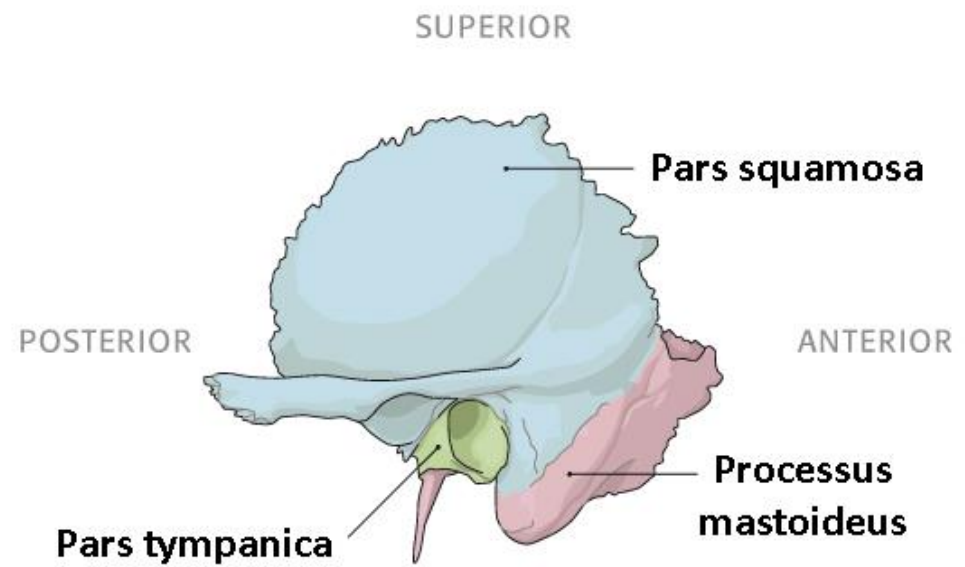
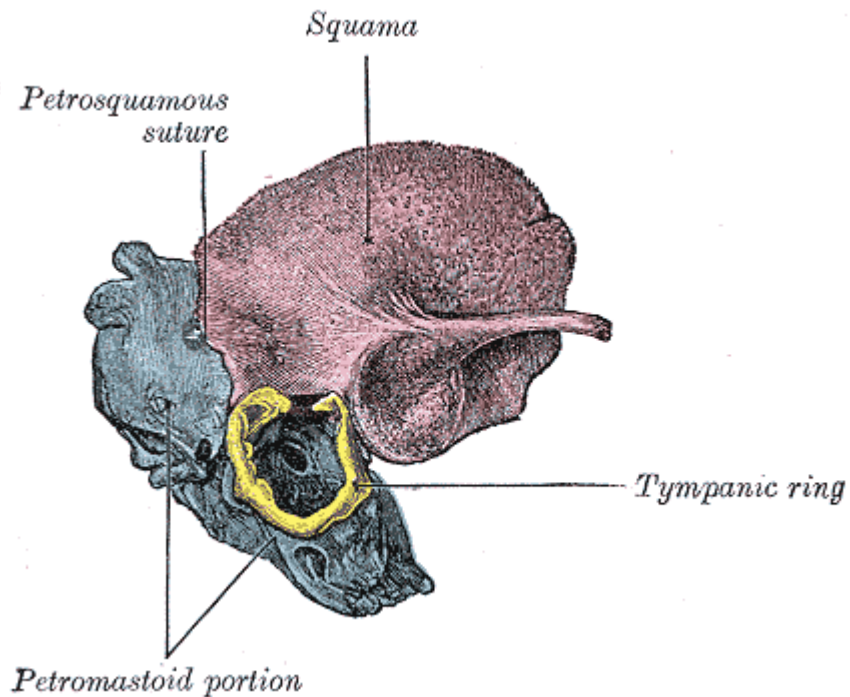
- cavitas tympani

- dezmogenní i
cndrogenní původ



Spánková kost (*Os temporale*)

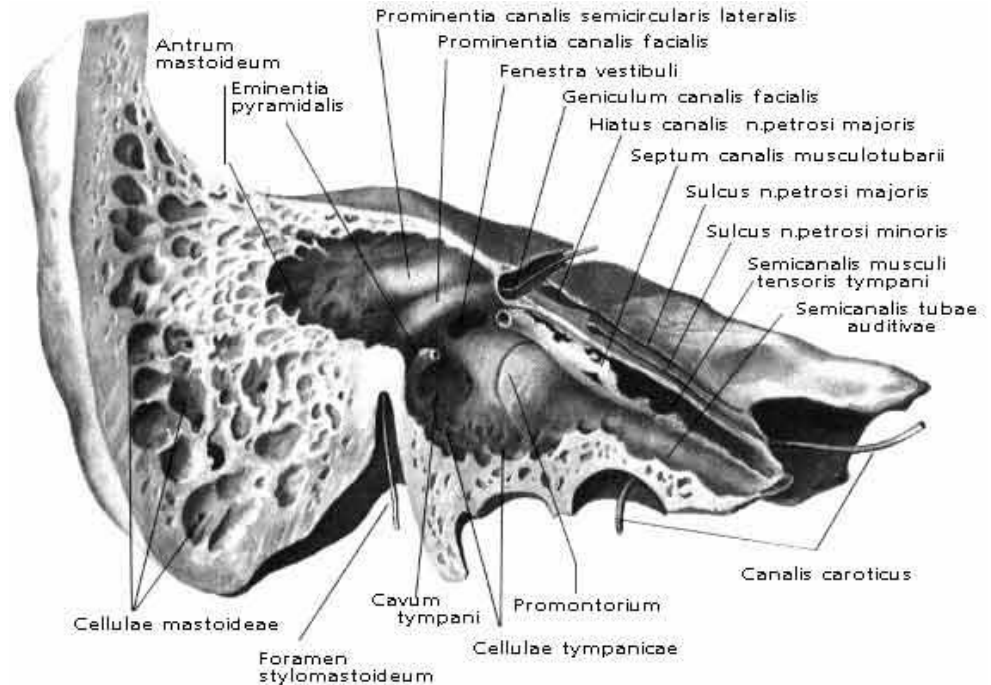
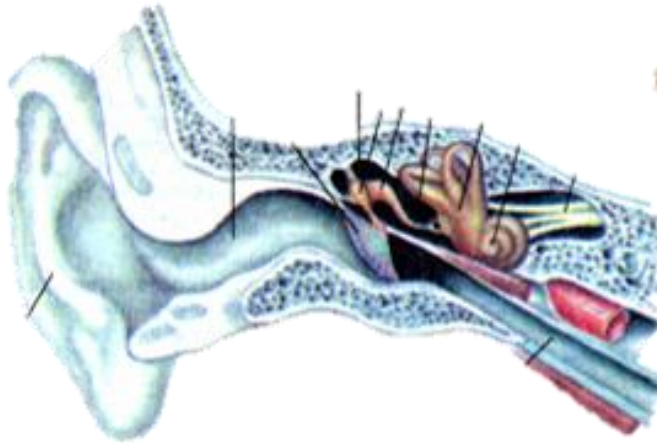
- pars petrosa
- pars tympanica
- pars squamosa



Dutiny

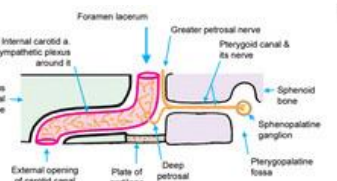
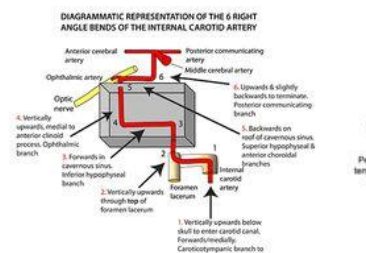
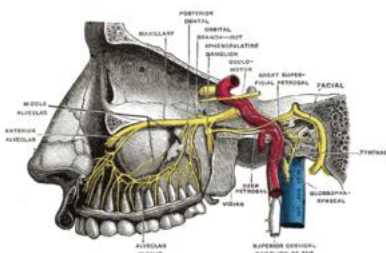
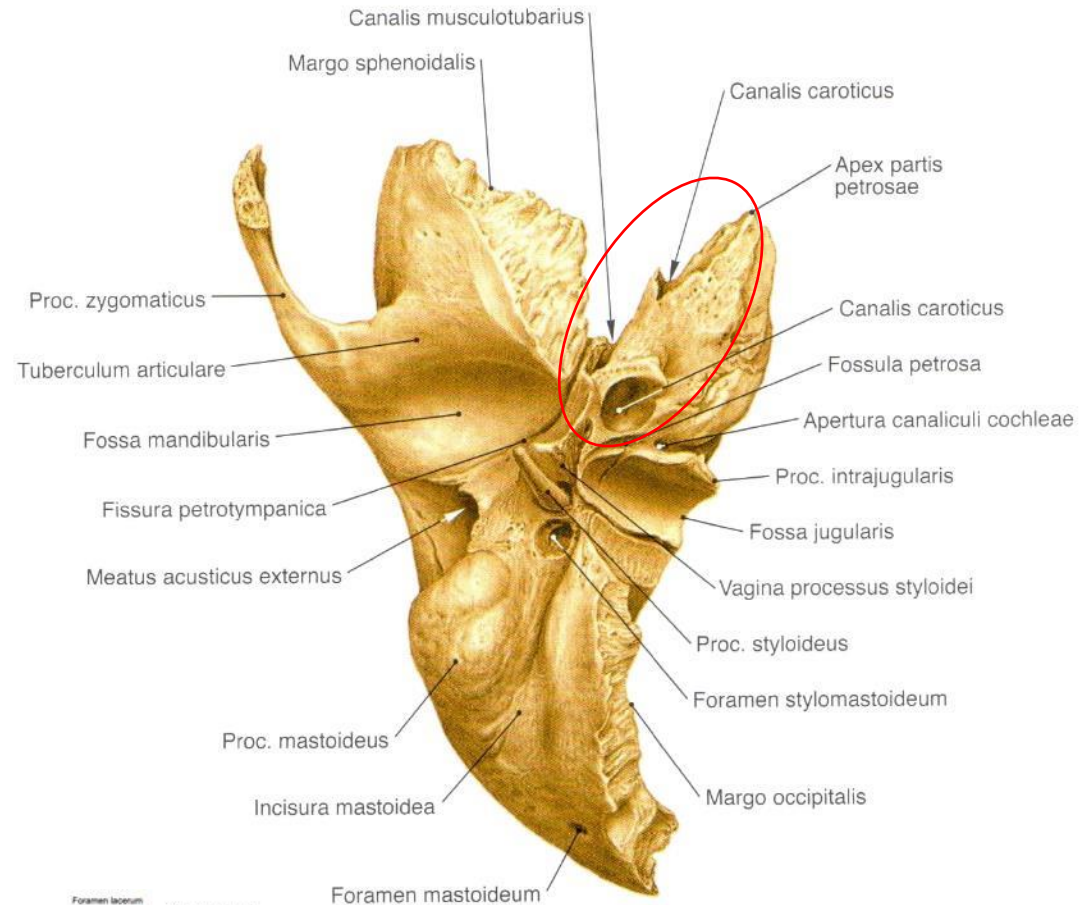


- středoušní dutina
 - bubínková dutina
 - sluchové kůstky
 - antrum mastoideum + cellulae mastoideae
- vnitřní ucho
 - rovnovážné ústrojí
 - sluchové ústrojí
- canalis nervi facialis



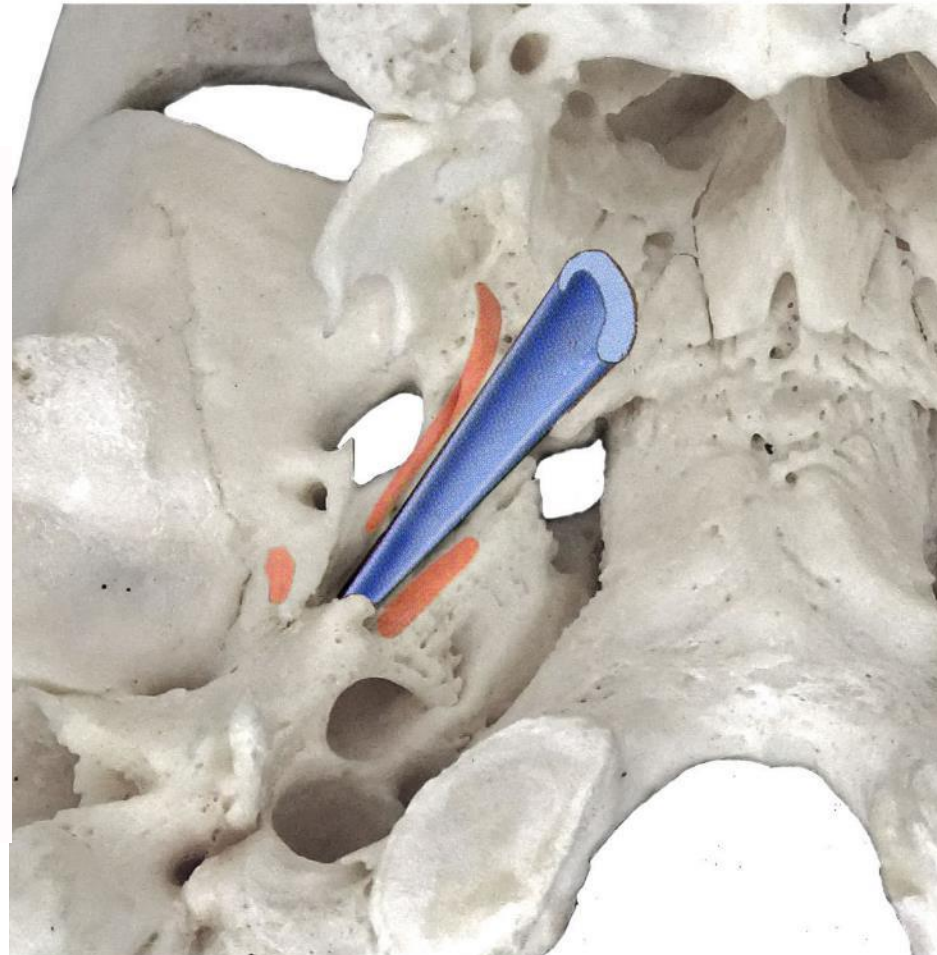
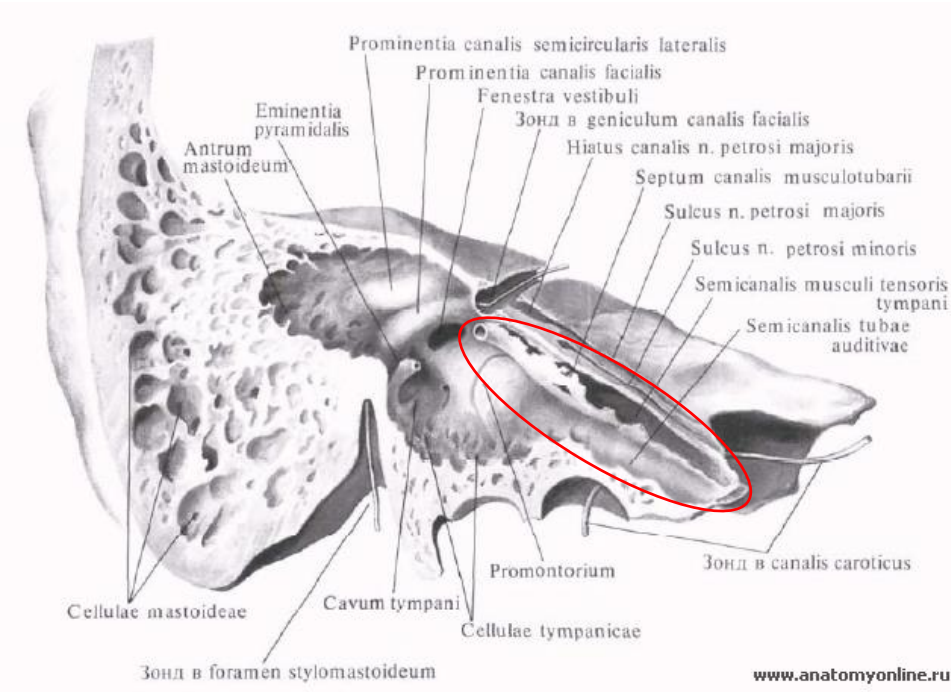
Pars petrosa (skalní část) (dříve os petrosus, pyramis, pyramida)

Apex partis petrosae
Canalis caroticus
Apertura interna canalis carotici / Vnitřní ústí krkavického kanálu
Canaliculi caroticotympanici / Krkavicobubínkové kanálky
Canalis musculotubarius / Svalotrubicový kanál
Semicanalis muscoli tensoris tympani / Polokanál bubínkového napínače
Semicanalis tubae auditivae / Polokanál sluchové trubice
Septum canalis musculotubarii



Canalis musculotubarius

- semicanalis muscoli tensoris tympani / polokanáľ bubínkového napínača
- semicanalis tubae auditivae / polokanáľ sluchové trubice
- septum canalis musculotubarii



Facies anterior partis petrosae

Impressio trigeminalis

Tegmen tympani / Středoušní strop

Eminentia arcuata

Sulcus nervi petrosi majoris

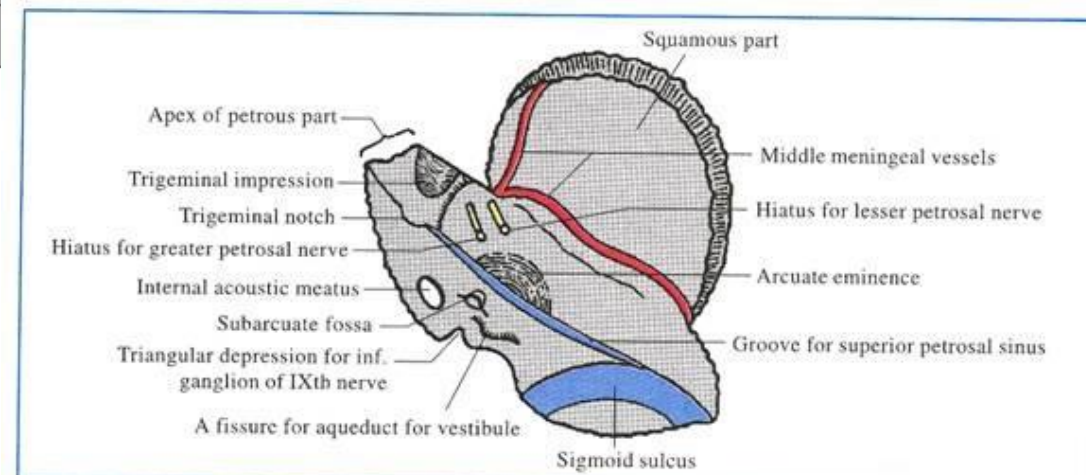
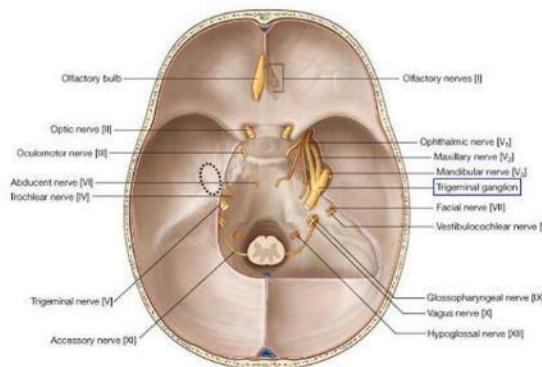
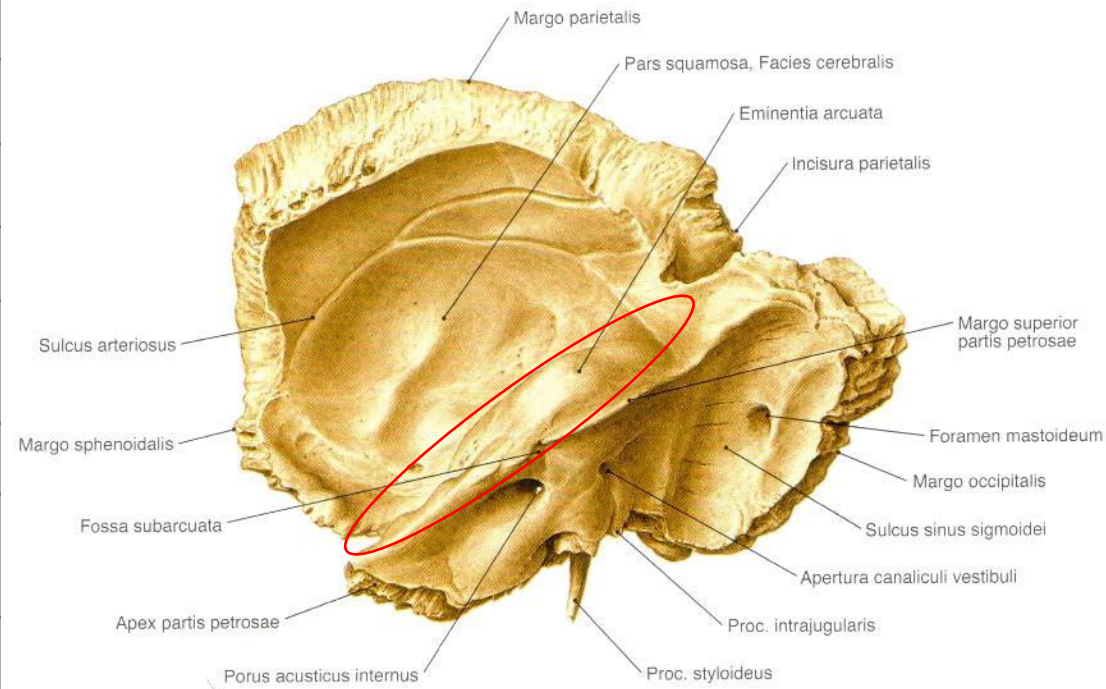
**Hiatus canalis nervi petrosi majoris +
Canalis nervi petrosi majoris**

Sulcus nervi petrosi minoris

**Hiatus canalis nervi petrosi minoris +
Canalis nervi petrosi minoris**

**Margo superior partis petrosae (dříve
crista pyramidis)**

Sulcus sinus petrosi superioris



Nervus petrosus major et minor

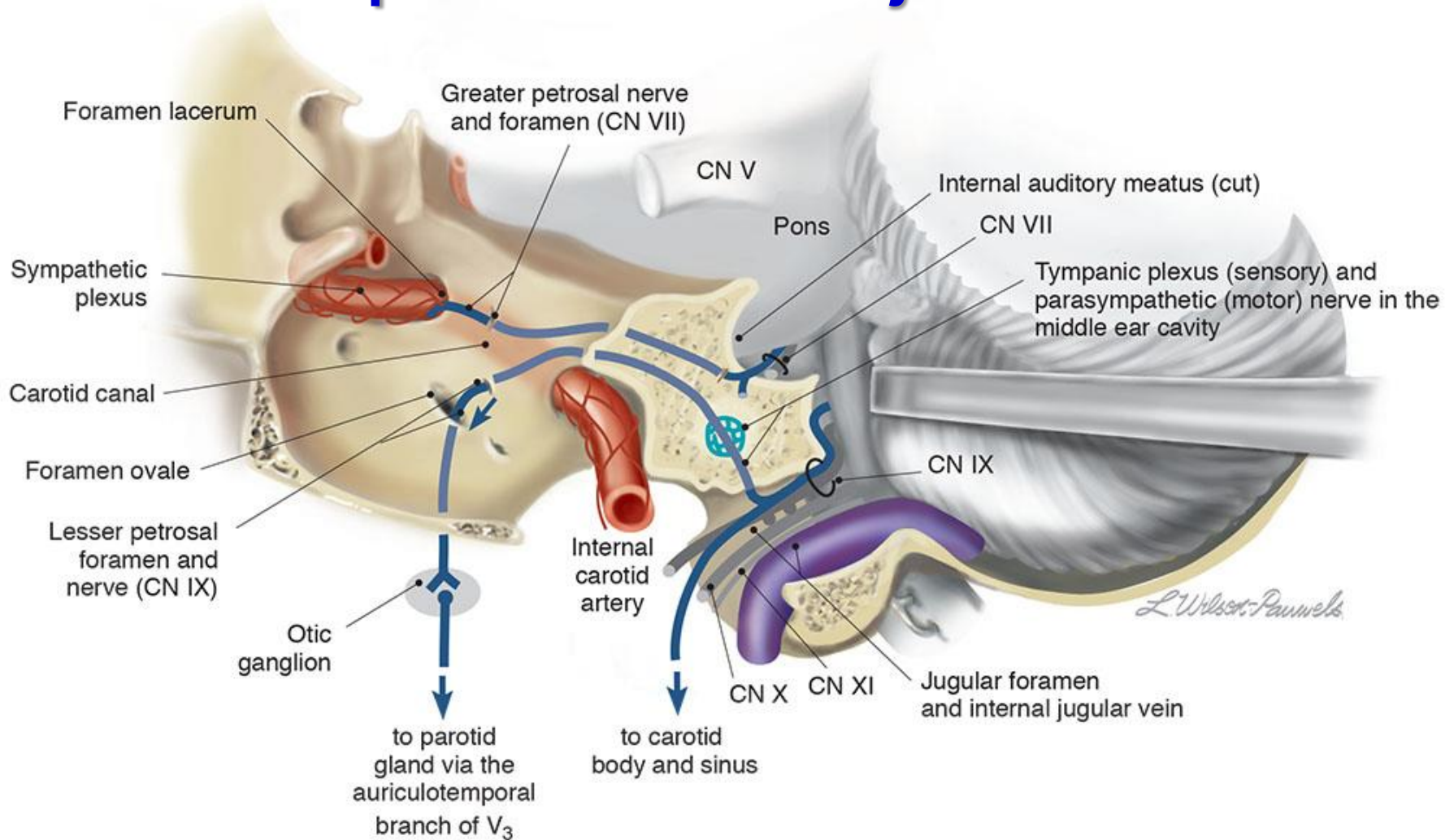
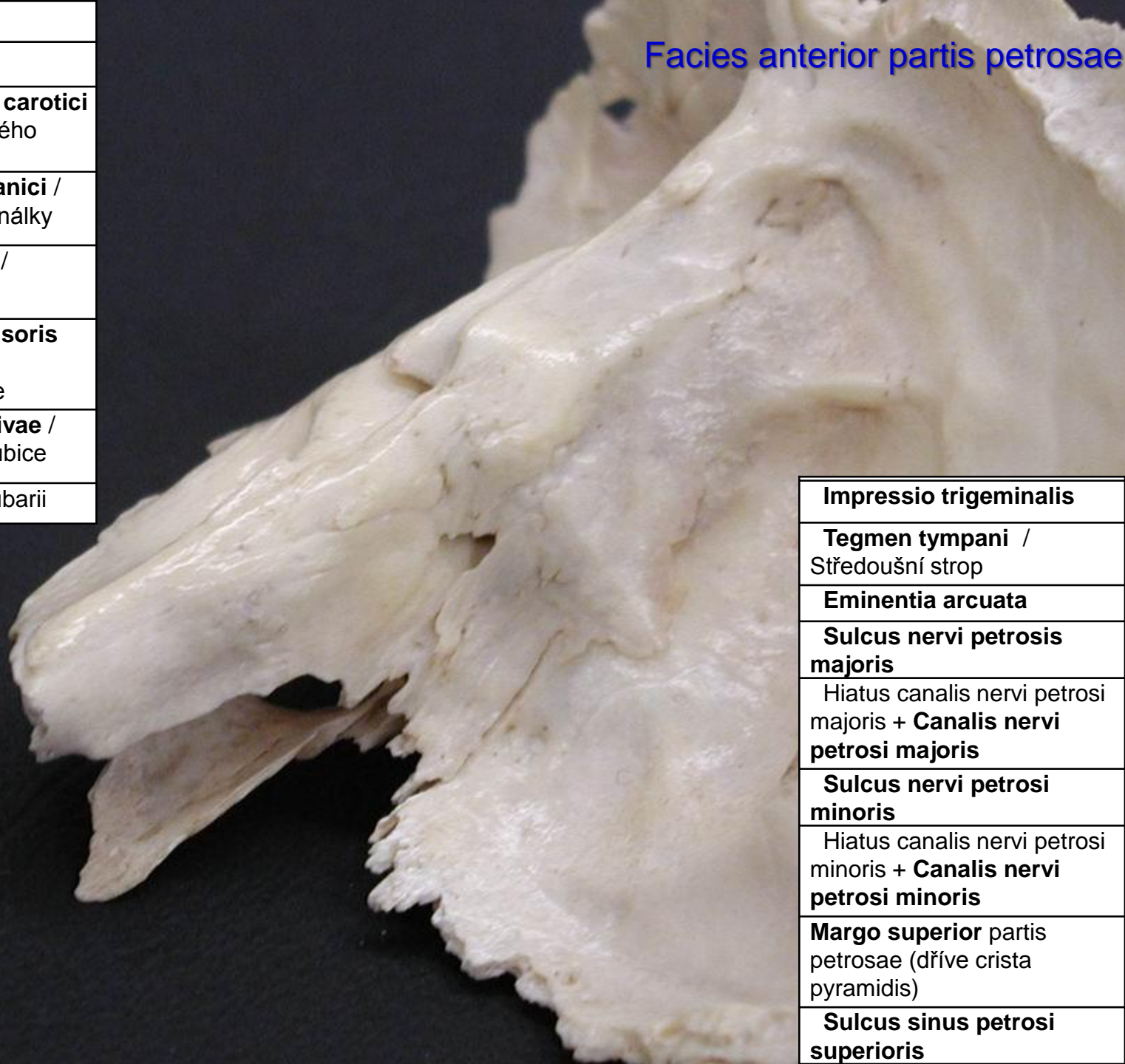


Figure IX-10 Lesser petrosal nerve (parasympathetic motor IX) and greater petrosal nerve (parasympathetic motor VII) and surrounding structures (sagittal section through the jugular foramen showing cut petrous temporal bone).

Apex partis petrosae
Canalis caroticus
Apertura interna canalis carotici / Vnitřní ústí krkavického kanálu
Canaliculi caroticotympanici / Krkavicobubínkové kanálky
Canalis musculotubarius / Svalotrubicový kanál
Semicanalis muscoli tensoris tympani / Polokanál bubínkového napínače
Semicanalis tubae auditivae / Polokanál sluchové trubice
Septum canalis musculotubarii

Facies anterior partis petrosae



Impressio trigeminalis
Tegmen tympani / Středoušní strop
Eminentia arcuata
Sulcus nervi petrosi majoris Hiatus canalis nervi petrosi majoris + Canalis nervi petrosi majoris
Sulcus nervi petrosi minoris Hiatus canalis nervi petrosi minoris + Canalis nervi petrosi minoris
Margo superior partis petrosae (dříve crista pyramidis)
Sulcus sinus petrosi superioris

Facies anterior partis petrosae

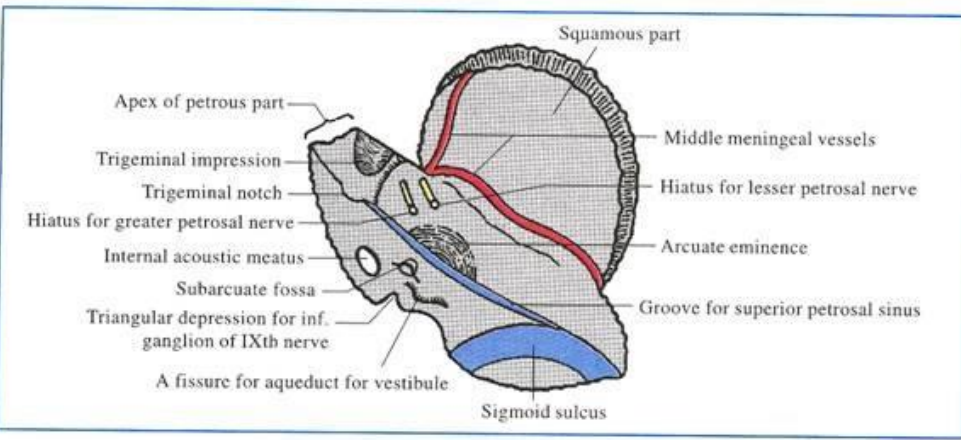
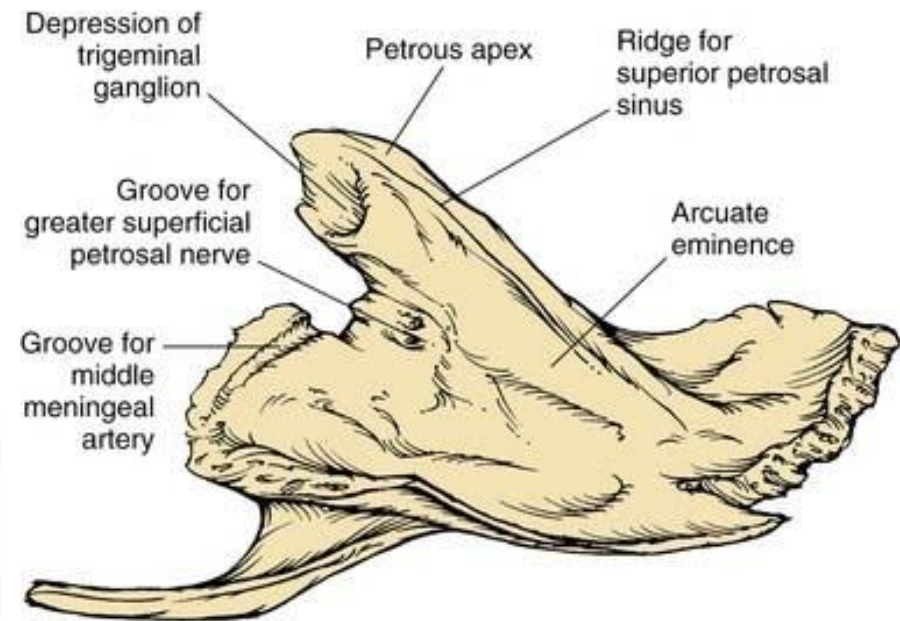


Fig. 1.14. Right temporal bone (Viewed from above).

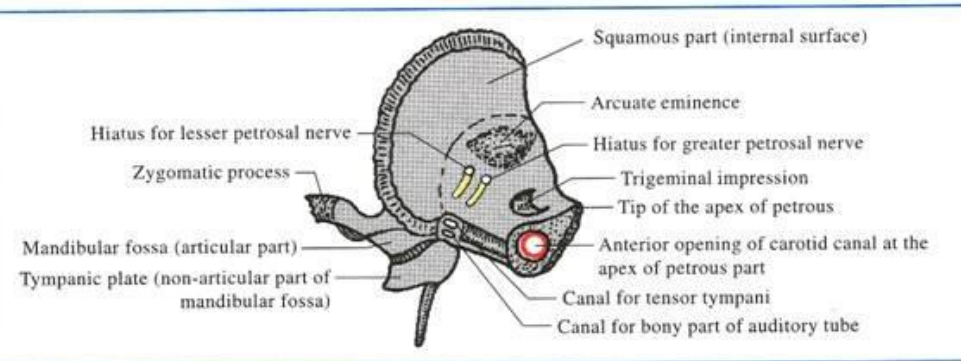
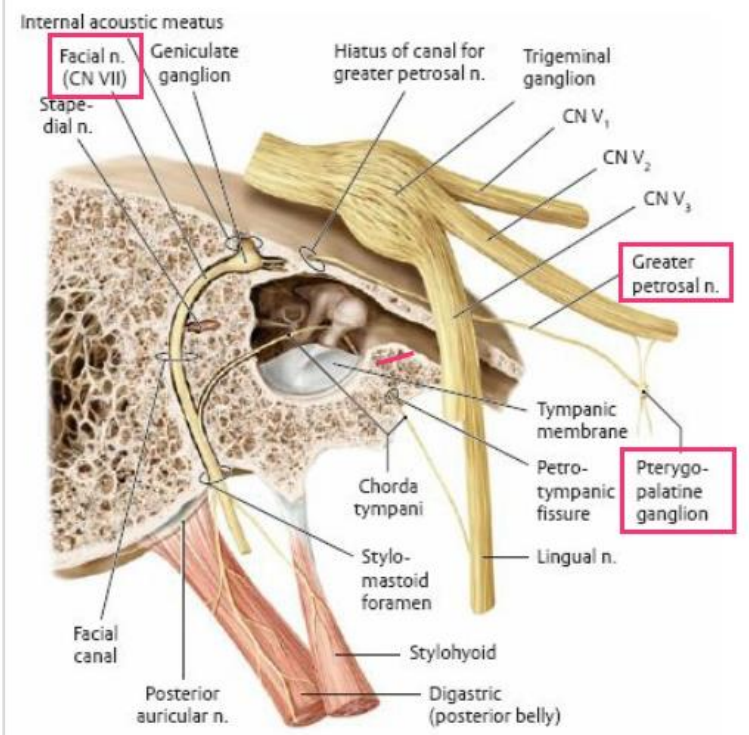


Fig. 1.16. Right temporal bone (Viewed from the front).

Facies posterior partis petrosae

Facies posterior partis petrosae

Porus acusticus internus / Vstup vnitřního zvukovodu

Meatus acusticus internus / Vnitřní zvukovod

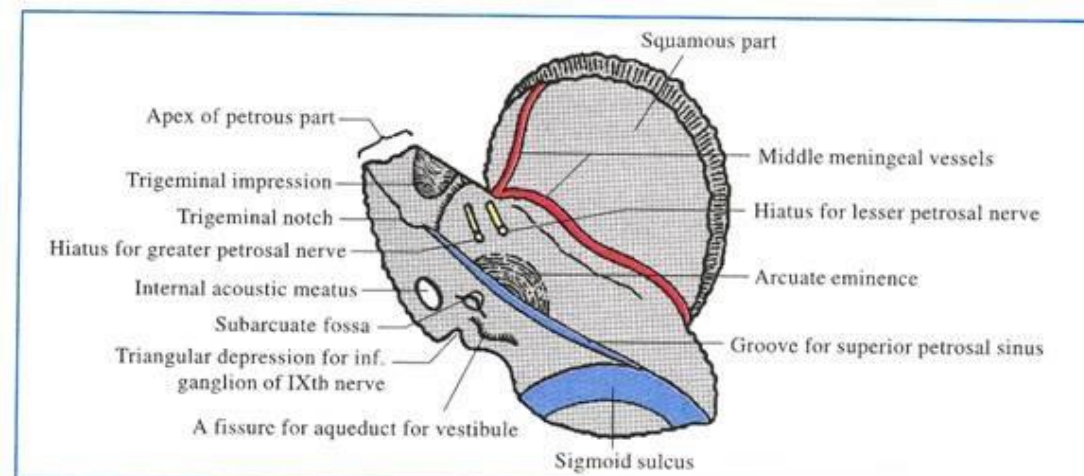
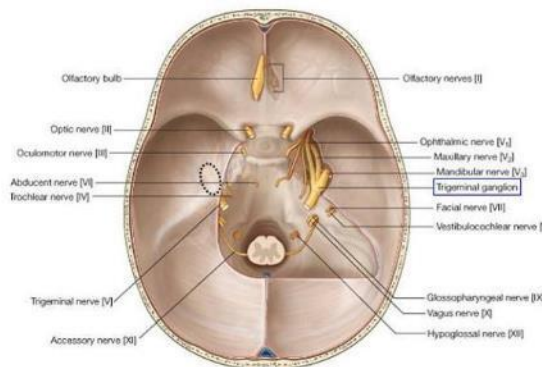
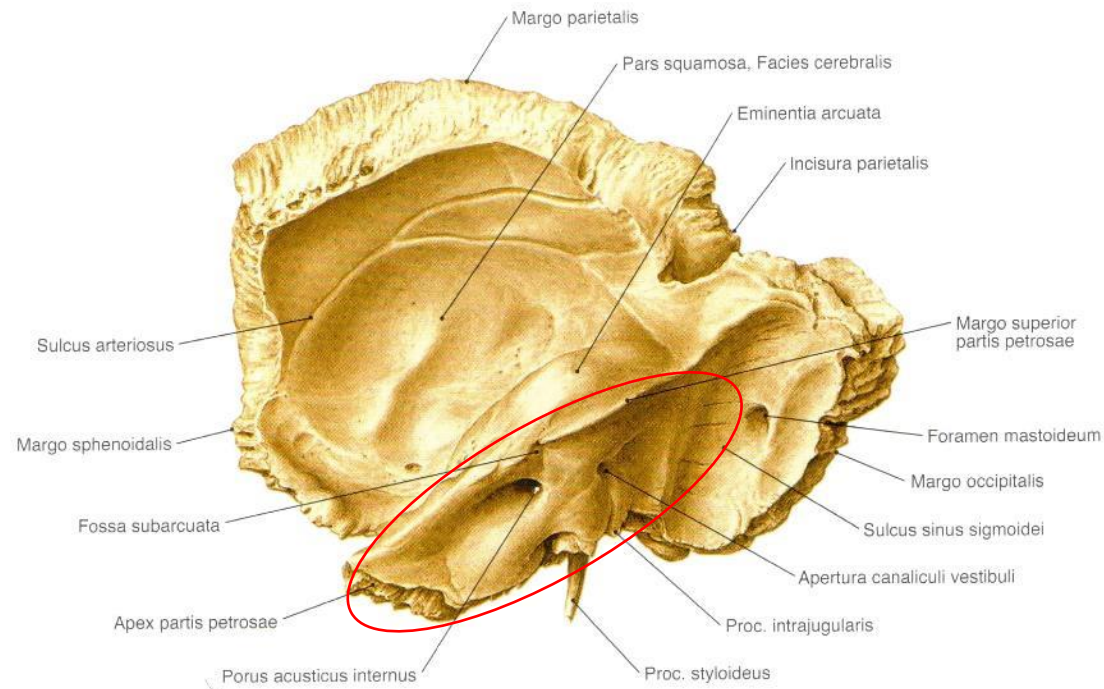
Fossa subarcuata

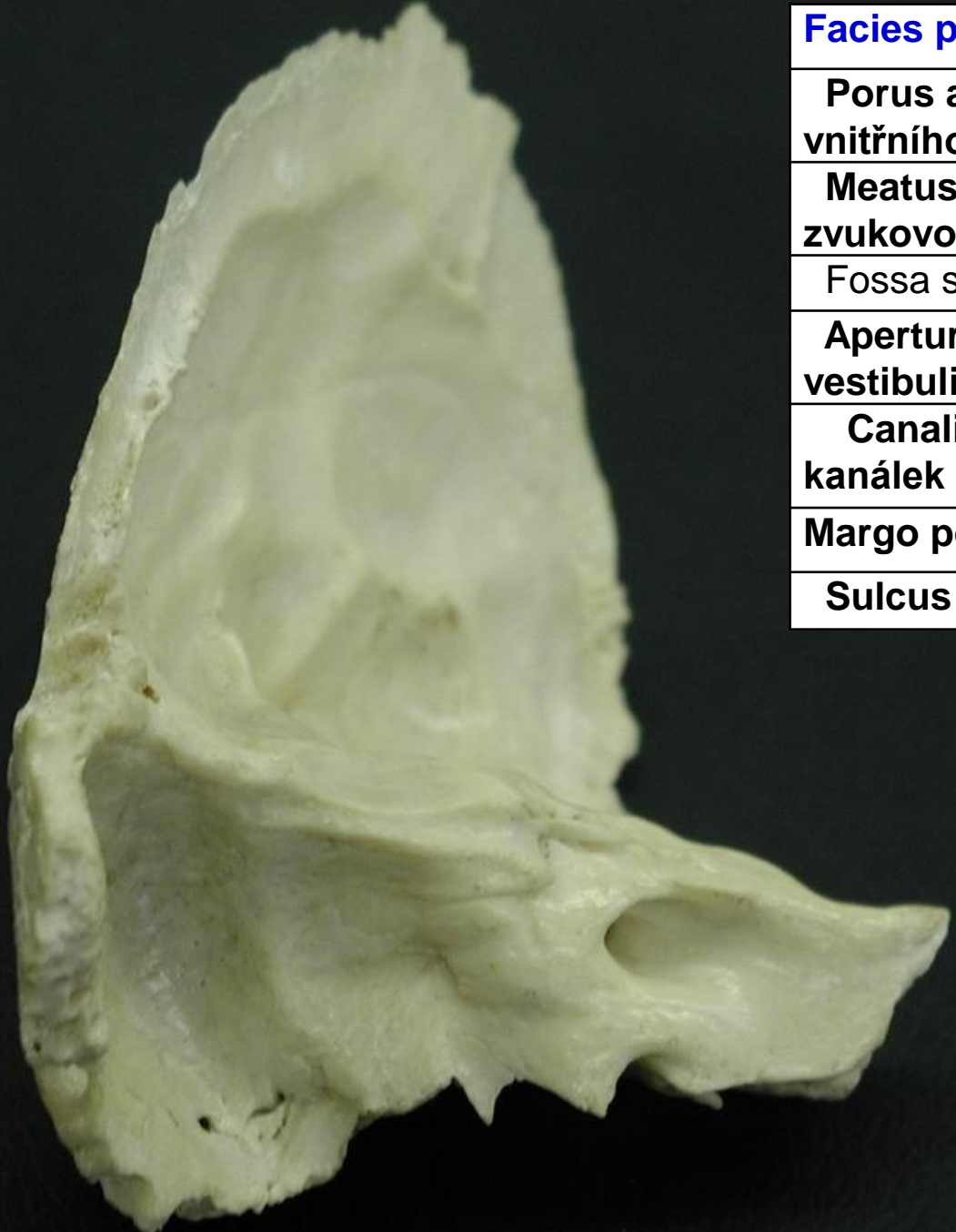
Apertura externa canaliculi vestibuli

Canaliculus vestibuli / Předšíňový kanálek

Margo posterior partis petrosae

Sulcus sinus petrosi inferioris





Facies posterior partis petrosae

**Porus acusticus internus / Vstup
vnitřního zvukovodu**

**Meatus acusticus internus / Vnitřní
zvukovod**

Fossa subarcuata

**Apertura externa canaliculi
vestibuli**

**Canaliculus vestibuli / Předšíňový
kanálek**

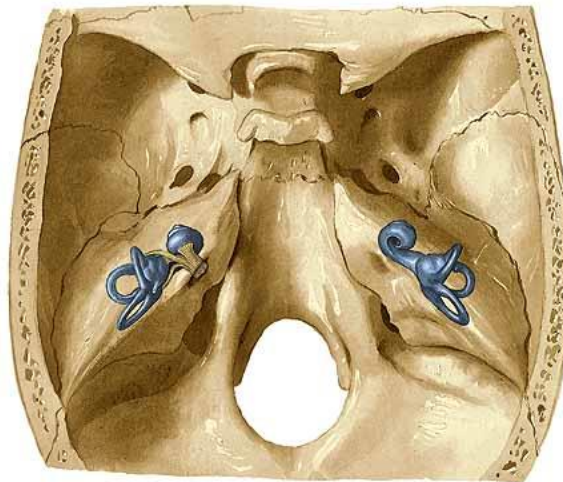
Margo posterior partis petrosae

Sulcus sinus petrosi inferioris

Vnitřní ucho

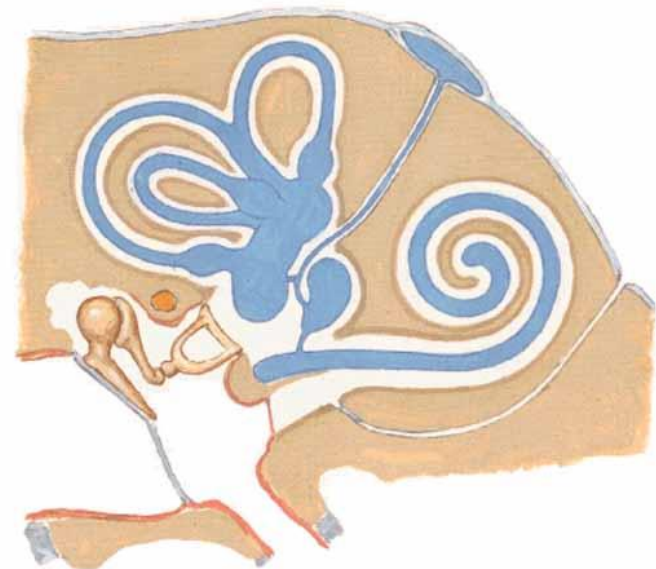
Kostěný labyrint *Labyrinthus osseus*

- vestibulum (předsíň)
- canalis semicircularis anterior, lateralis, posterior = polokruhové kanálky
 - ampulla + crus
- cochlea (kostěný hlemýžď)



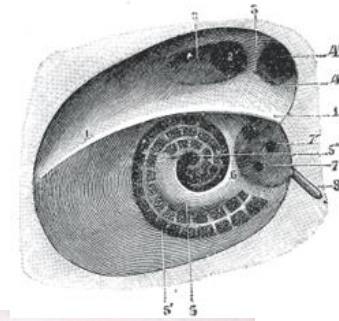
Blaný labyrint *Labyrinthus membranaceus*

- utriculus (míšek) – *vodorovný pohyb*
- sacculus (sáček) – *svislý pohyb*
- ductus semicircularis anterior, lateralis, posterior = polokruhové chodbičky – *úhlové zrychlení*
 - ampulla + crus
- ductus cochlea (blaný hlemýžď) – *sluch*

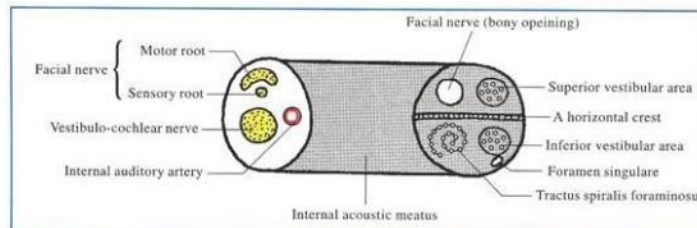
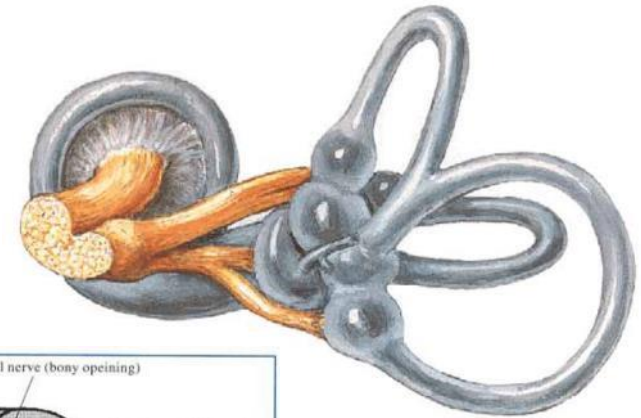
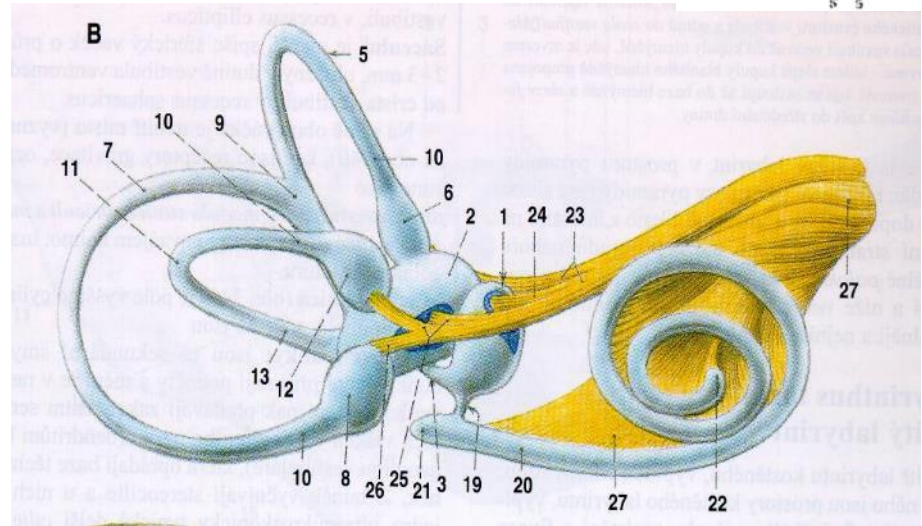


Meatus acusticus internus

Vnitřní zvukovod

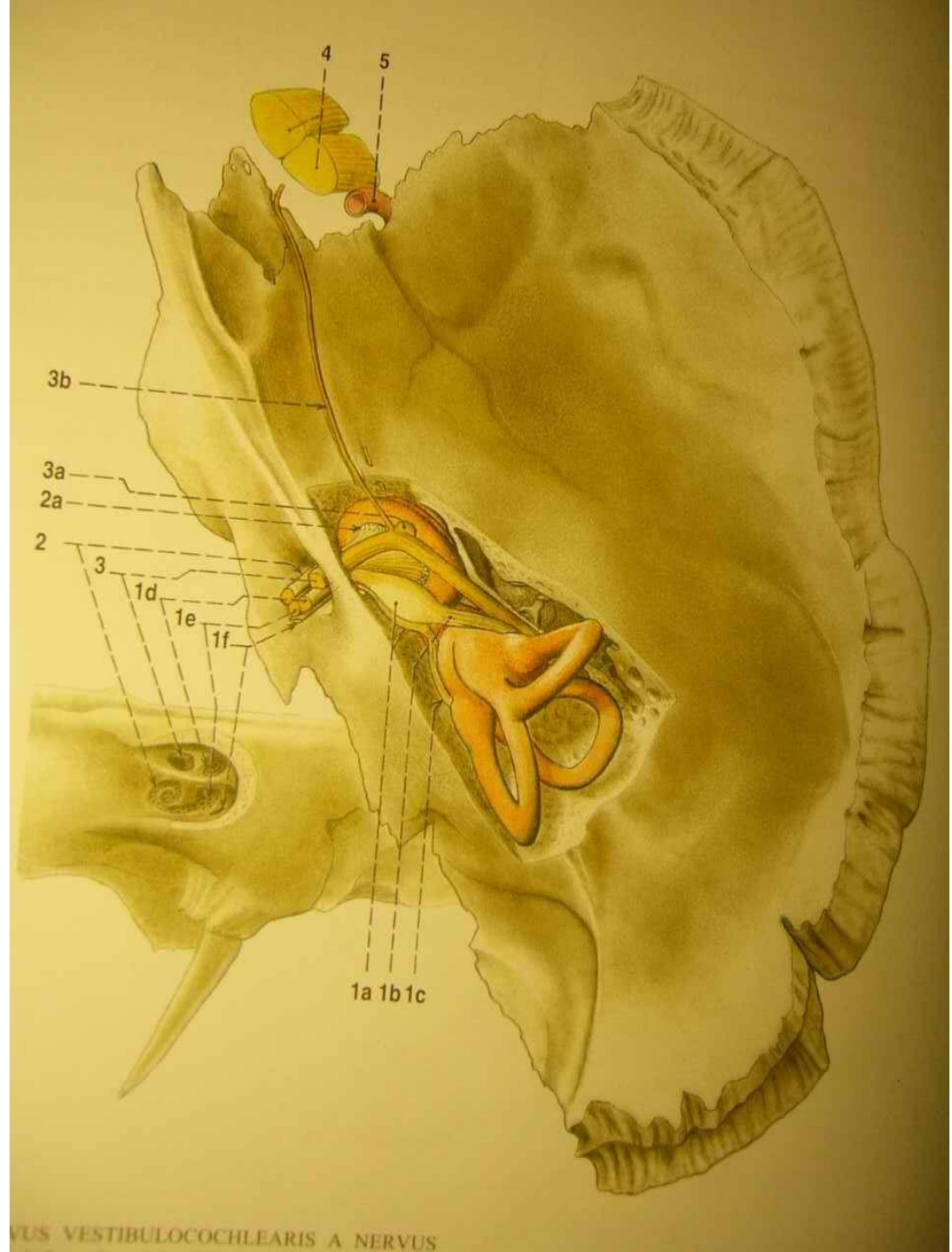


Porus acusticus internus / Vstup vnitřního zvukovodu
Meatus acusticus internus / Vnitřní zvukovod
Fundus meatus acustici interni / Dno vnitřního zvukovodu
Crista transversa
Crista verticalis
Area nervi facialis / Políčko lícního nervu
Area vestibularis superior / Horní předsíňové políčko
Area vestibularis inferior
Foramen singulare / Osamělý otvor
Area cochlearis / Hlemýžďové políčko
Tractus spiralis foraminosus / Dírkovaná spirála

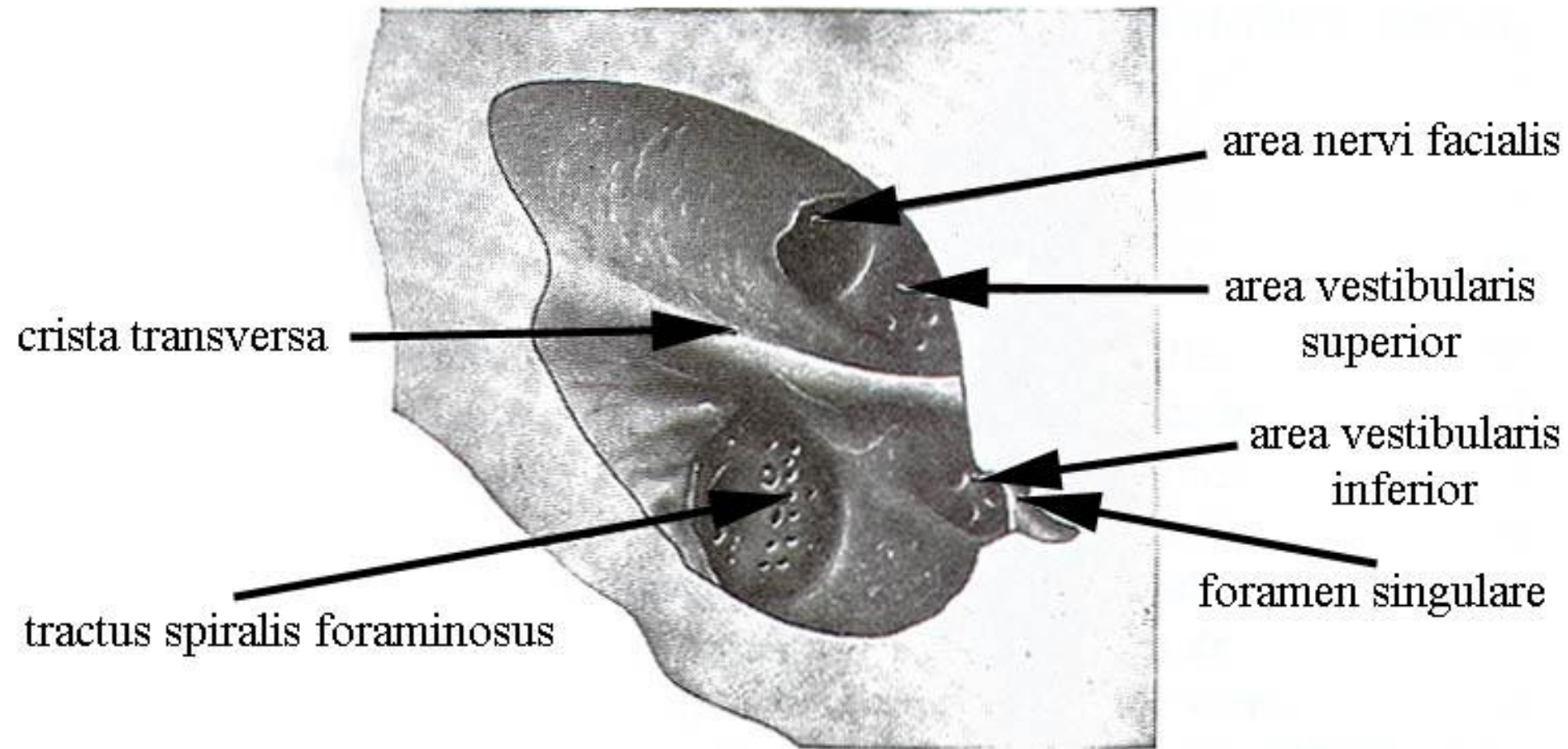


Meatus acusticus internus

Vnitřní zvukovod



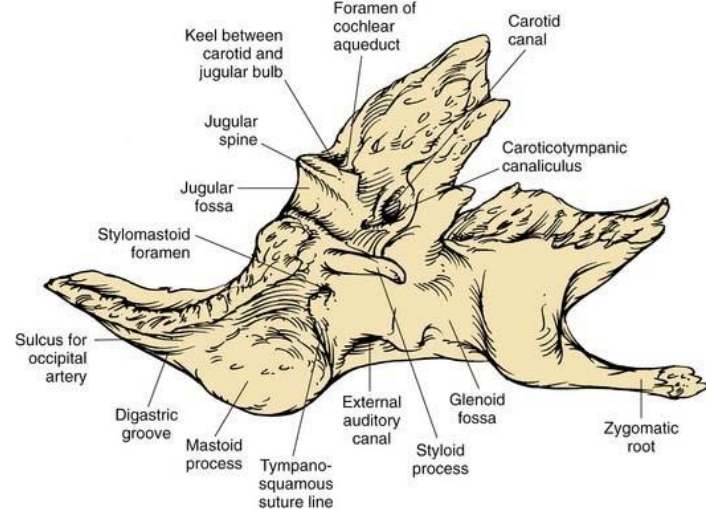
MEATUS ACUSTICUS INTERNUS (fundus meatus acustici interni)





Meatus acusticus internus
Vnitřní zvukovod

Facies inferior partis petrosae



Apertura externa canalis carotici

Fossa jugularis

Processus intrajugularis

Canaliculus mastoideus *Arnoldi*

Fossula petrosa

Canaliculus tympanicus *Jacobsoni*

Apertura externa canaliculi cochleae

Canaliculus cochlae / Hlemýžďový kanálek

Processus styloideus / Bodcovitý výběžek

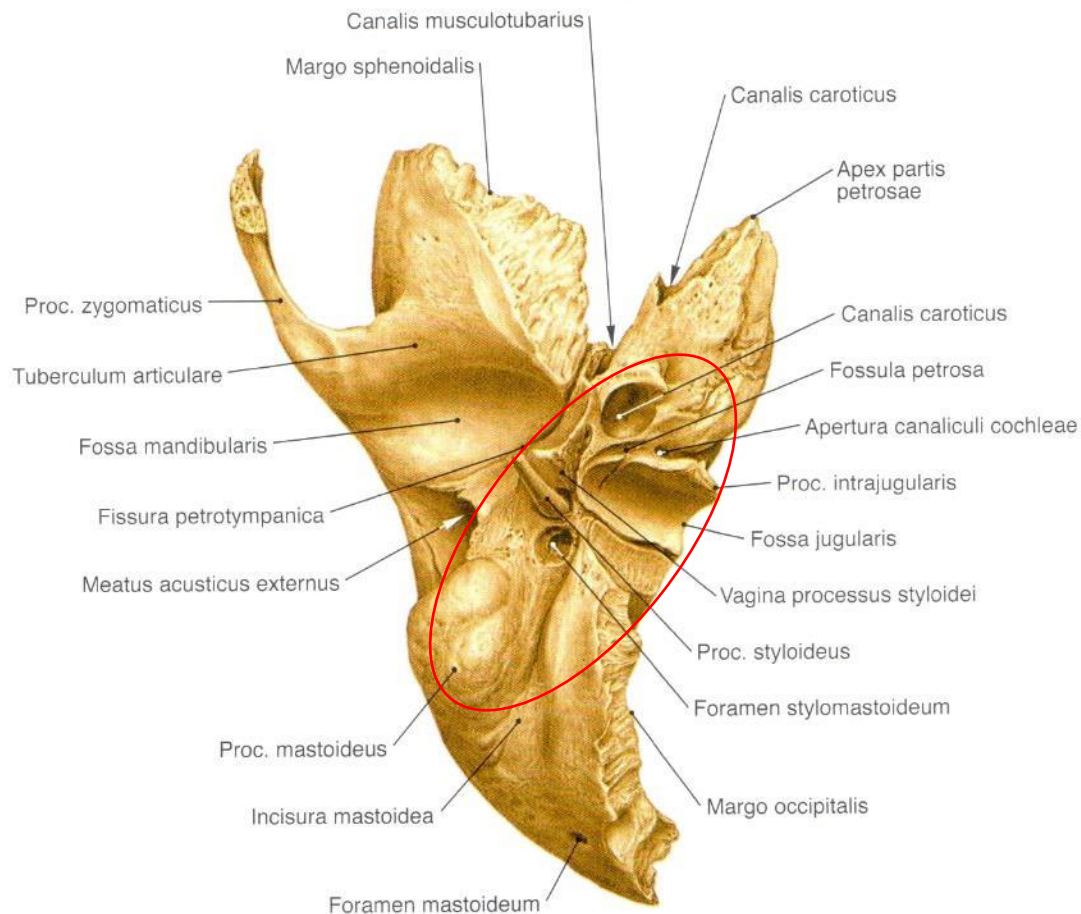
Foramen stylomastoideum / Bodcoscovitý otvor

Processus mastoideus / Soscovitý výběžek

Sulcus sinus sigmoidei

Sulcus arteriae occipitalis

Foramen mastoideum



**Facies inferior
partis petrosae**

Processus intrajugularis

Canaliculus mastoideus *Arnoldi*

Fossula petrosa

Canaliculus tympanicus *Jacobsoni*

Apertura externa canaliculi cochleae

Canaliculus cochlae / Hlemýžďový kanálek

Processus styloideus / Bodcovitý výběžek

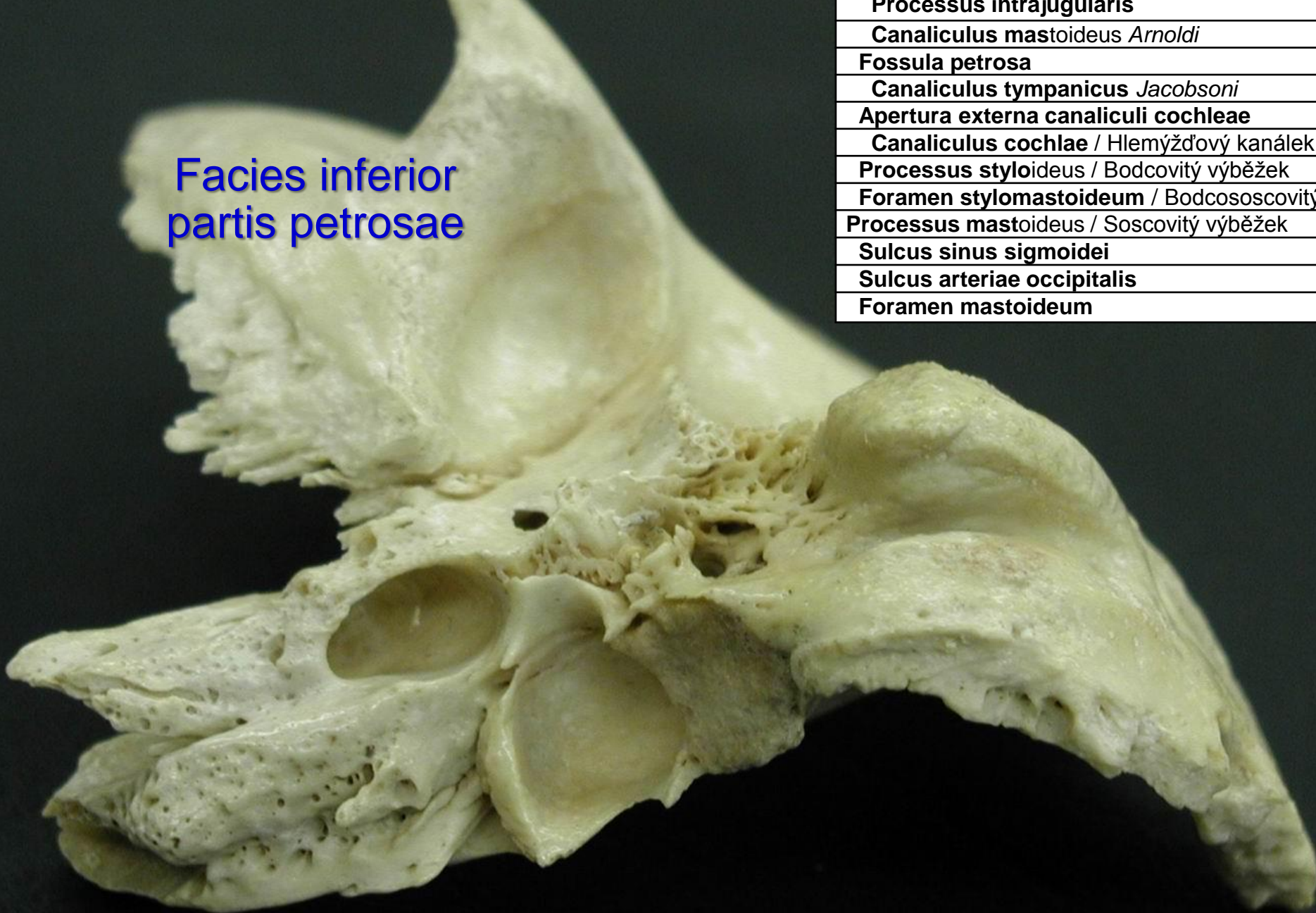
Foramen stylomastoideum / Bodcoscovitý

Processus mastoideus / Soscovitý výběžek

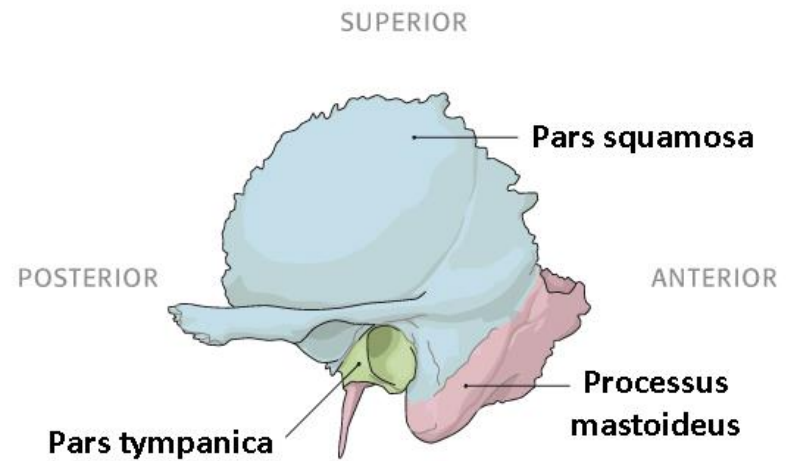
Sulcus sinus sigmoidei

Sulcus arteriae occipitalis

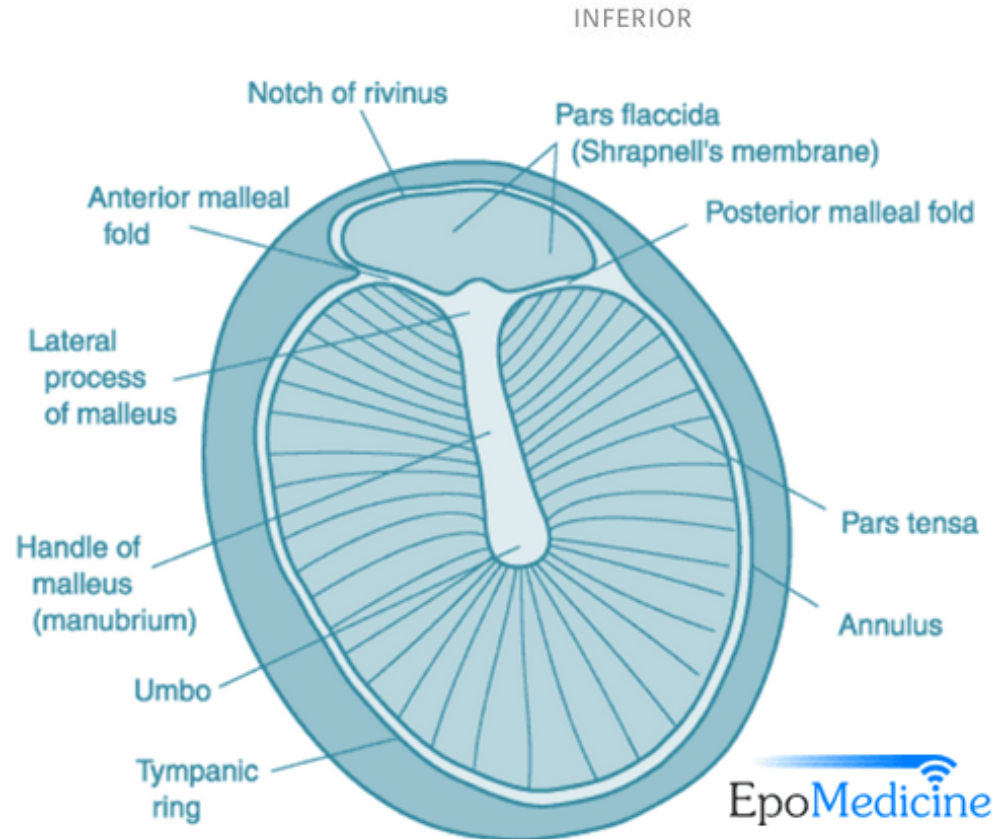
Foramen mastoideum



Pars tympanica ossis temporalis



Anulus tympanicus / Bubínkový prsteneč
Porus acusticus externus
Meatus acusticus externus
Sulcus tympanicus
Incisura tympanica Rivini
Spina tympanica major et minor



Pars squamosa ossis temporalis

Facies temporalis

Facies cerebralis

Sulcus arteriae temporalis mediae

Processus zygomaticus

Crista supramastoidea

Foveola suprameatica s.

Trigonum Maceweni /
Nadzvukovodová jamka

Spina suprameatica *Henlei*

Fossa mandibularis

Facies articularis

Tuberculum articulare

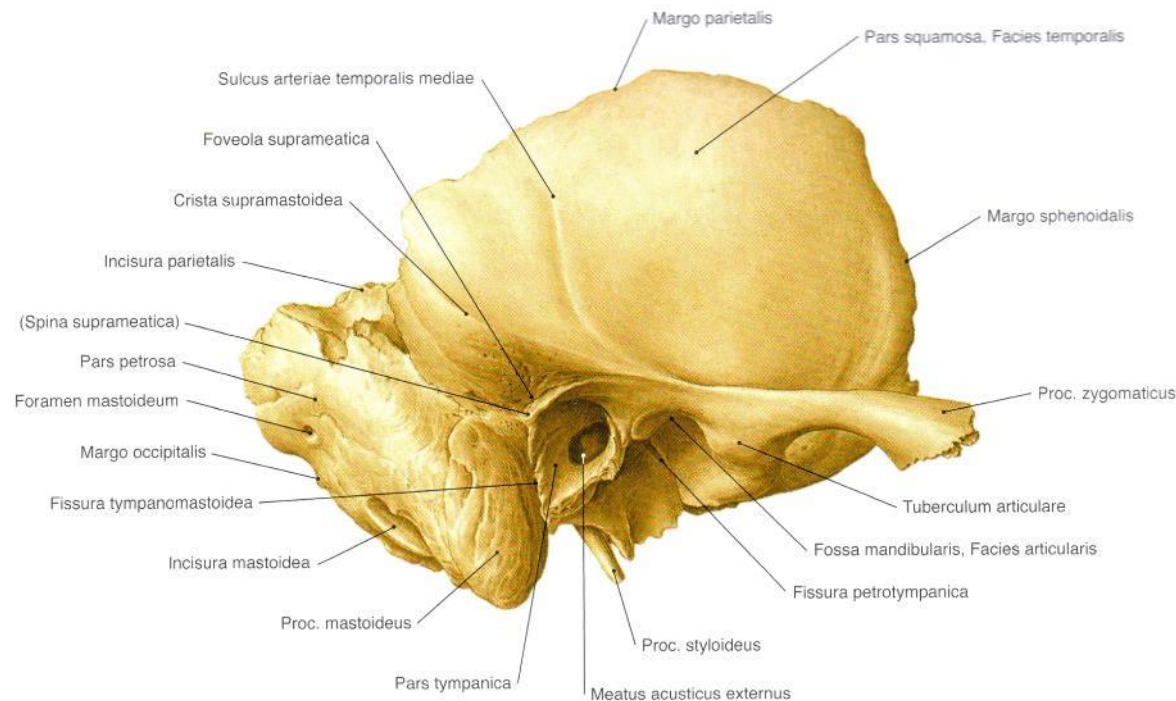
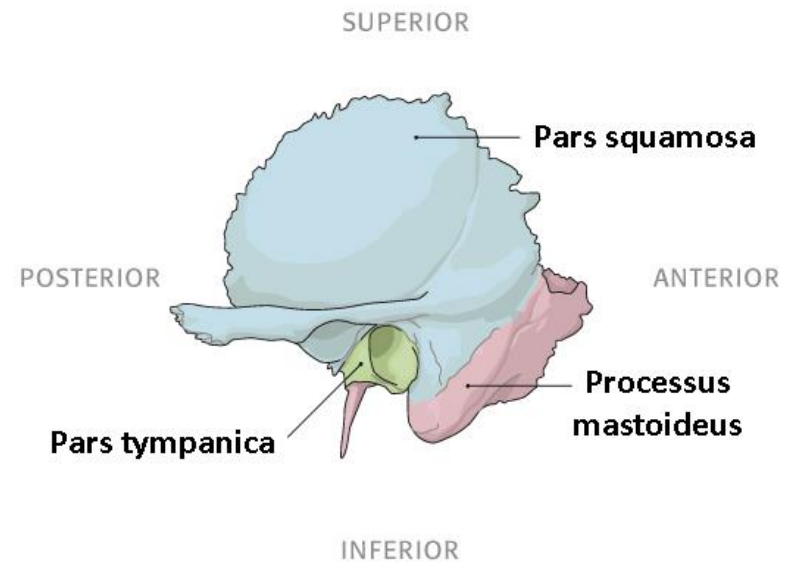
Fissura petrotympanica *Glaseri*

Canaliculus chordae tympani
anterior *Huguieri s. Civinini*

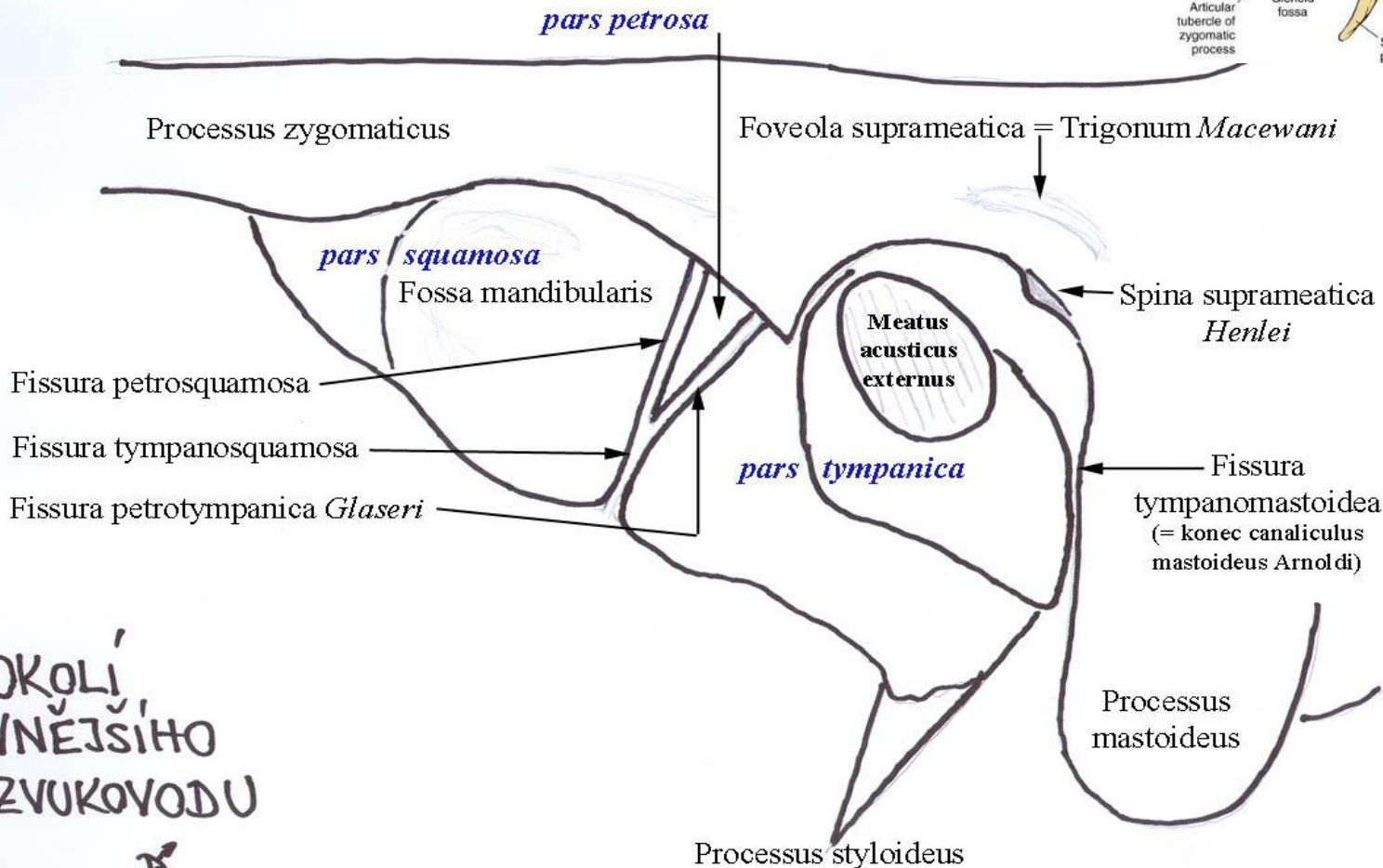
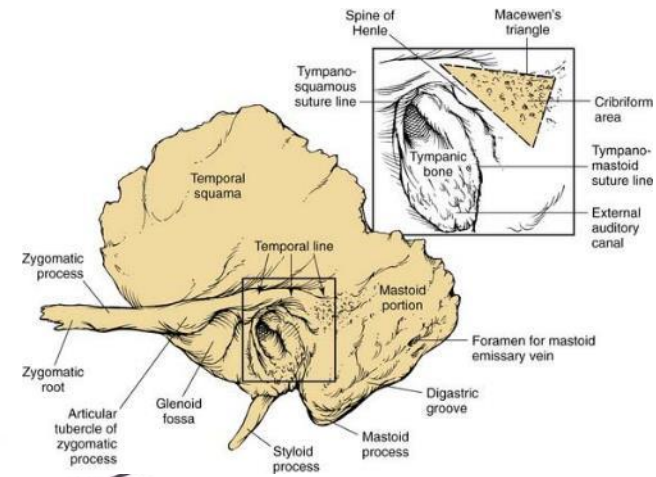
Fissura petrosquamosa

Fissura tympanosquamosa

Fissura tympanomastoidea ←
Canaliculus mastoideus *Arnoldi*



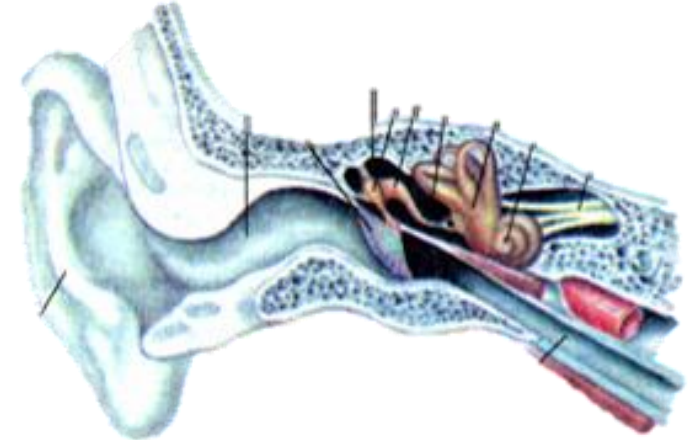
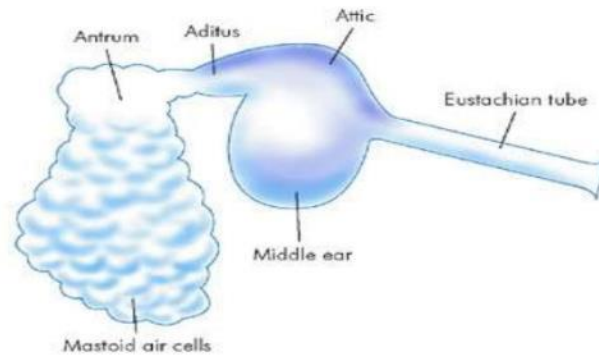
Pars squamosa ossis temporalis



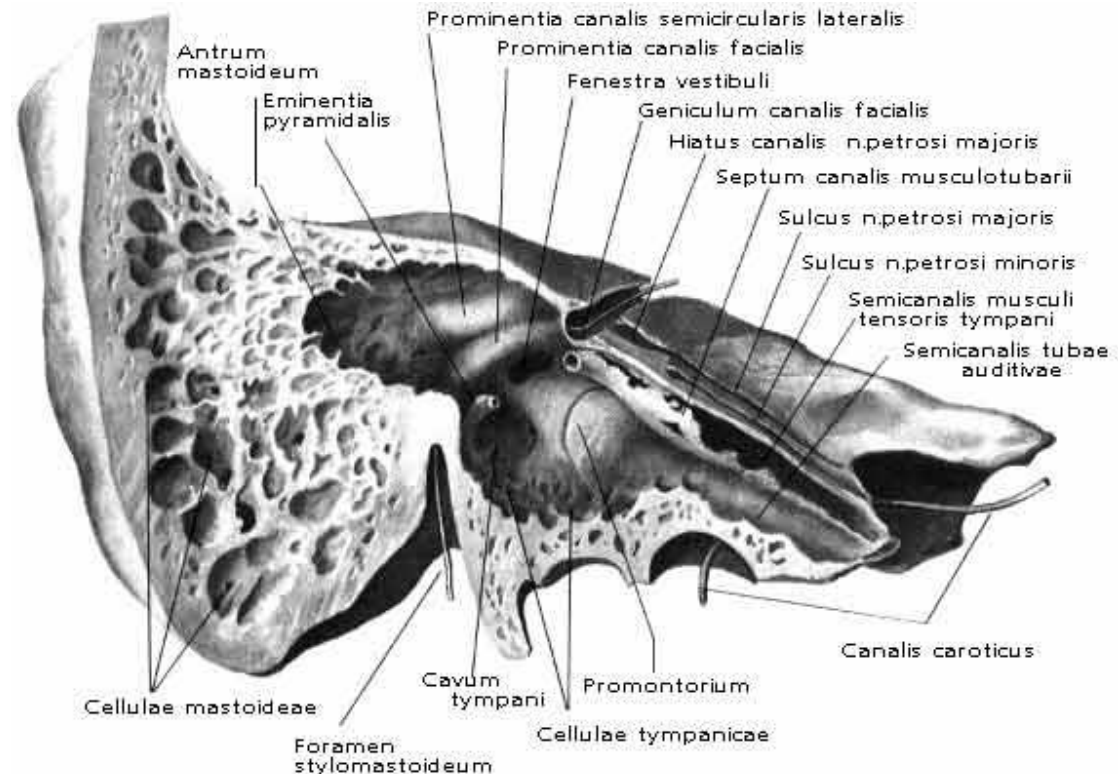
OKOLI
VNEJSIHO
ZVUKOVODU



Středoušní dutina



- středoušní dutina
 - bubínková dutina (cavitas tympani)
 - sluchové kůstky (*ossicula auditus*)
 - antrum mastoideum + cellulae mastoideae
 - sluchová trubice (tuba auditiva *Eustachii*)



Cavitas tympani (Bubínková dutina)

Stěny

Paries tegmentalis / Strop

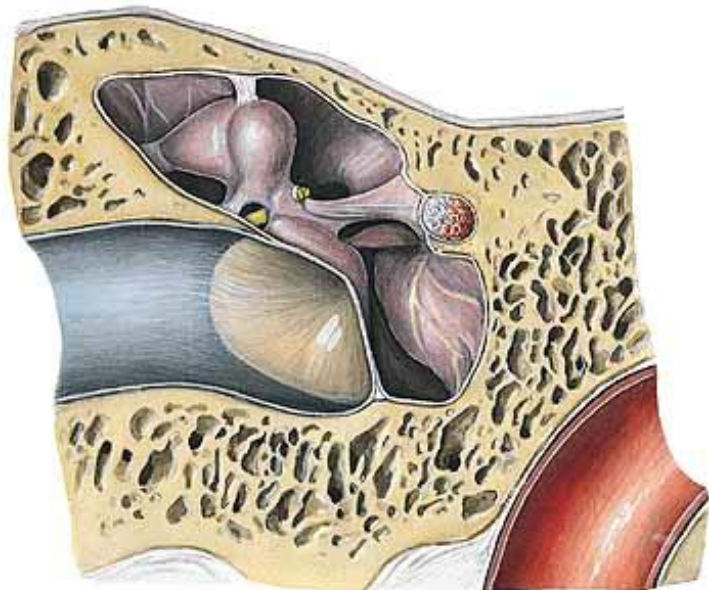
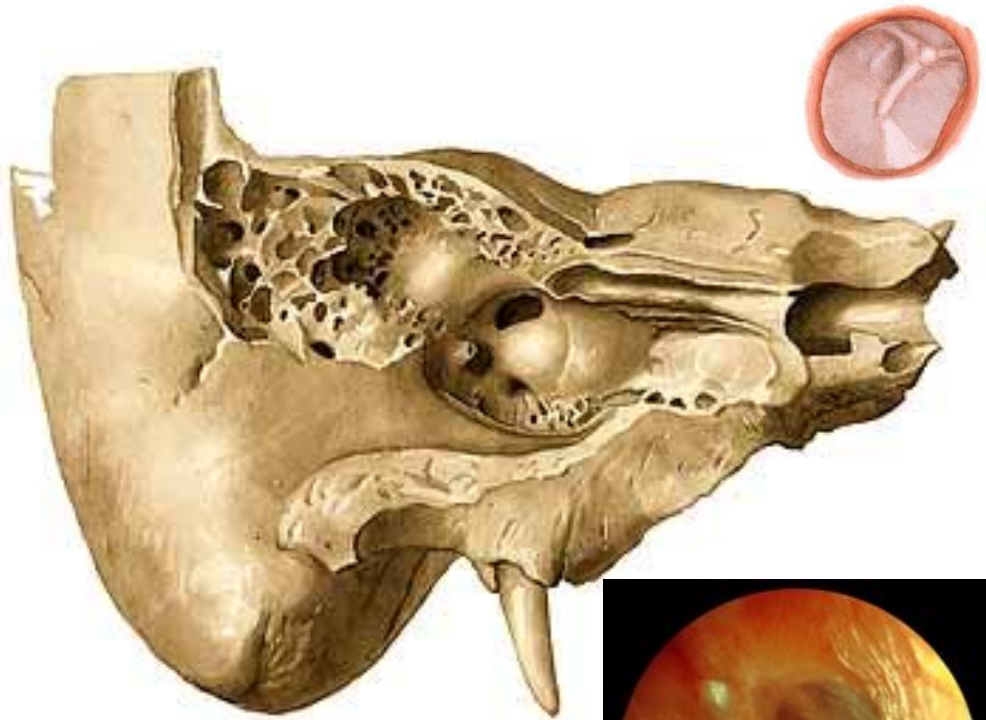
Paries jugularis / Dno

Paries labyrinthicus (dříve Facies ventrobasalis partis petrosae) / Labyrintová stěna – vnitřní stěna

Paries mastoideus / Zadní stěna

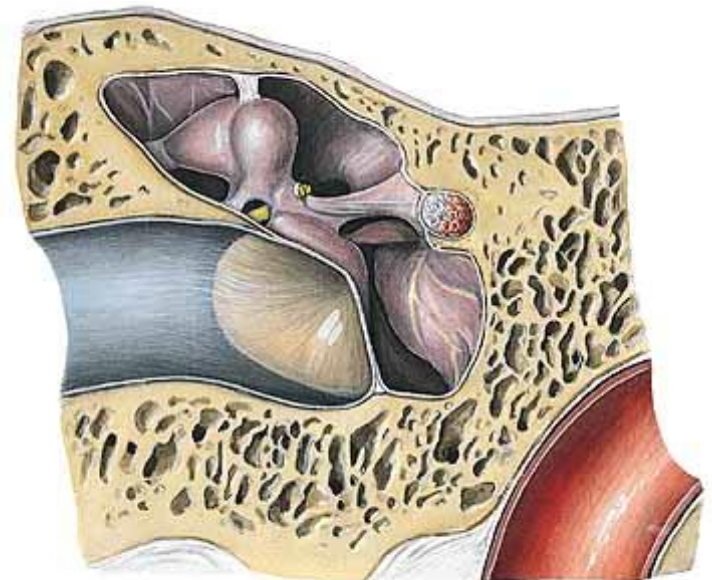
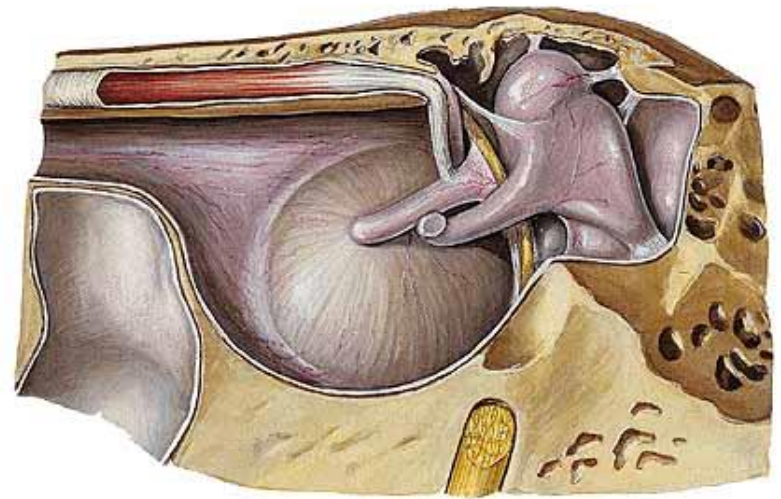
Paries caroticus / Přední stěna

Paries membranacea = Membrana tympanica (Bubínek) – vnější stěna



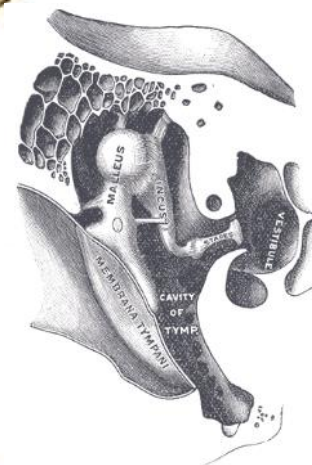
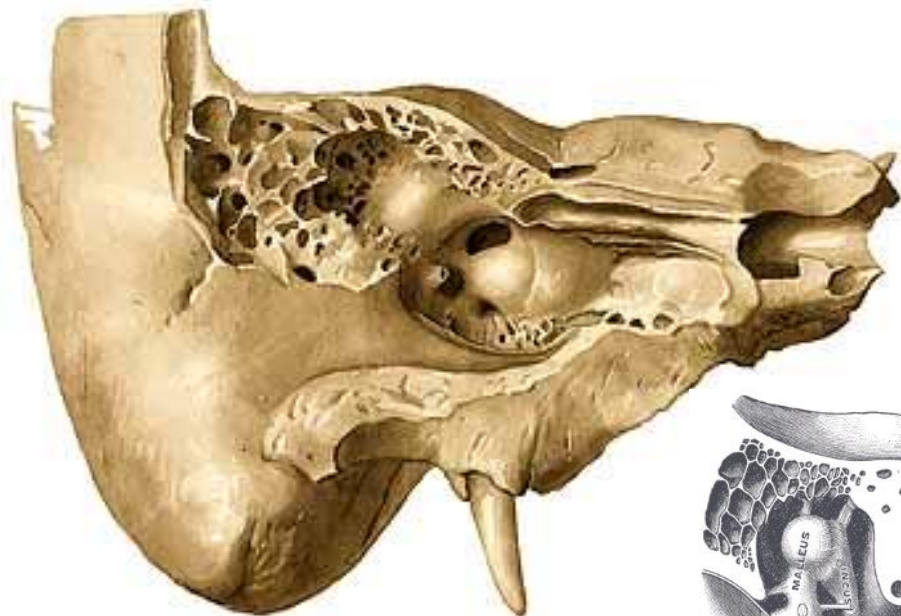
Cavitas tympani (Bubínková dutina)

- tvar přesýpacích hodin
 - 2 mm u bubínku (mesotympanon)
- recessus epitympanicus (atticus, epitympanon, epitympanum) – 6 mm
 - ossicula auditus (malleus, incus, stapes)
 - chorda tympani
- recessus hypotympanicus (hypotympanon) – 4 mm



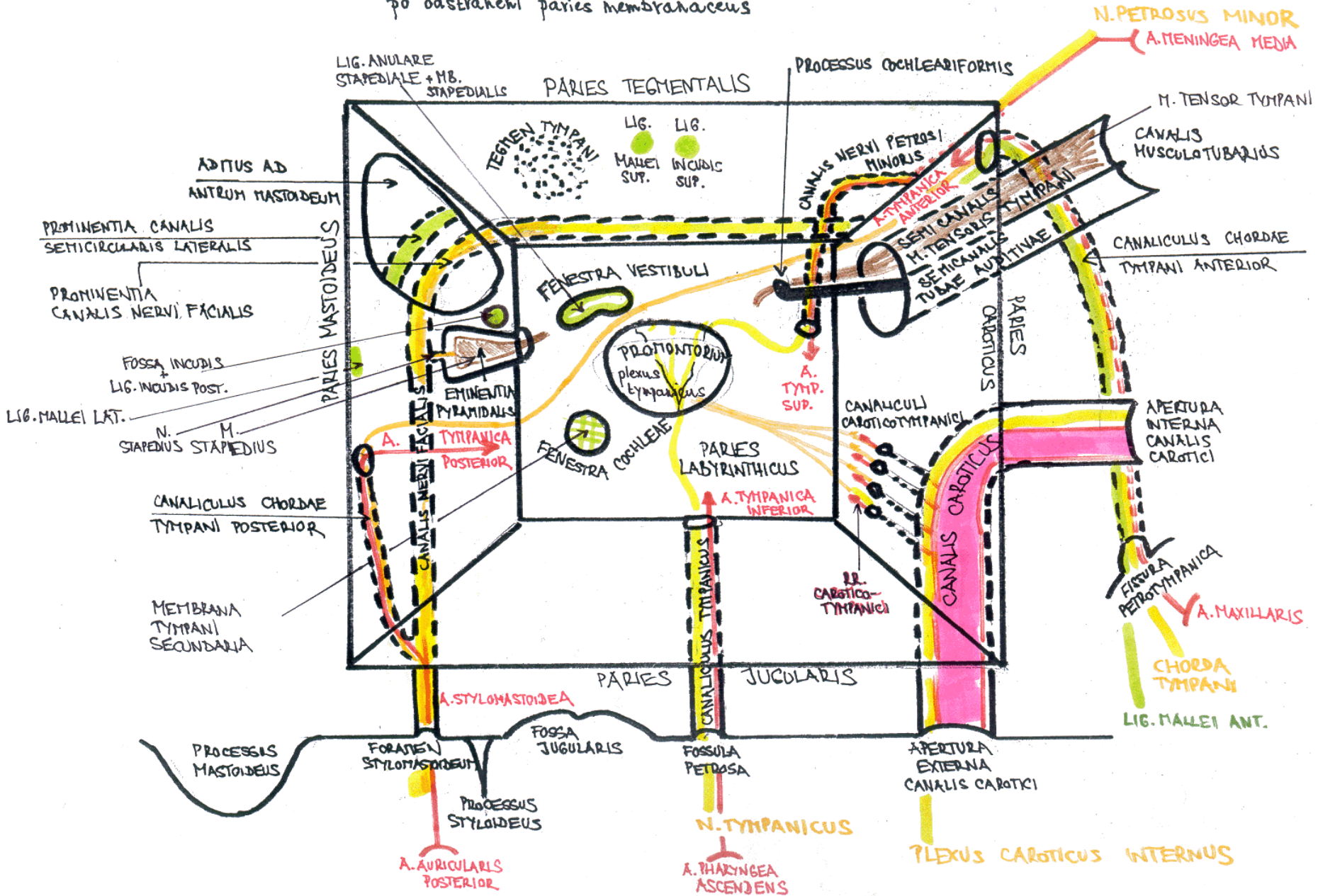
Cavitas tympani (Bubínková dutina)

Paries tegmentalis / Strop
Recessus epitympanicus (nebo atticus) / Nadbubínkový výklenek
Paries jugularis
Prominentia styloidea / Bodcovité vyvýšení
Paries labyrinthicus (dříve Facies ventrobasis partis petrosae) / Labyrintová stěna
Fenestra vestibuli (dříve Fenestra ovalis) / Předsíňové nebo Oválné okénko
Promontorium / Předhoří
Sulcus promontorii
Sinus tympani / Bubínková zátoka
Fenestra cochleae (dříve Fenestra rotunda) / Hlemýžďové nebo Okrouhlé okénko
Processus cochleariformis / Lžičkovitý výběžek
Paries mastoideus
Aditus ad antrum mastoideum / Dutinový vchod
Prominentia canalis semicircularis lateralis / Vyklenutí bočního polokruhovitého kanálku
Prominentia canalis nervi facialis
Eminentia pyramidalis / Jehlanová vyvýšenina
Fossa incudis / Kovadlinková jamka
Sinus posterior / Zadní zátoka
Paries caroticus
Canaliculi caroticotympanici
Canalis musculotubarius
Canaliculus chordae tympani anterior



CAVITAS TYMPANI

po odstranění l.d.x.
paries membranaceus



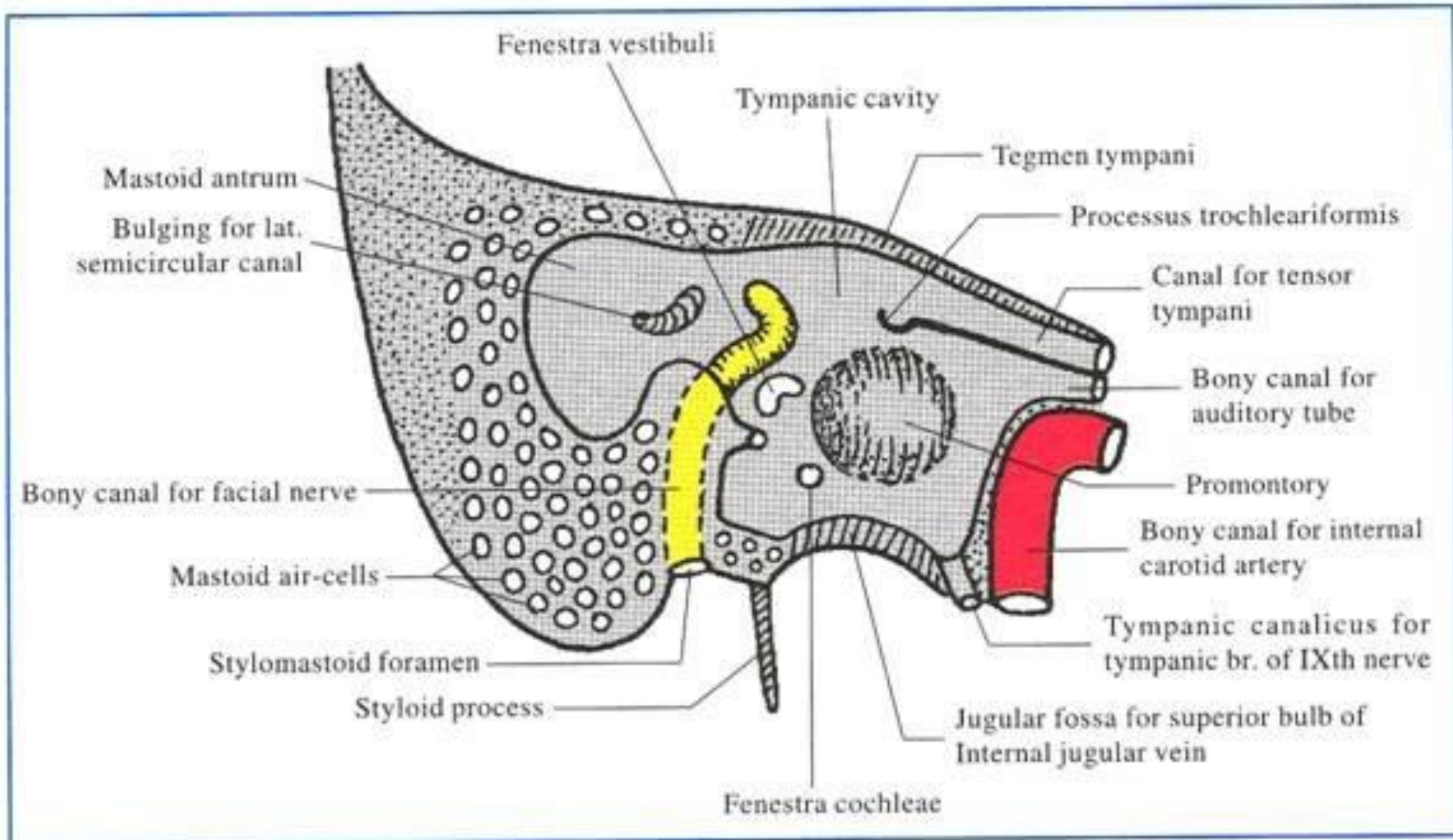
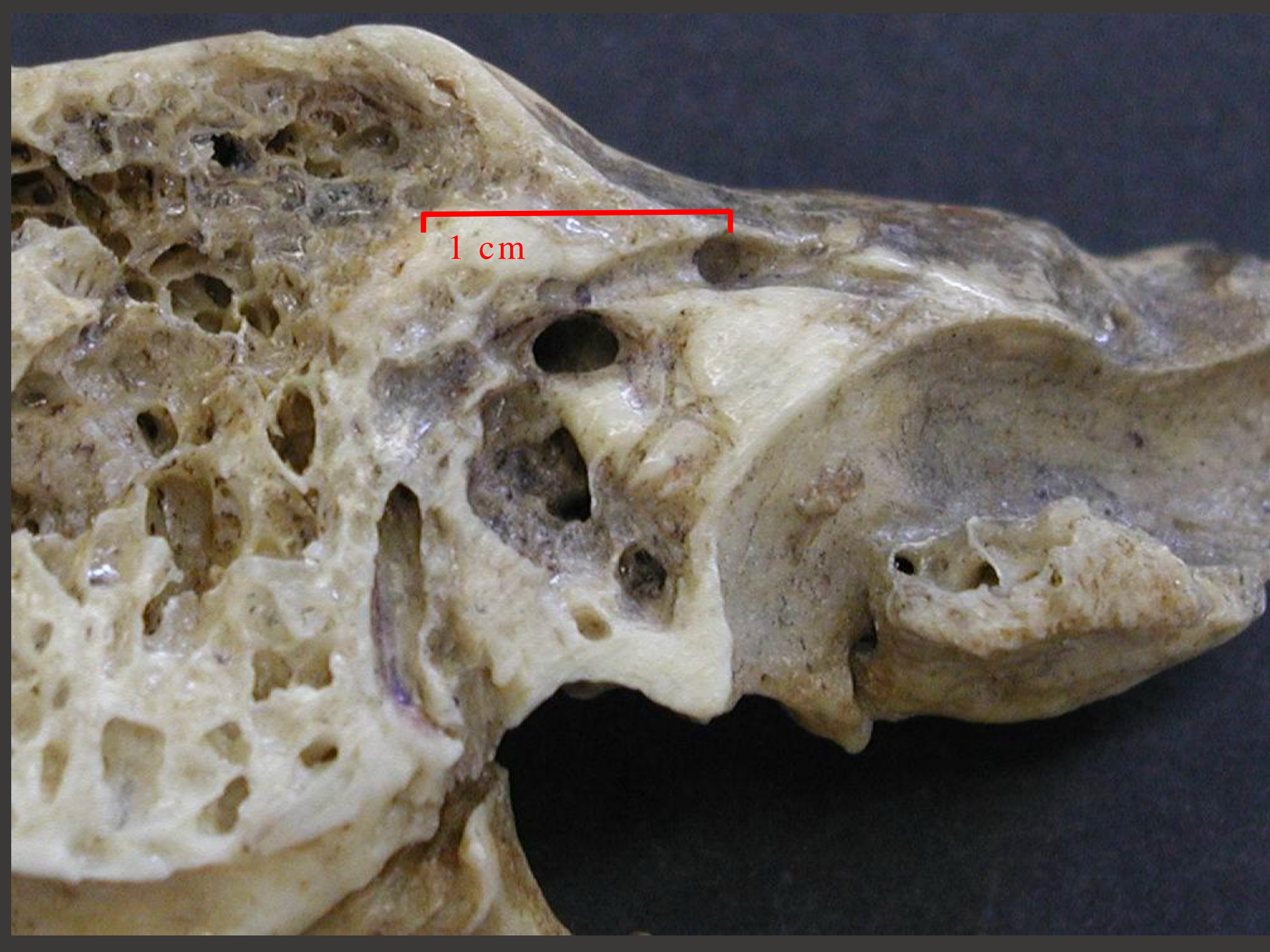


Fig. 1.18. A section through the tegmen tympani along the long axis of Petro-mastoid part of right temporal bone (Medial part of the section).



1 cm





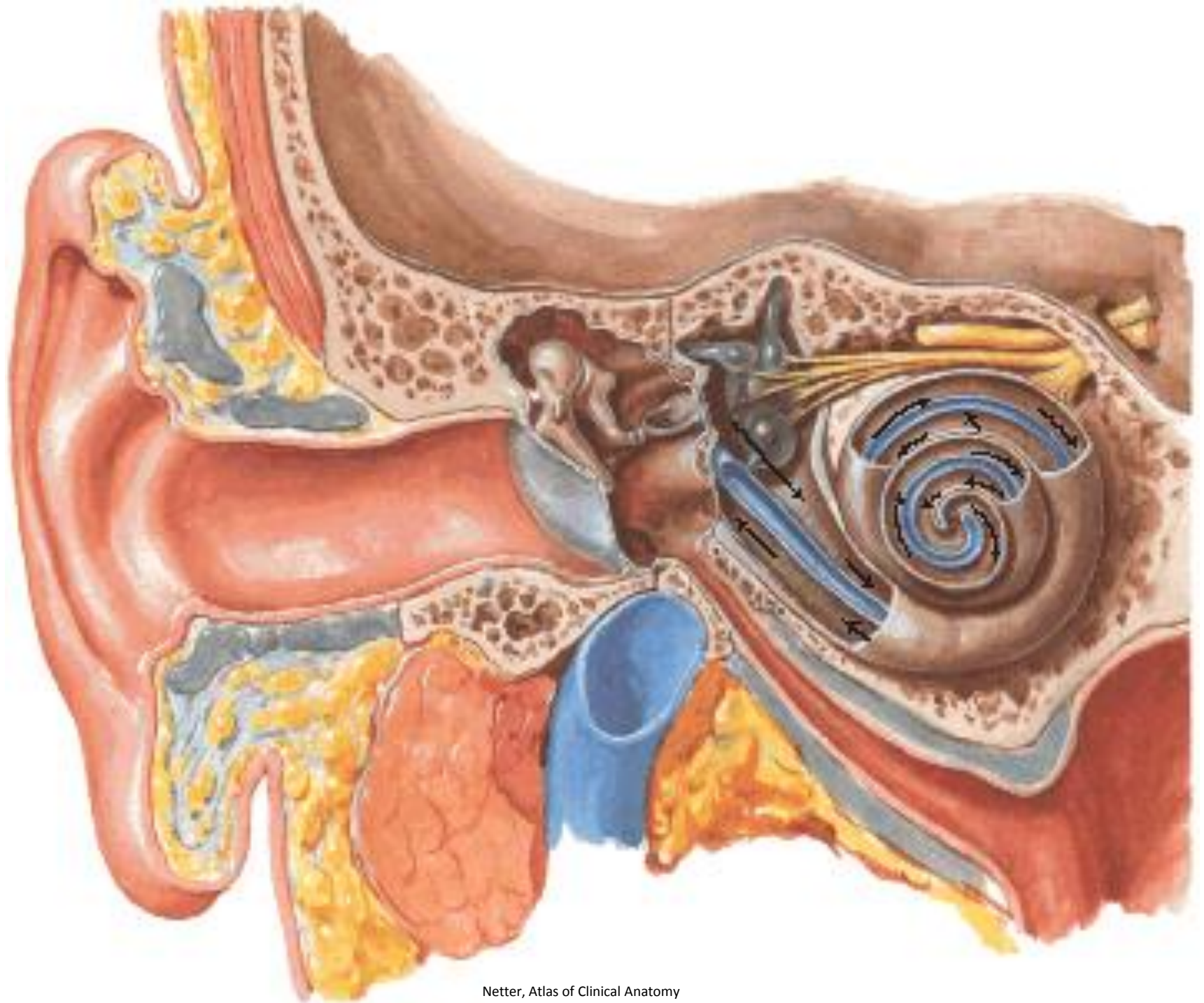
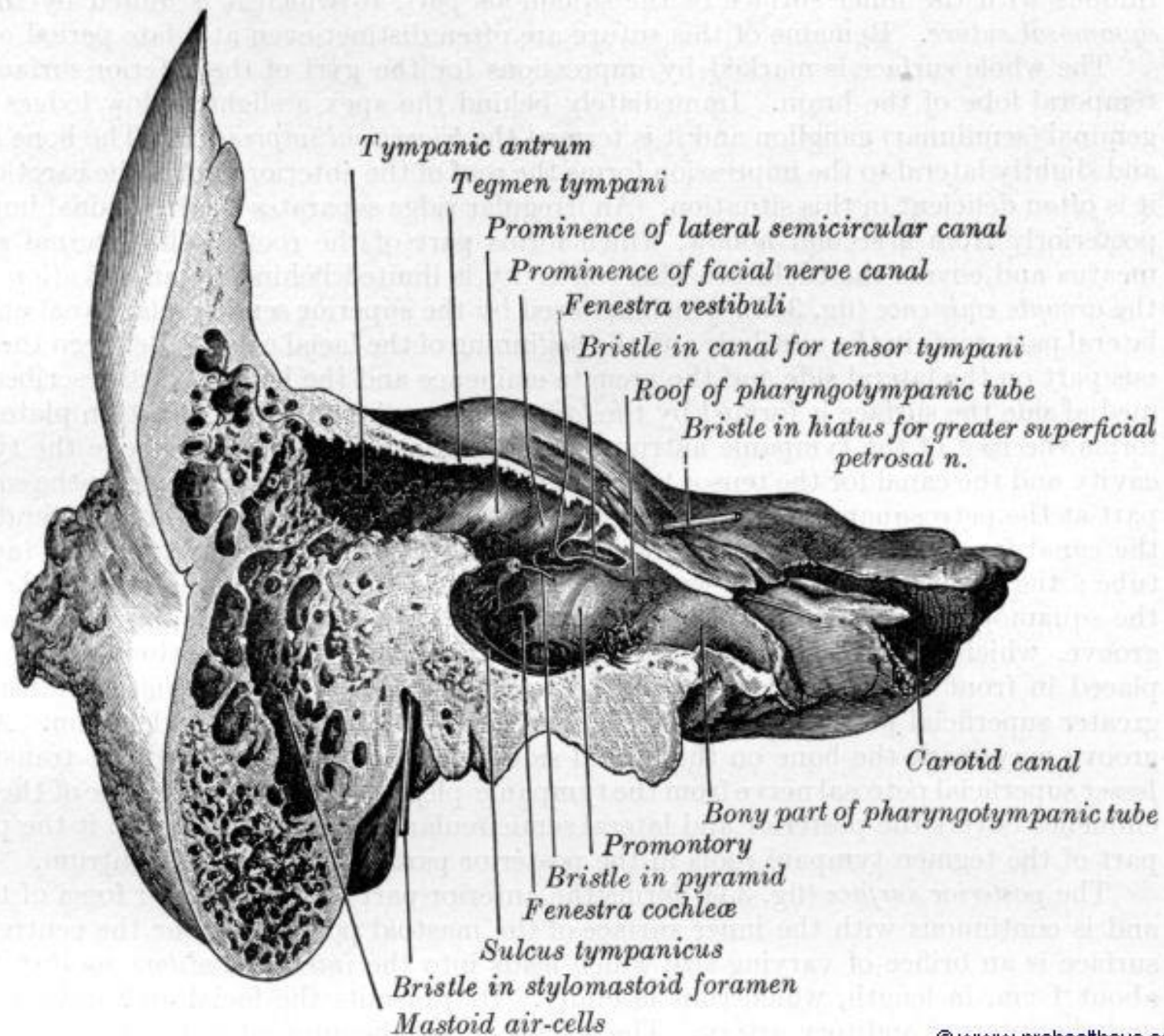
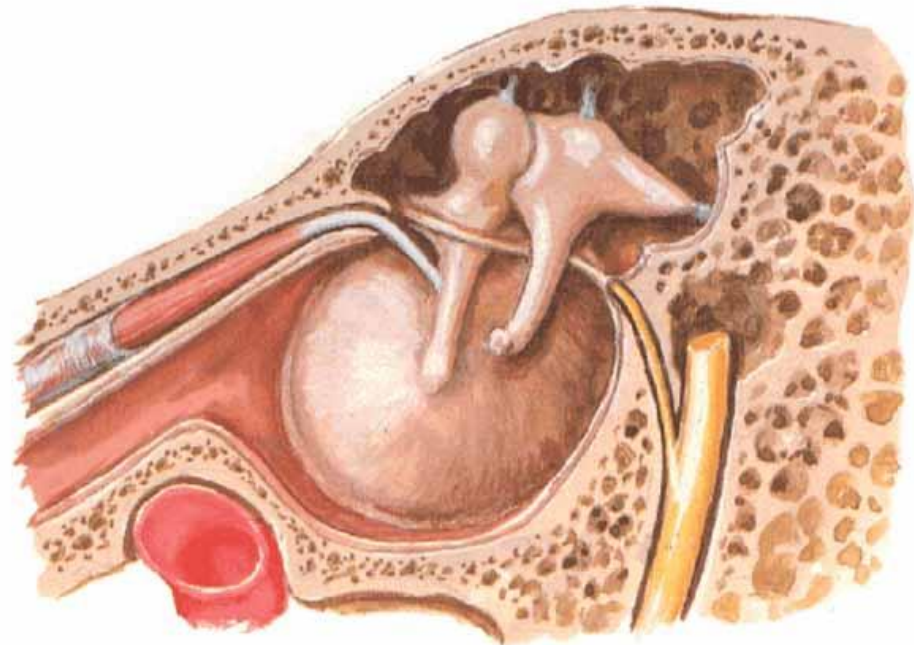
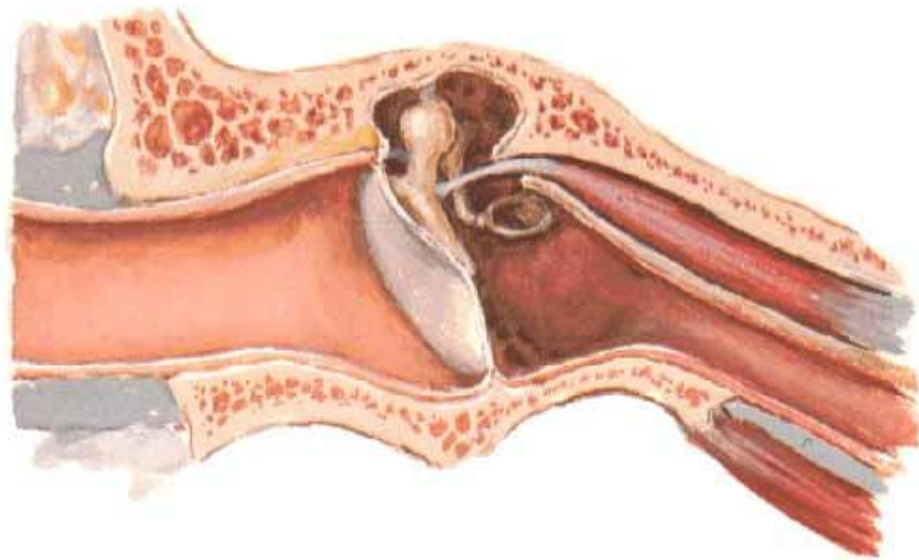
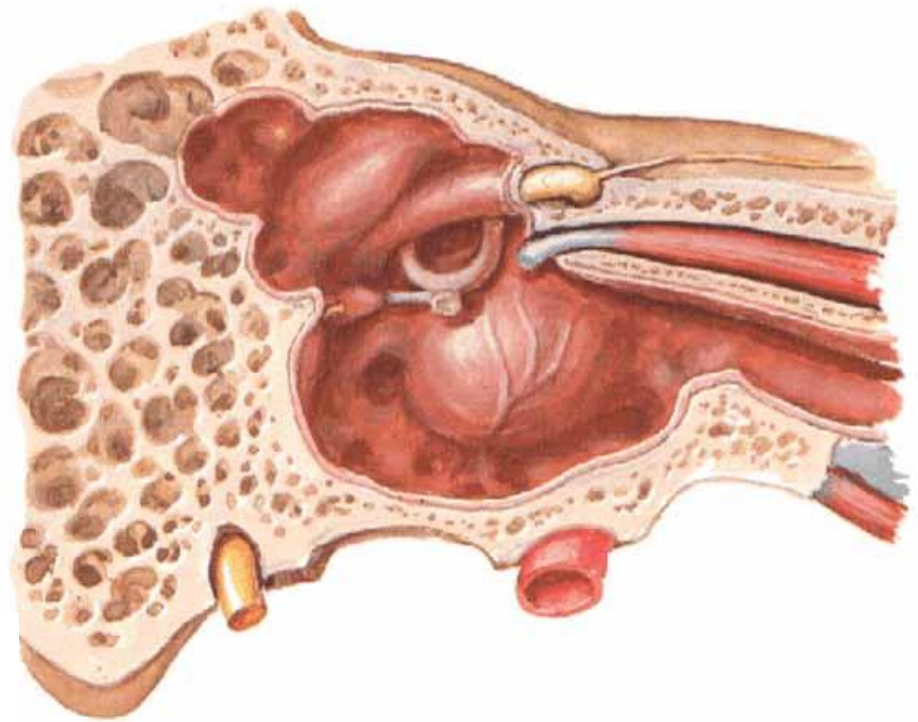


FIG. 354.—A coronal section through the right temporal bone. Anterior aspect.



Cavitas tympani (Bubínková dutina)

External Ear and Tympanic Cavity
Coronal Oblique Section



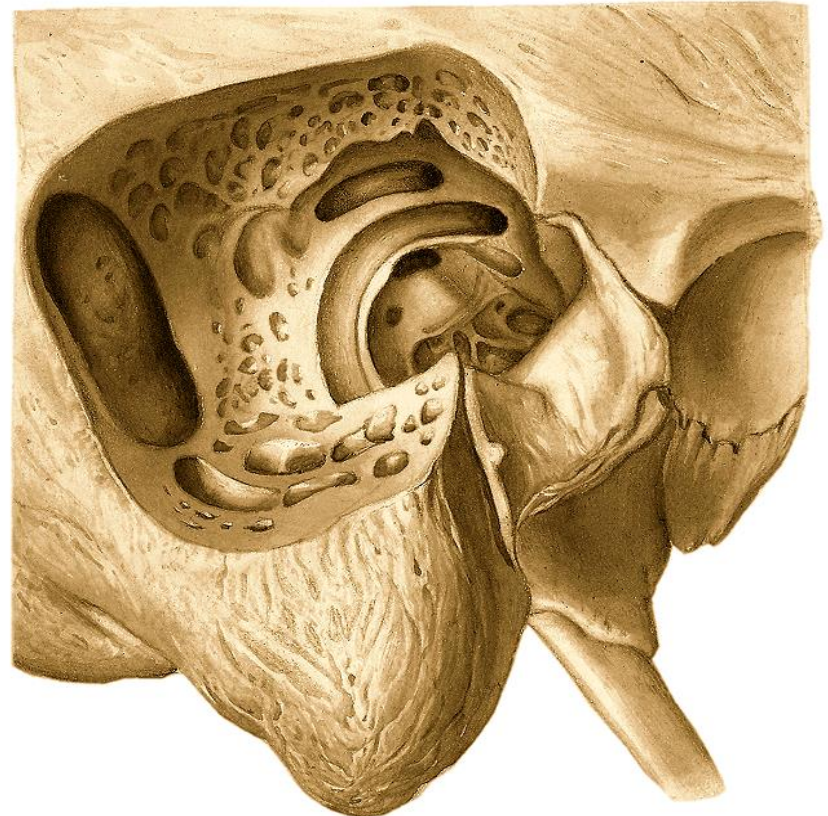
Antrum mastoideum

Soscová (Bradavková dutina)

- paries mastoideus: aditus ad antrum mastoideum
- **antrum mastoideum**
- **cellulae mastoideae**

vývoj postnatálně – 6. rok

- typ pneumatický
- typ diploický
- typ sklerotický
- cellulae tympanicae
- *mastoidektomie*



Canalis nervi facialis *Falloppii*

Fundus meatus acustici interni

Area facialis

Geniculum canalis nervi facialis / Kolínko kanálu lícniho nervu

Canalis nervi petrosi majoris

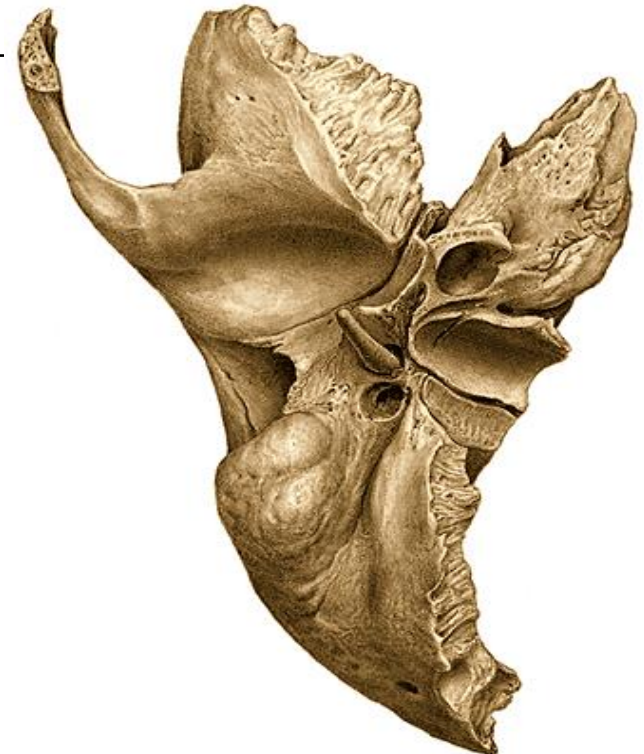
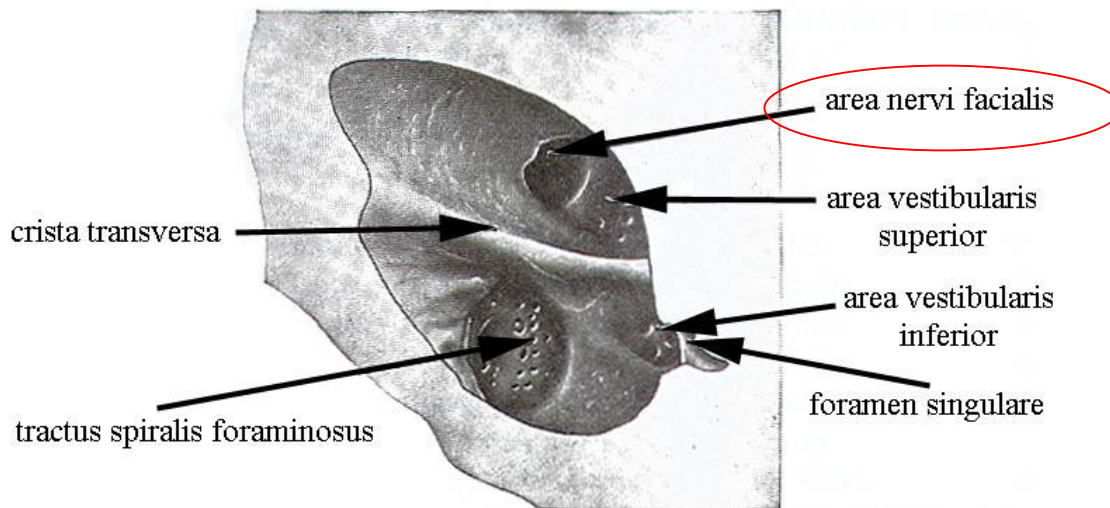
Kanálek pro n. stapedius do eminentia pyramidalis

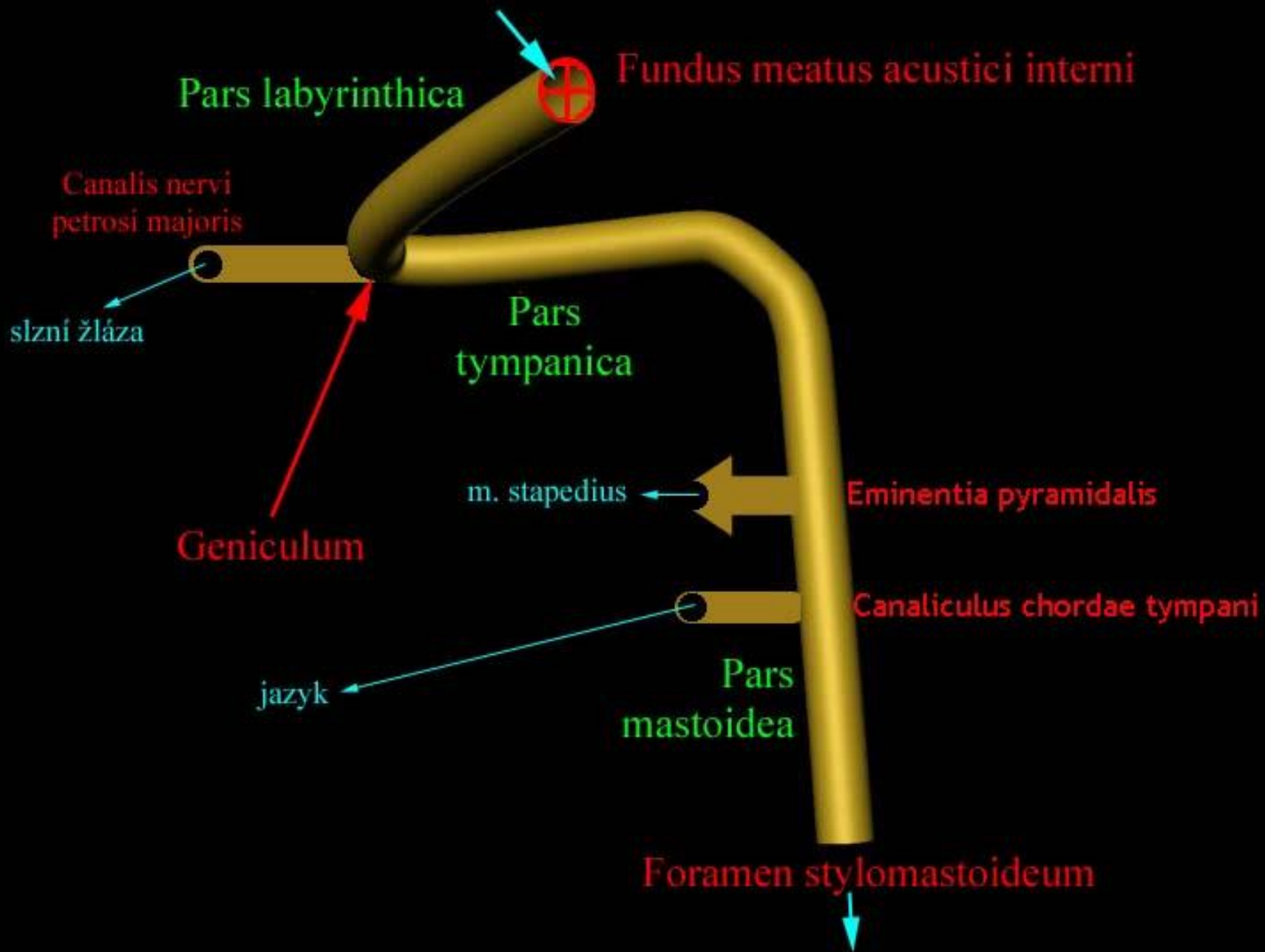
Canaliculus chordae tympani posterior / Kanálek pro středoušní strunu

Foramen stylomastoideum / Bodcoscovitý otvor

MEATUS ACUSTICUS INTERNUS

(fundus meatus acustici interni)





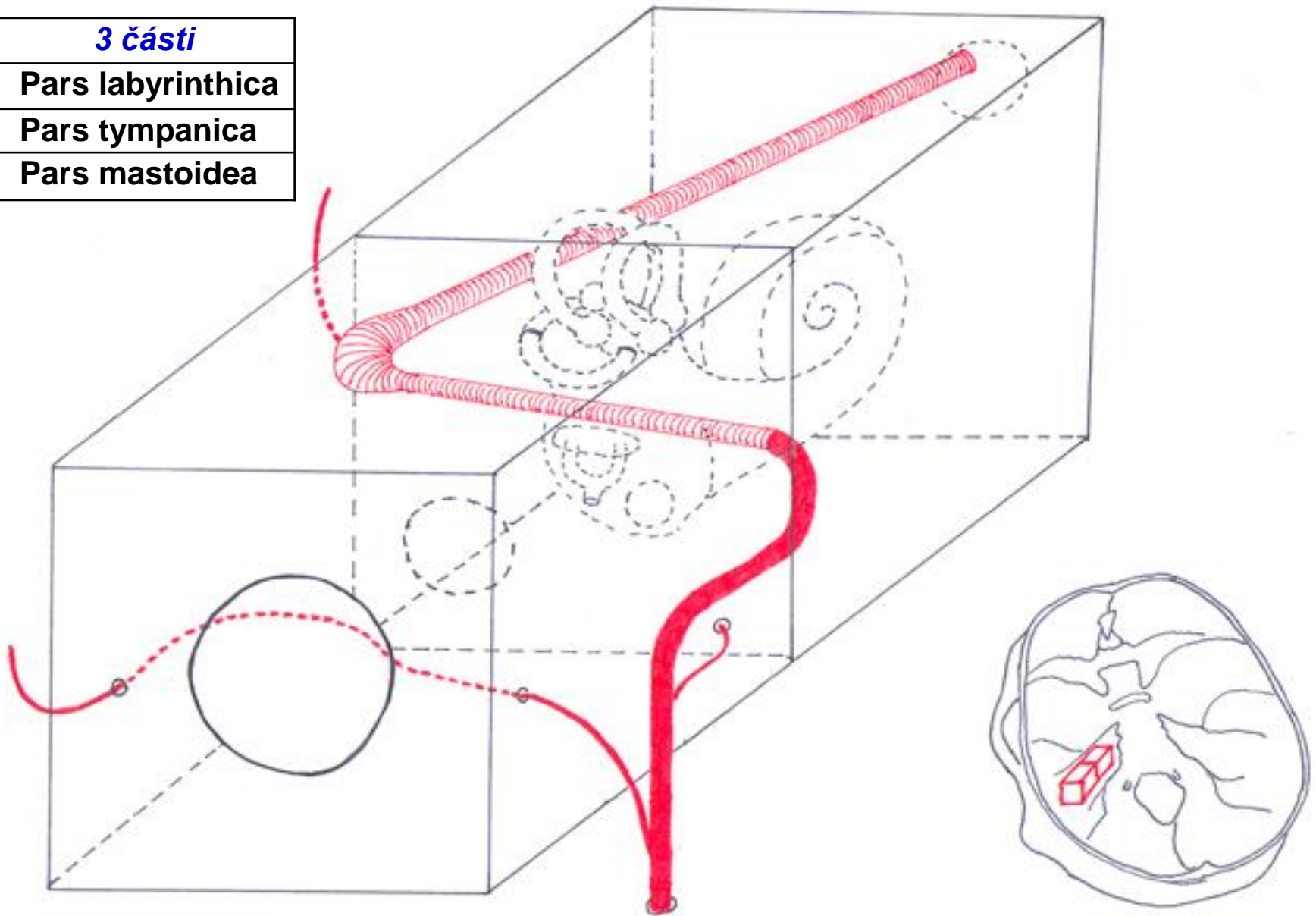
CANALIS NERVI FACIALIS *FALLOPPII* 1. sin.

3 části

Pars labyrinthica

Pars tympanica

Pars mastoidea



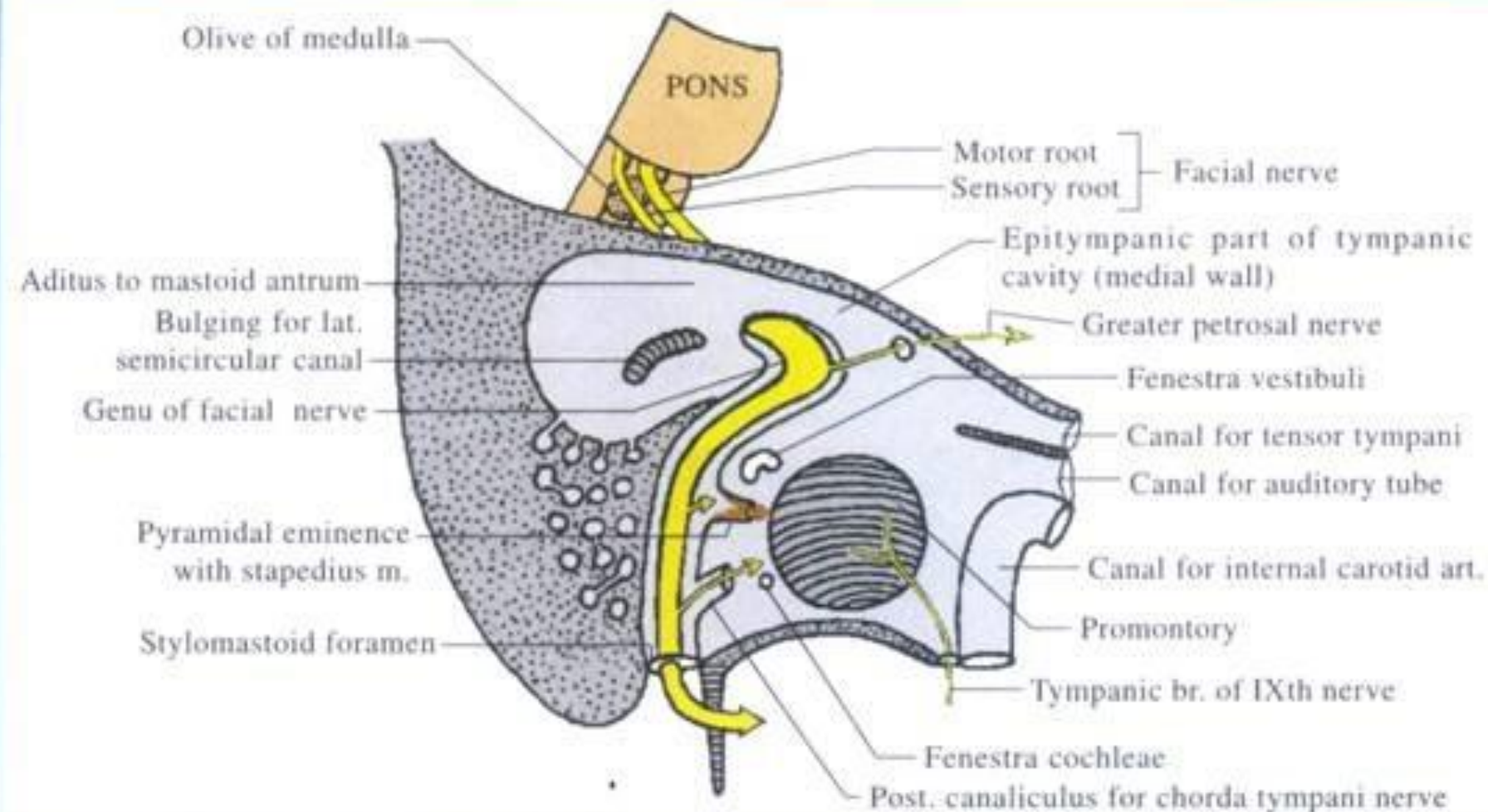
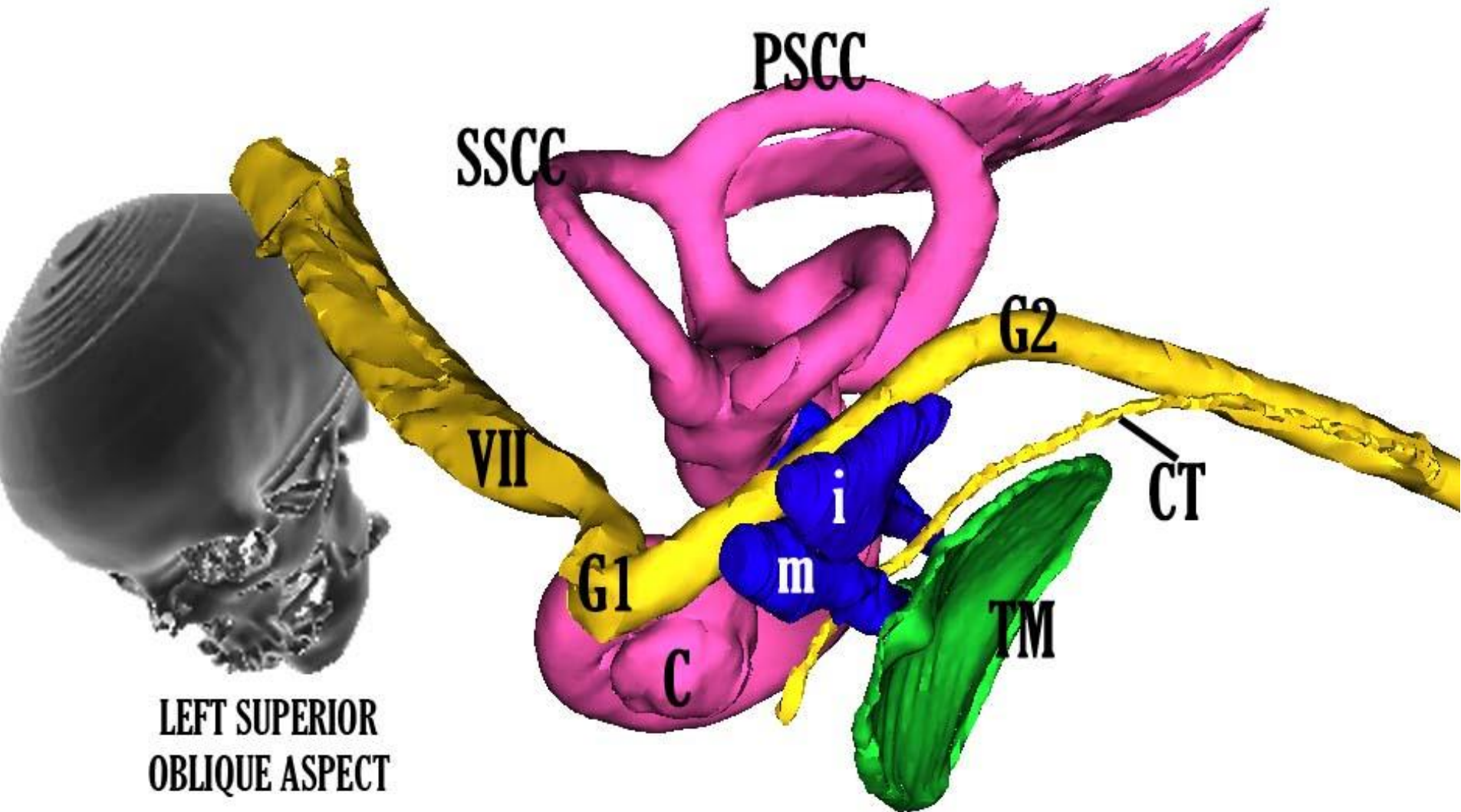
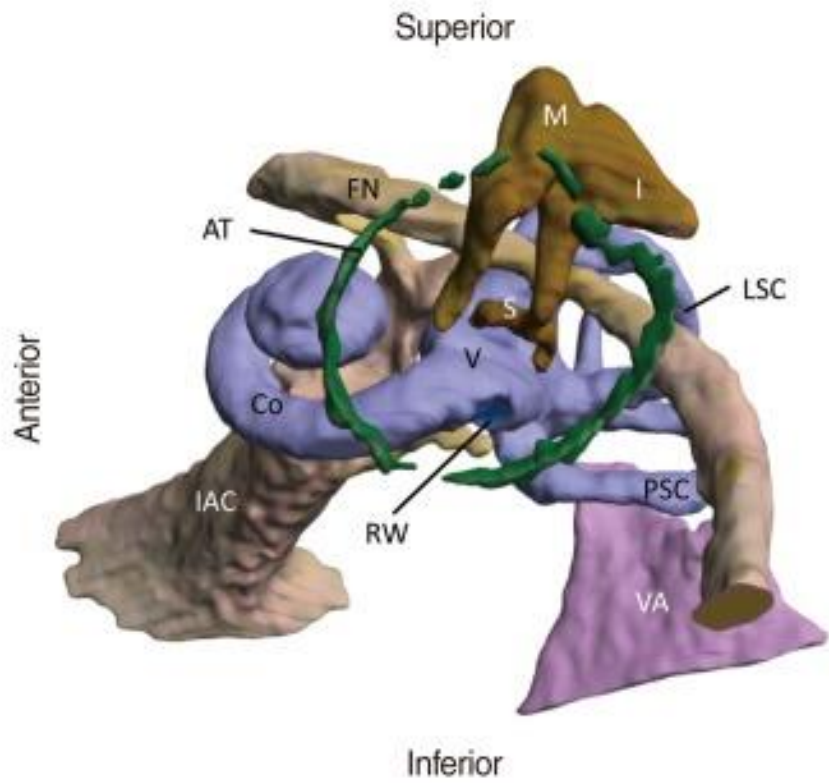


Fig. 14.9. *Facial nerve and its relations with middle ear.*

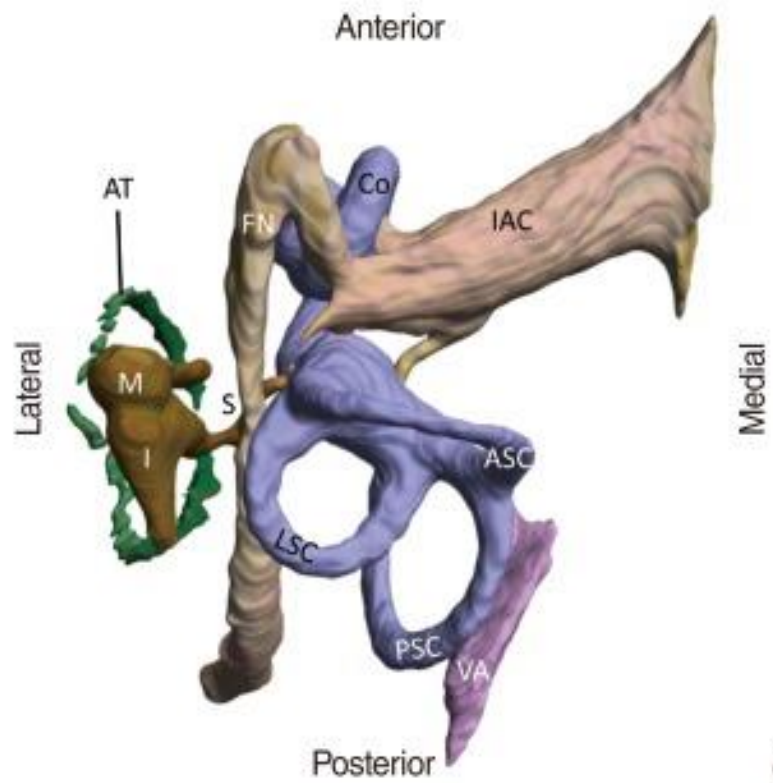
Canalis nervi facialis *Fallopiani*





Posterior

A



B

