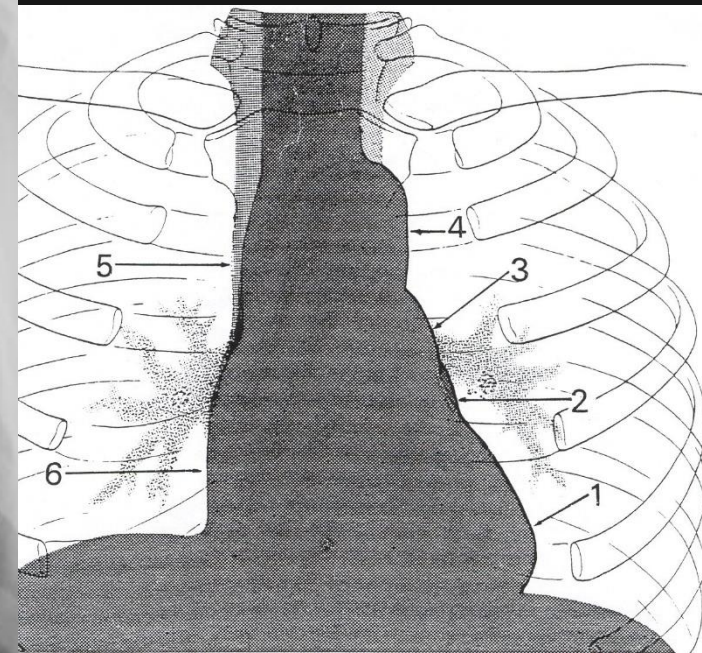
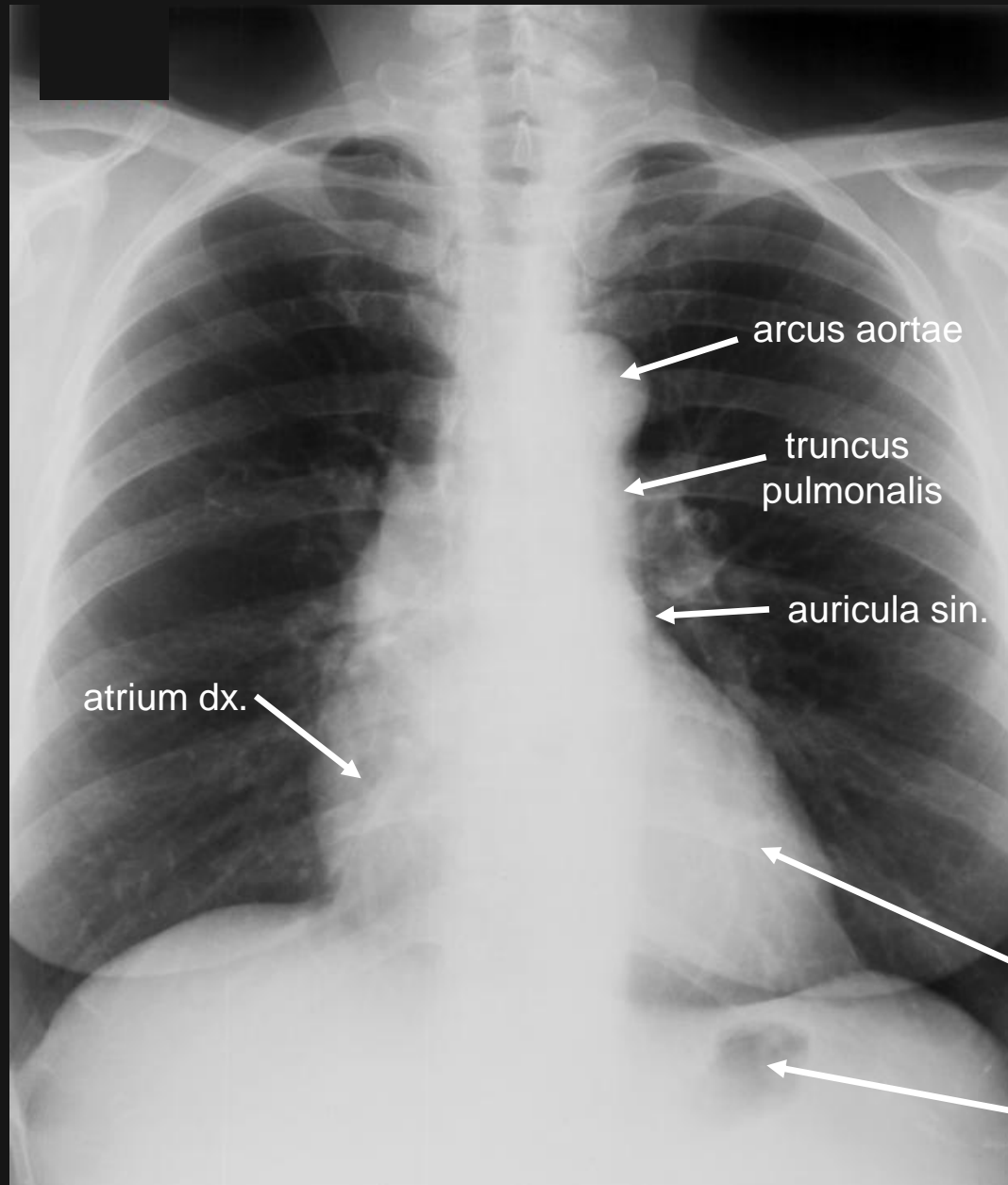


Srdce a krevní cévy

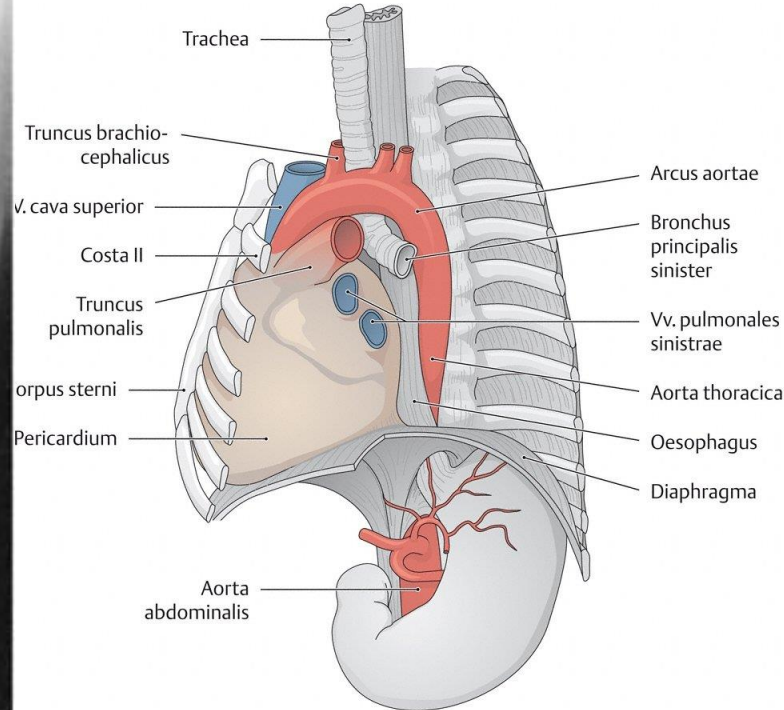
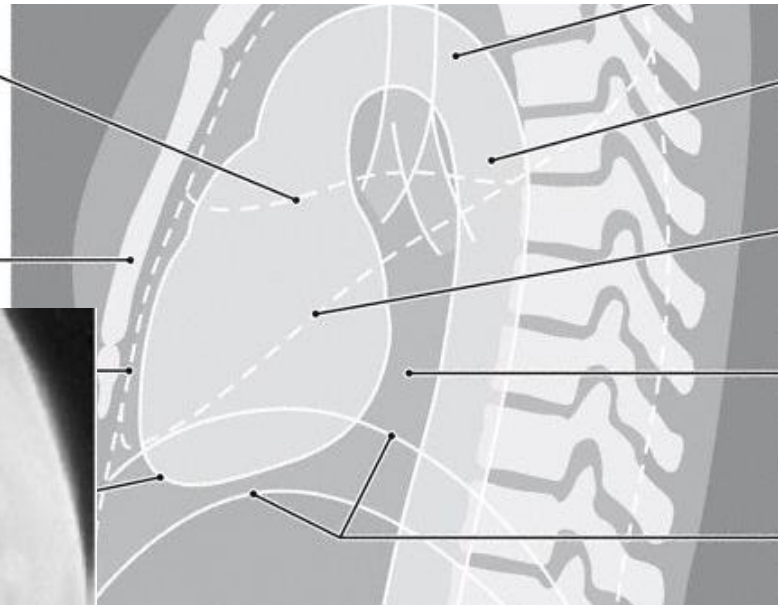
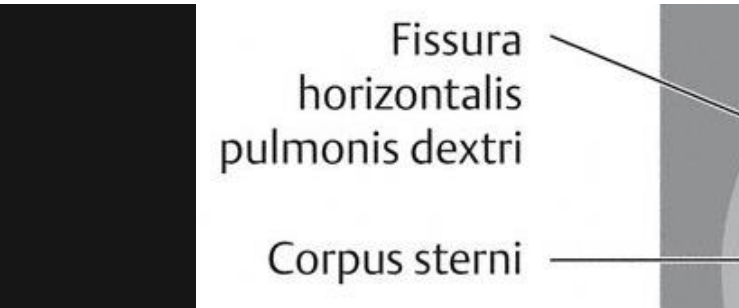
Heart and blood vessels

Rentgen srdce / X-ray of the heart

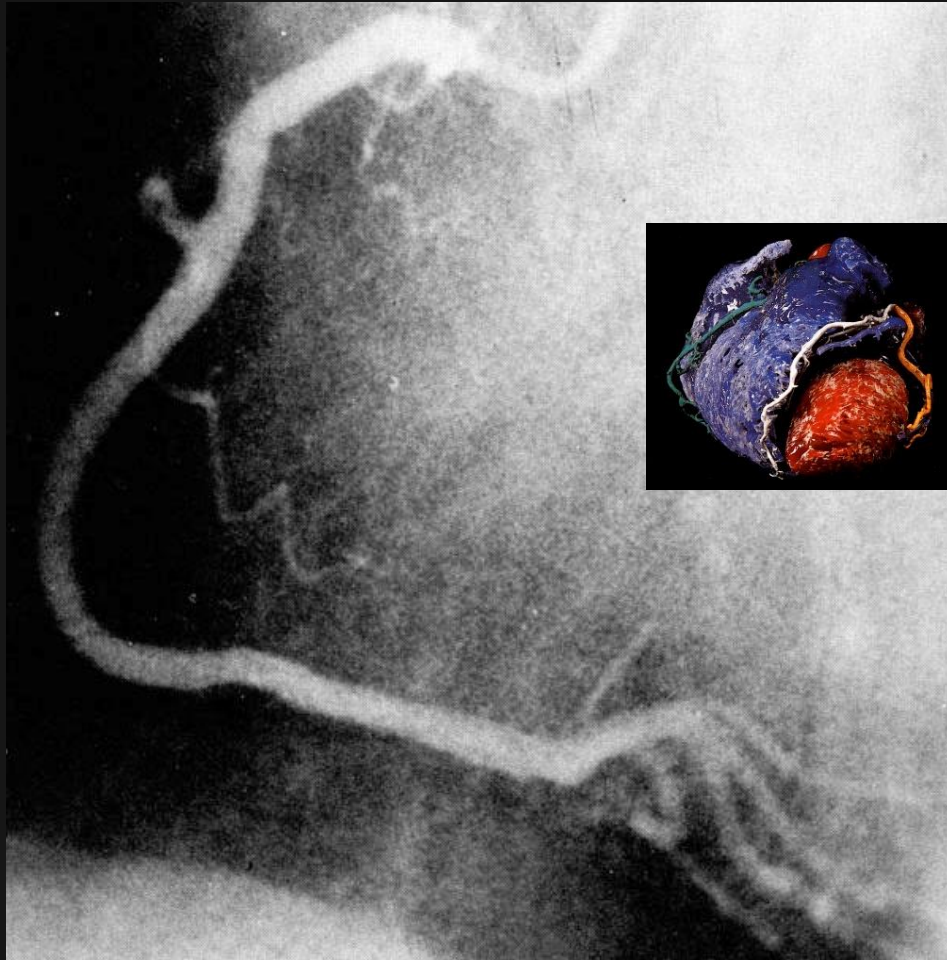
předožadní pohled / posteroanterior view



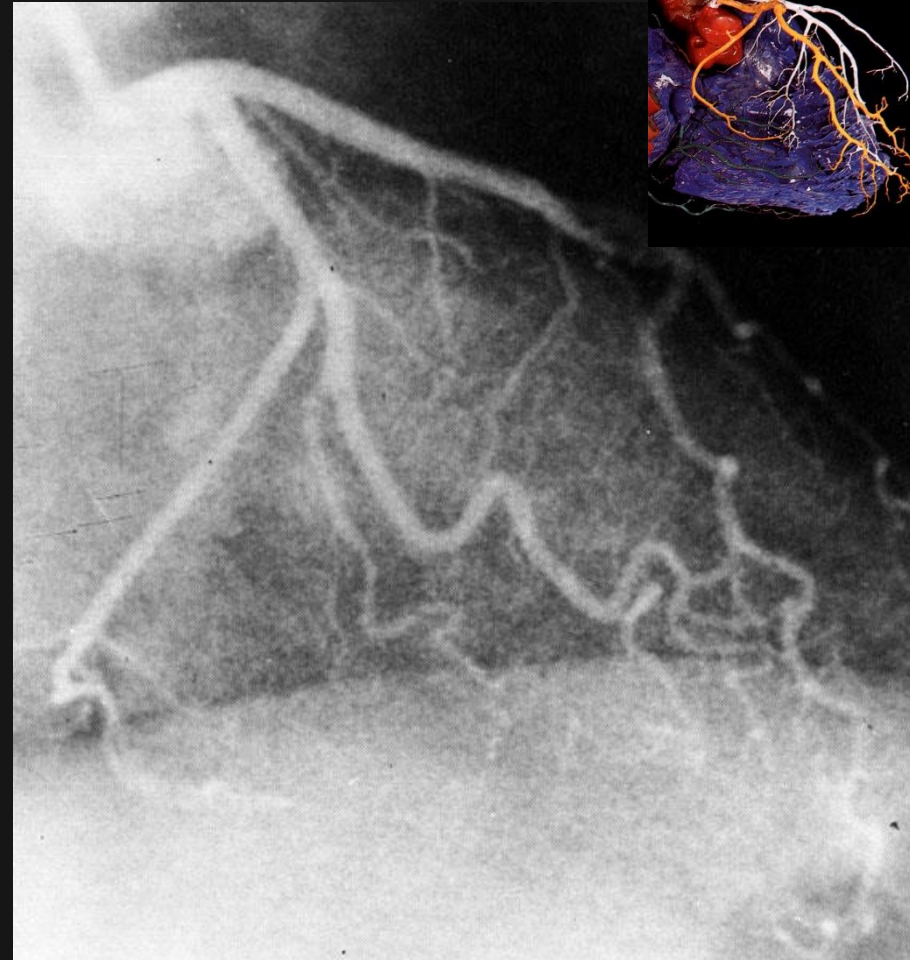
Rentgen srdce / X-ray of the heart – *posteroanterior view*



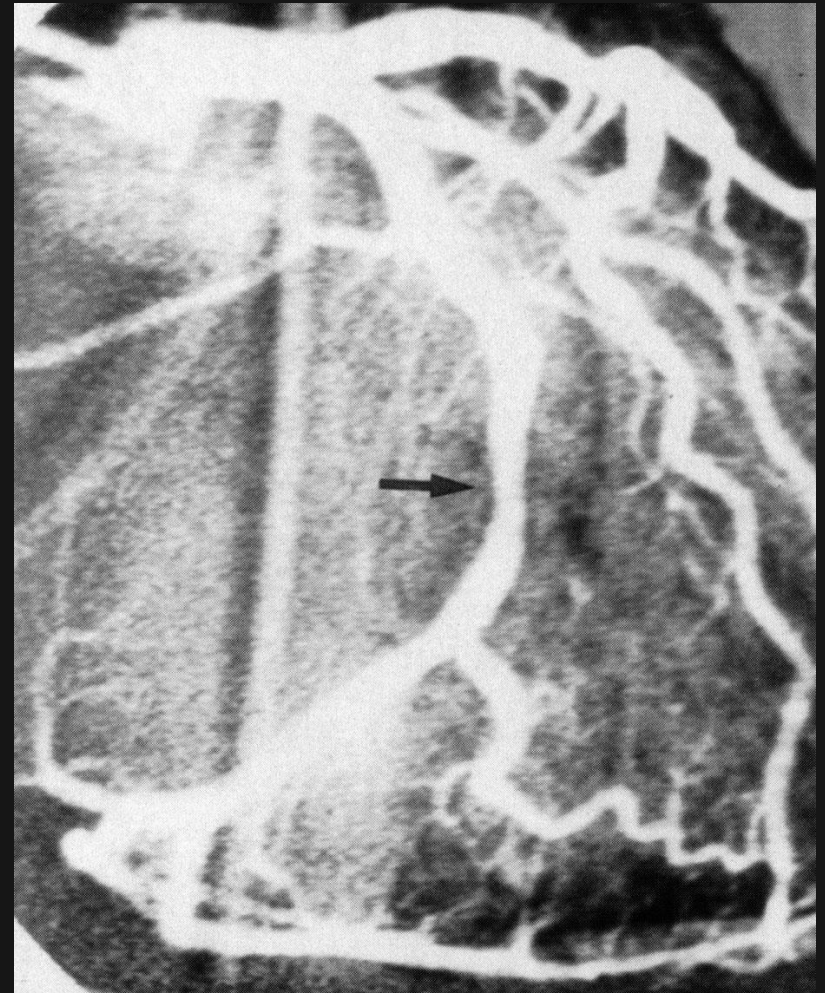
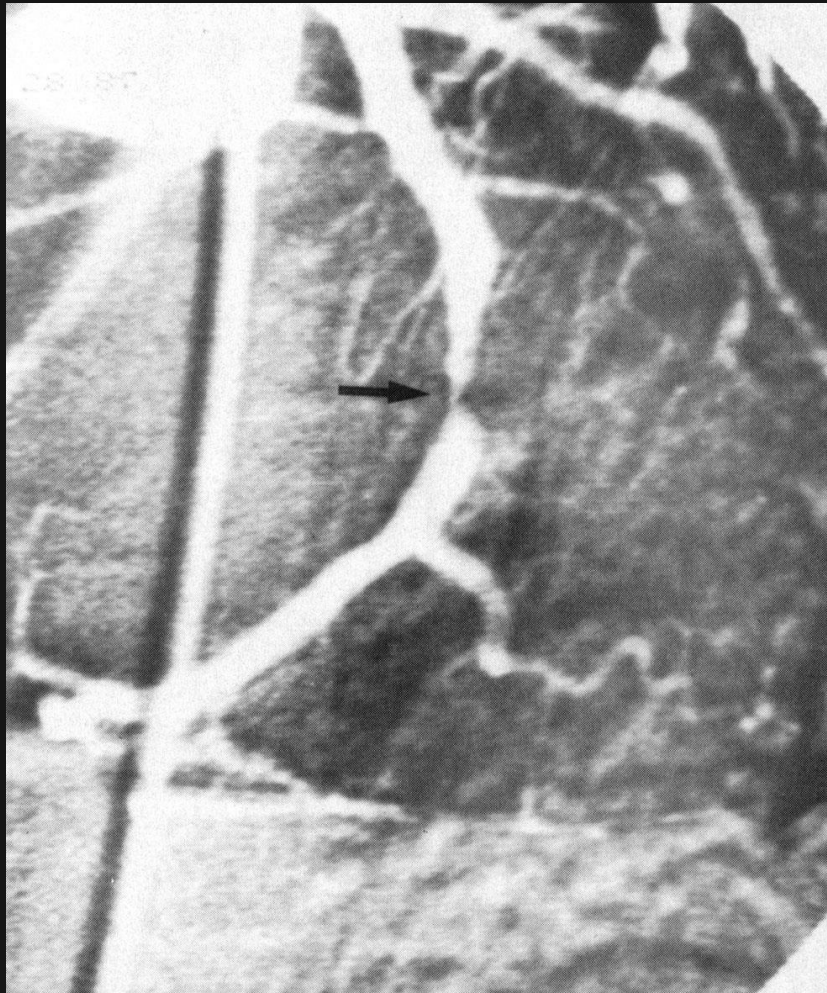
**Arteria coronaria dextra
Koronarografie /
Coronarography**



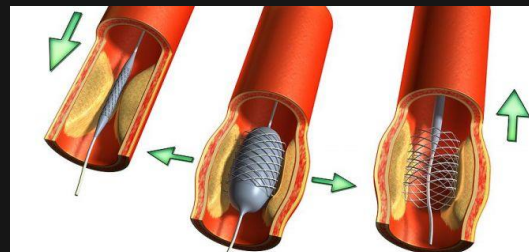
**Arteria coronaria sinistra
Koronarografie /
Coronarography**



Perkutánní Transluminální Coronární Angioplastika (PTCA) Percutaneous Transluminal Coronary Angioplasty (PTCA)



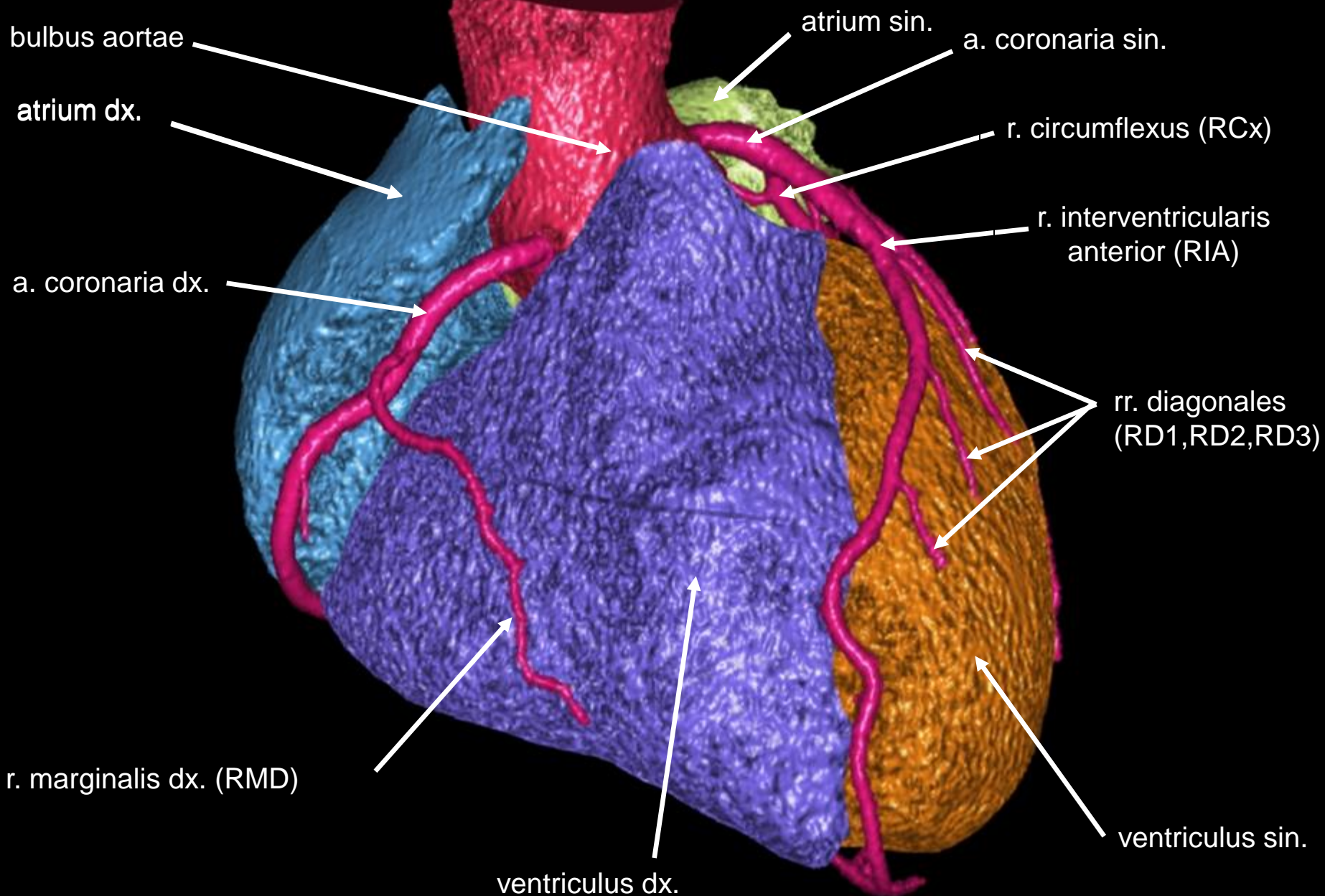
stenóza RIA / stenosis of anterior
interventricular ramus
angiografie s jódovou kontrastní látkou
angiography with iodine contrast fluid



dilatace stenózy
metodou PTCA
dilation of stenosis
with PTCA

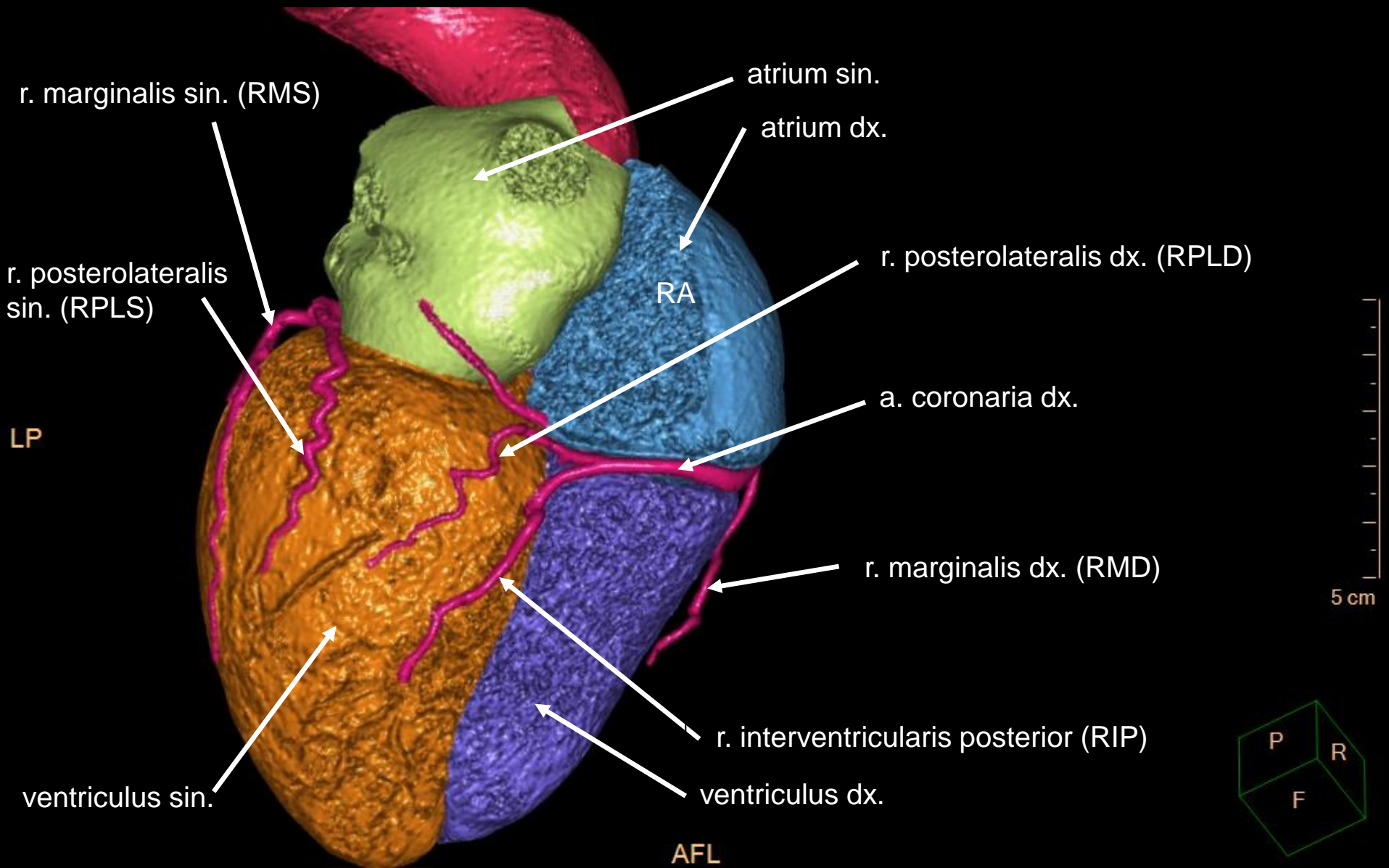
3D CT koronarografie / 3D CT coronarography

pohled zepředu / anterior view

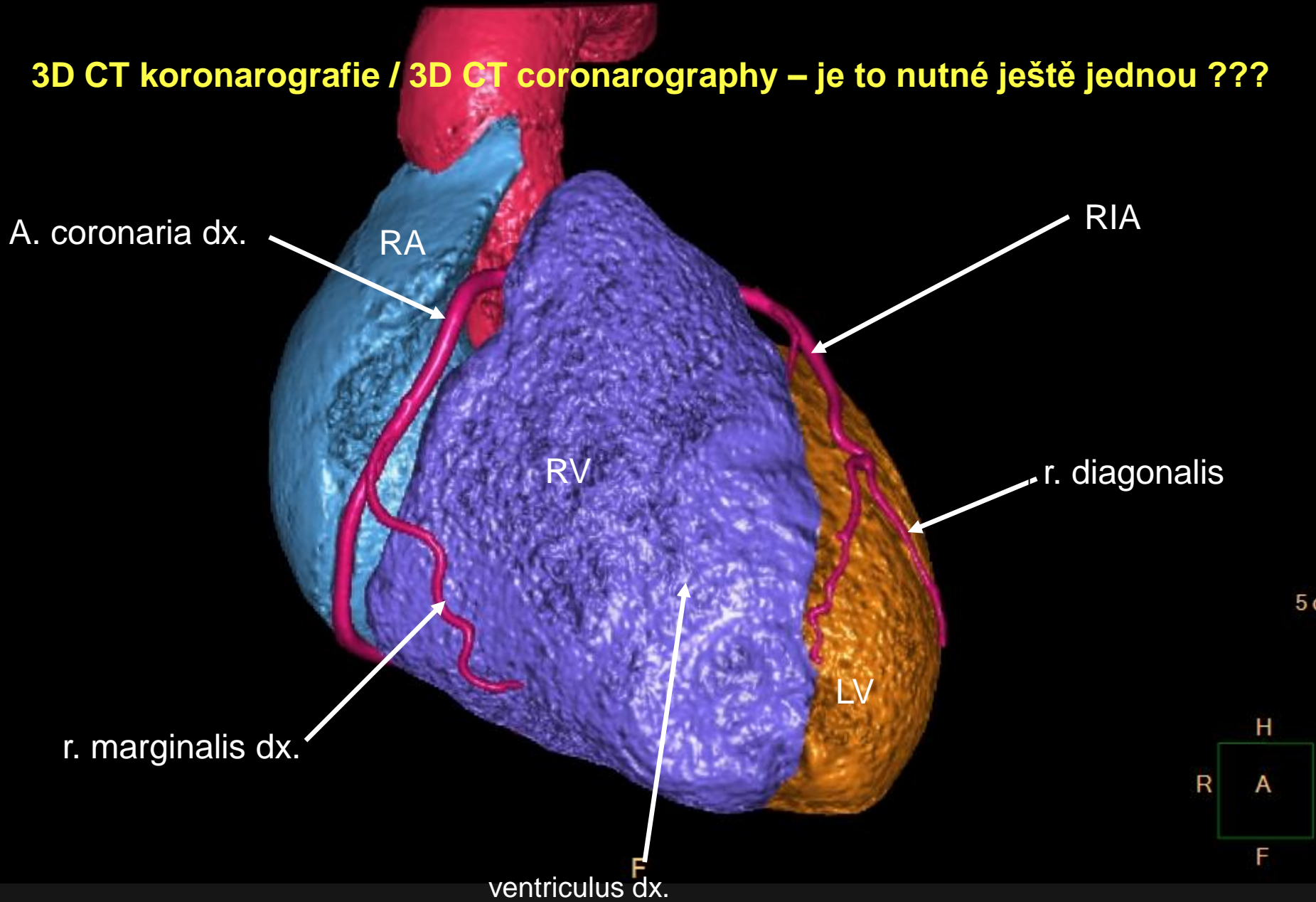


3D CT koronarografie / 3D CT coronarography

pohled zdola / inferior view

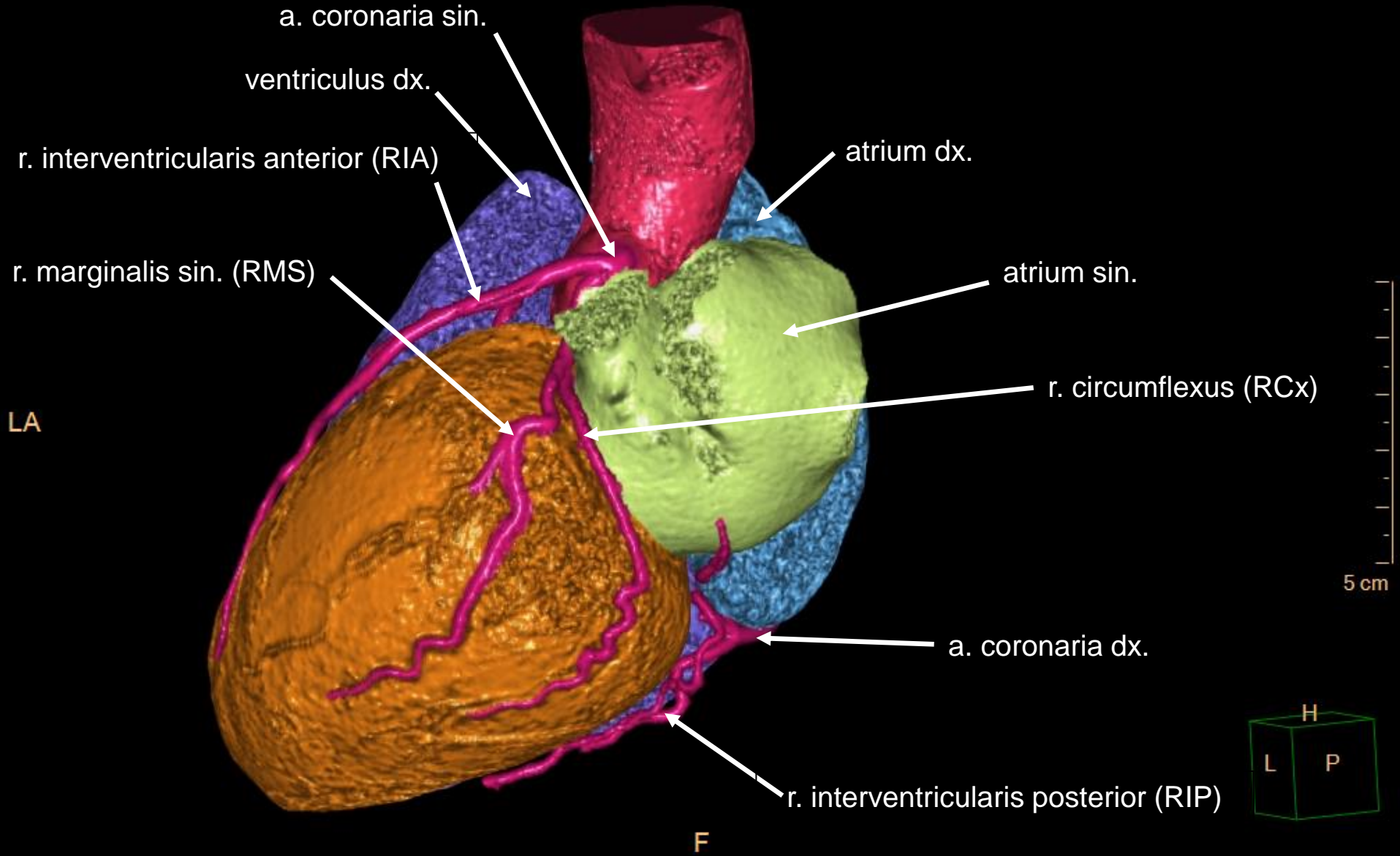


3D CT koronarografie / 3D CT coronarography – je to nutné ještě jednou ???



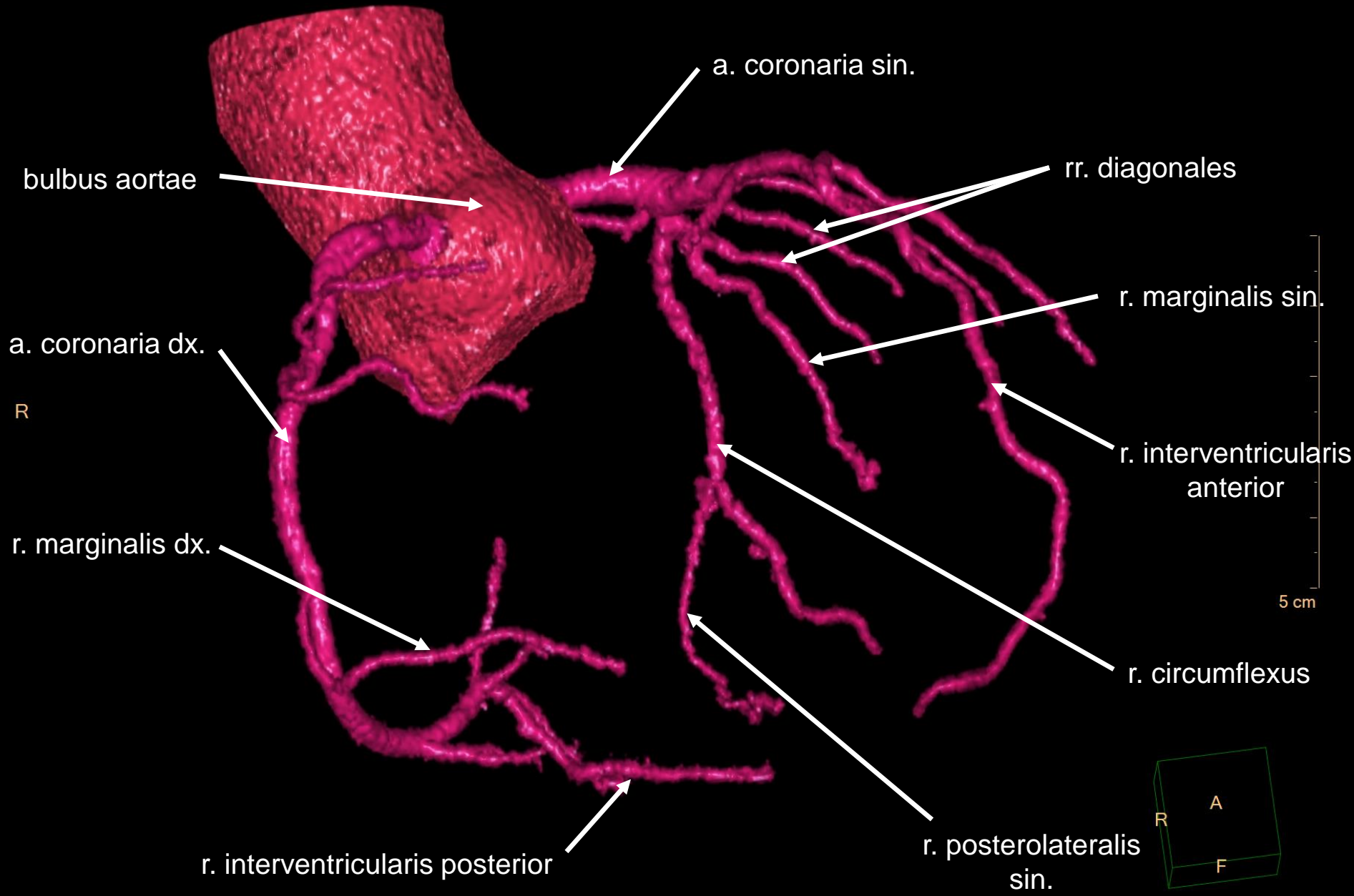
3D CT koronarografie / 3D CT coronarography

pohled zleva / left view



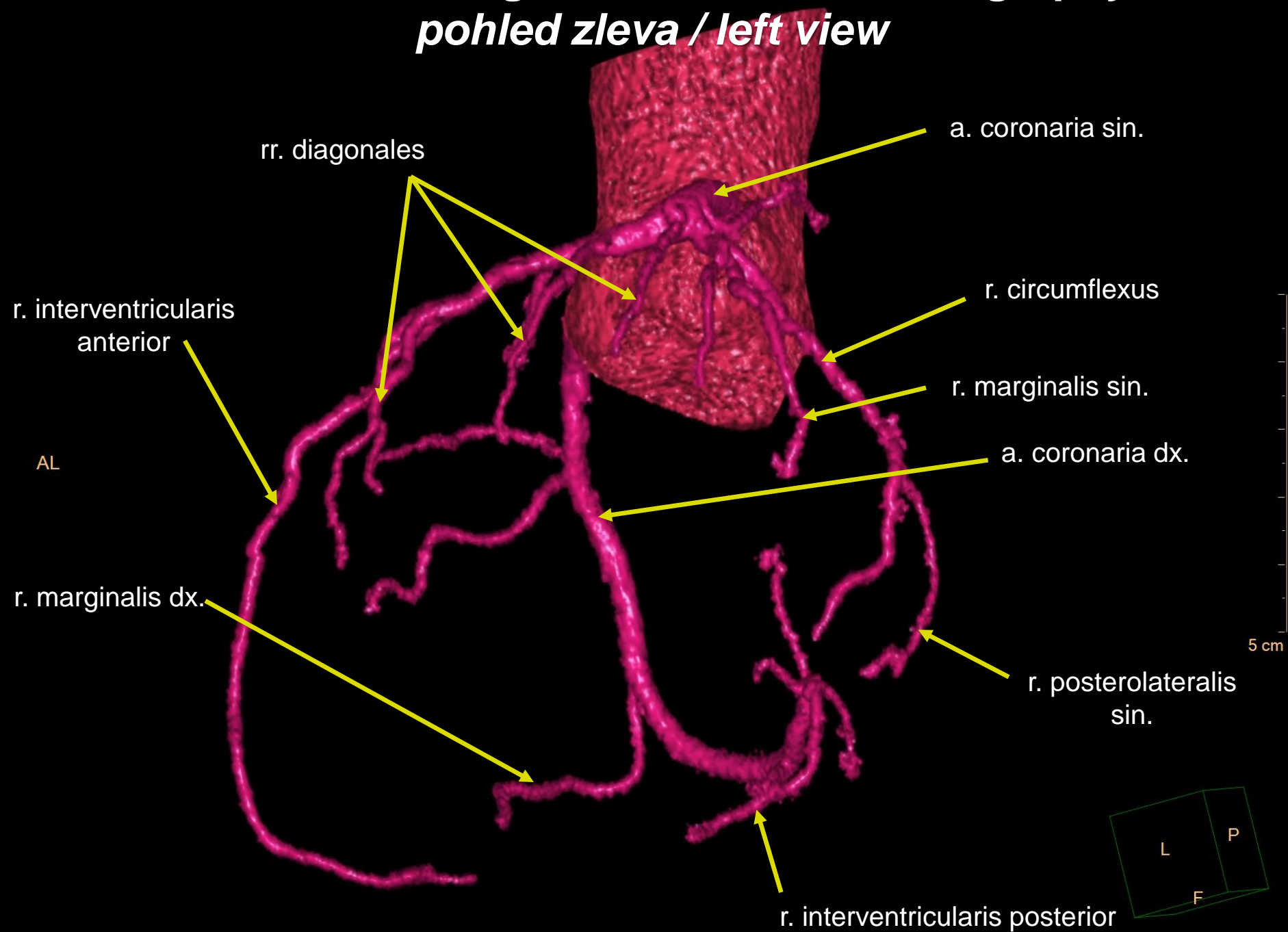
3D CT koronarografie / 3D CT coronarography

pohled zprava / right view



3D CT koronarografie / 3D CT coronarography

pohled zleva / left view



3D CT koronarografie / 3D CT coronarography

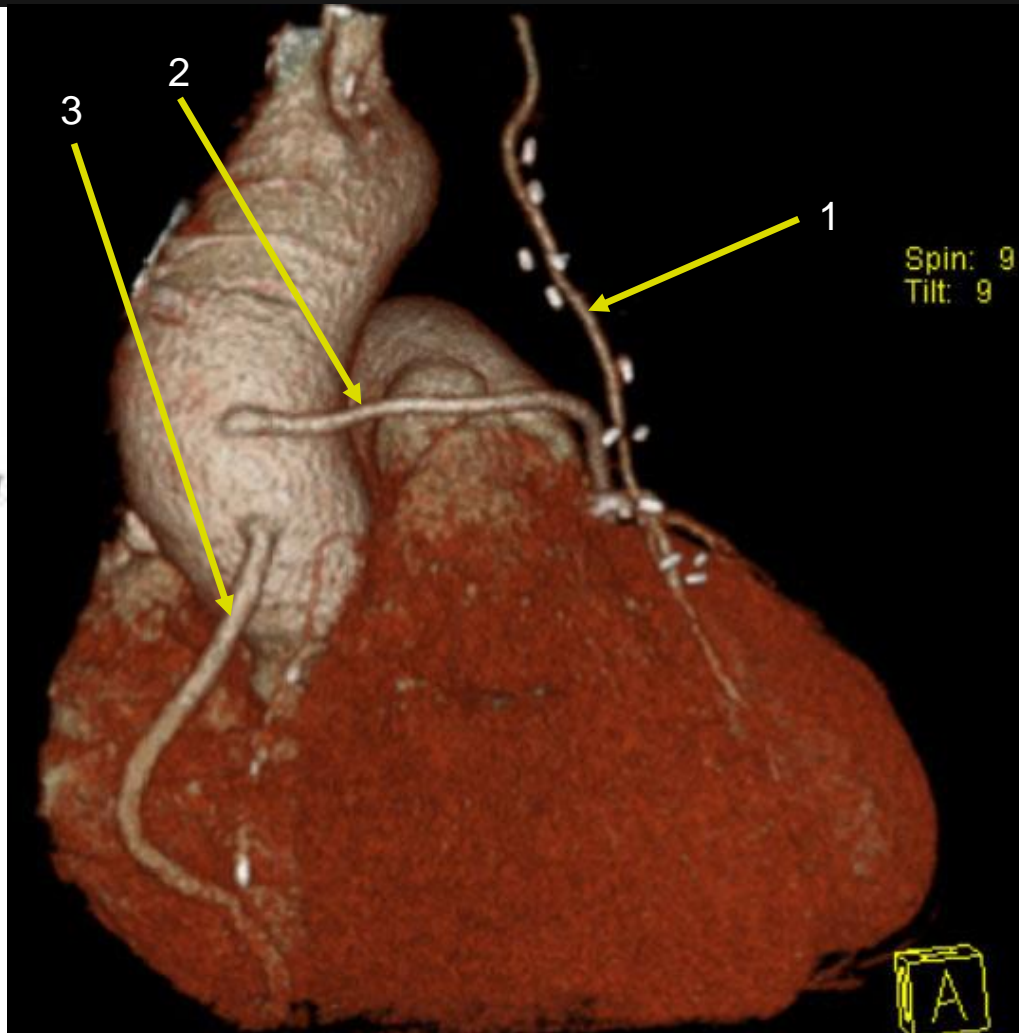
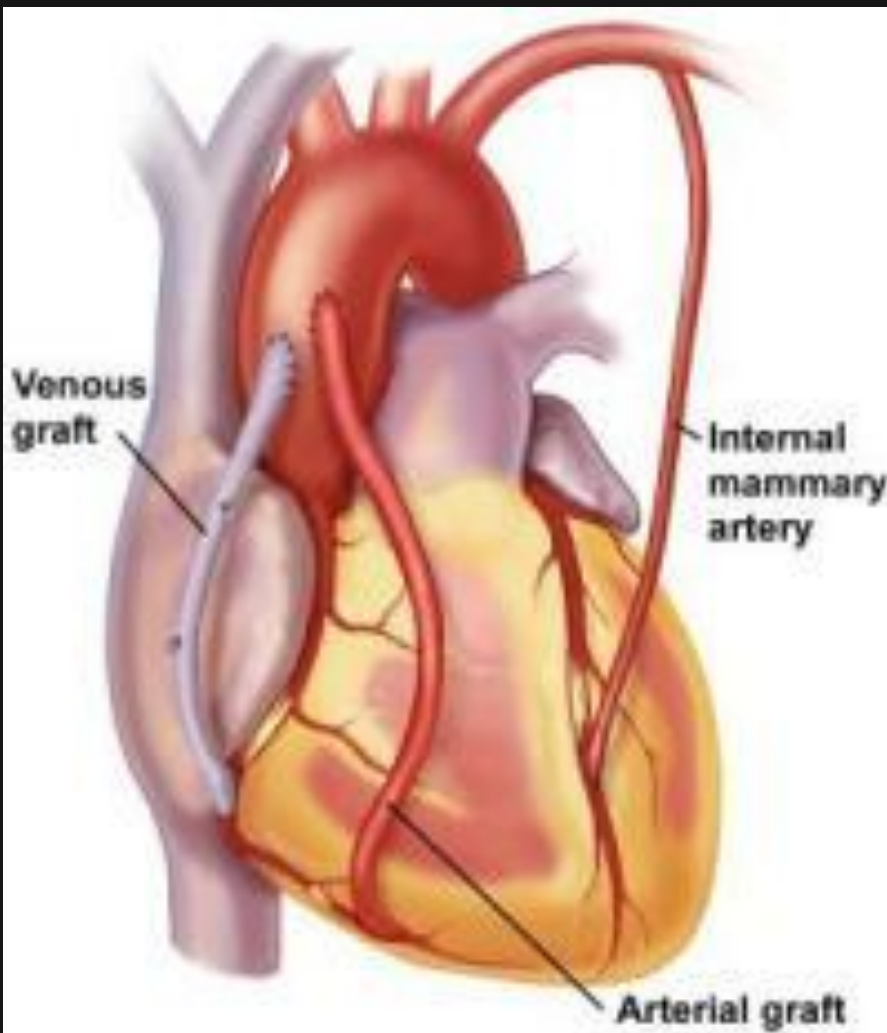
Bypass z a. thoracica interna sinistra na RIA („LIMA-RIA“) (1)

Bypass using a. thoracica interna sinistra to RIA („LIMA-RIA“) (1)

Aortokoronární bypass pomocí štěpu z v. saphena magna na RCx (2) a ACR (3)

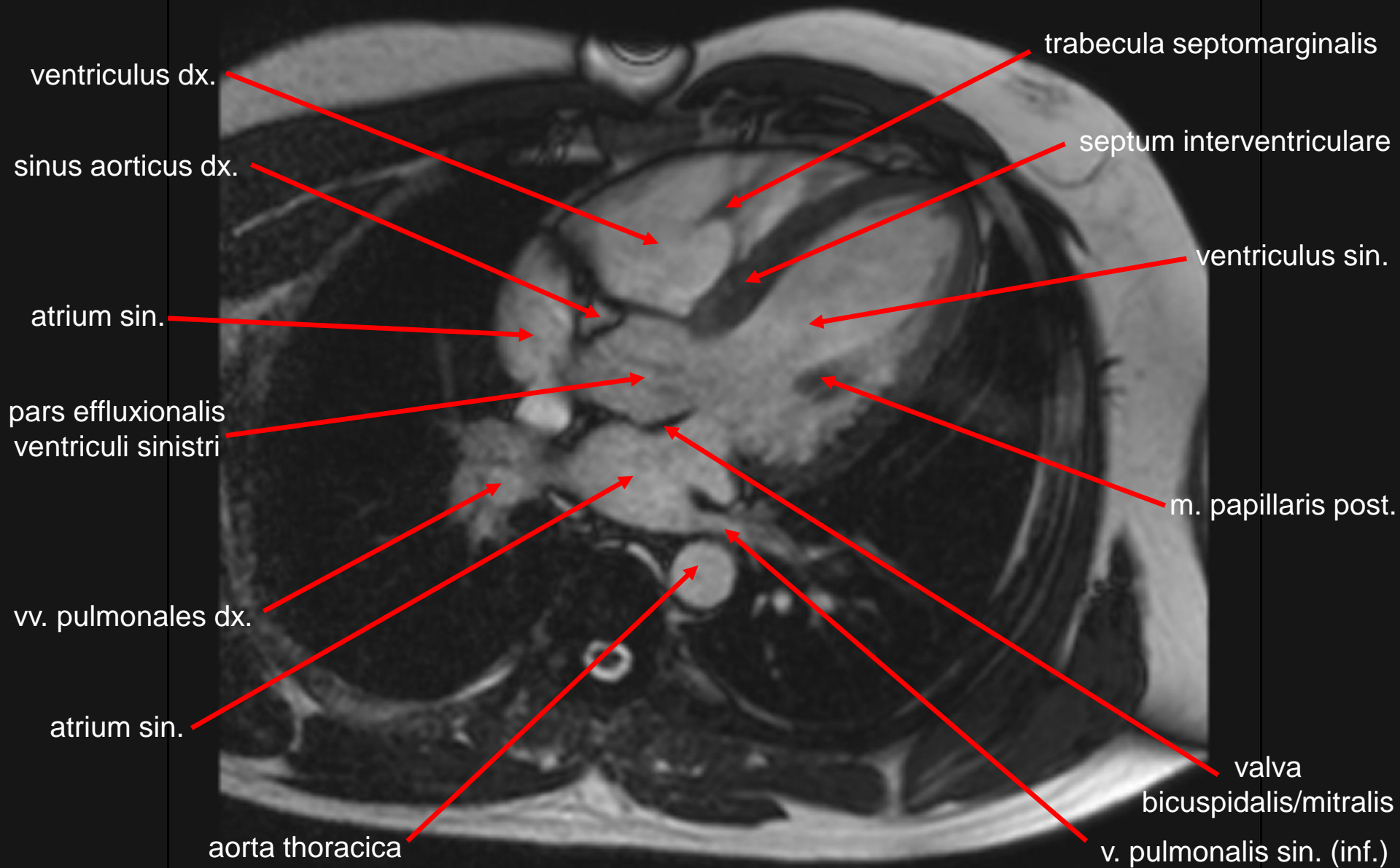
Aortocoronary bypass using v. saphena magna graft to RCx (2) and ACR (3)

pohled zepředu / anterior view



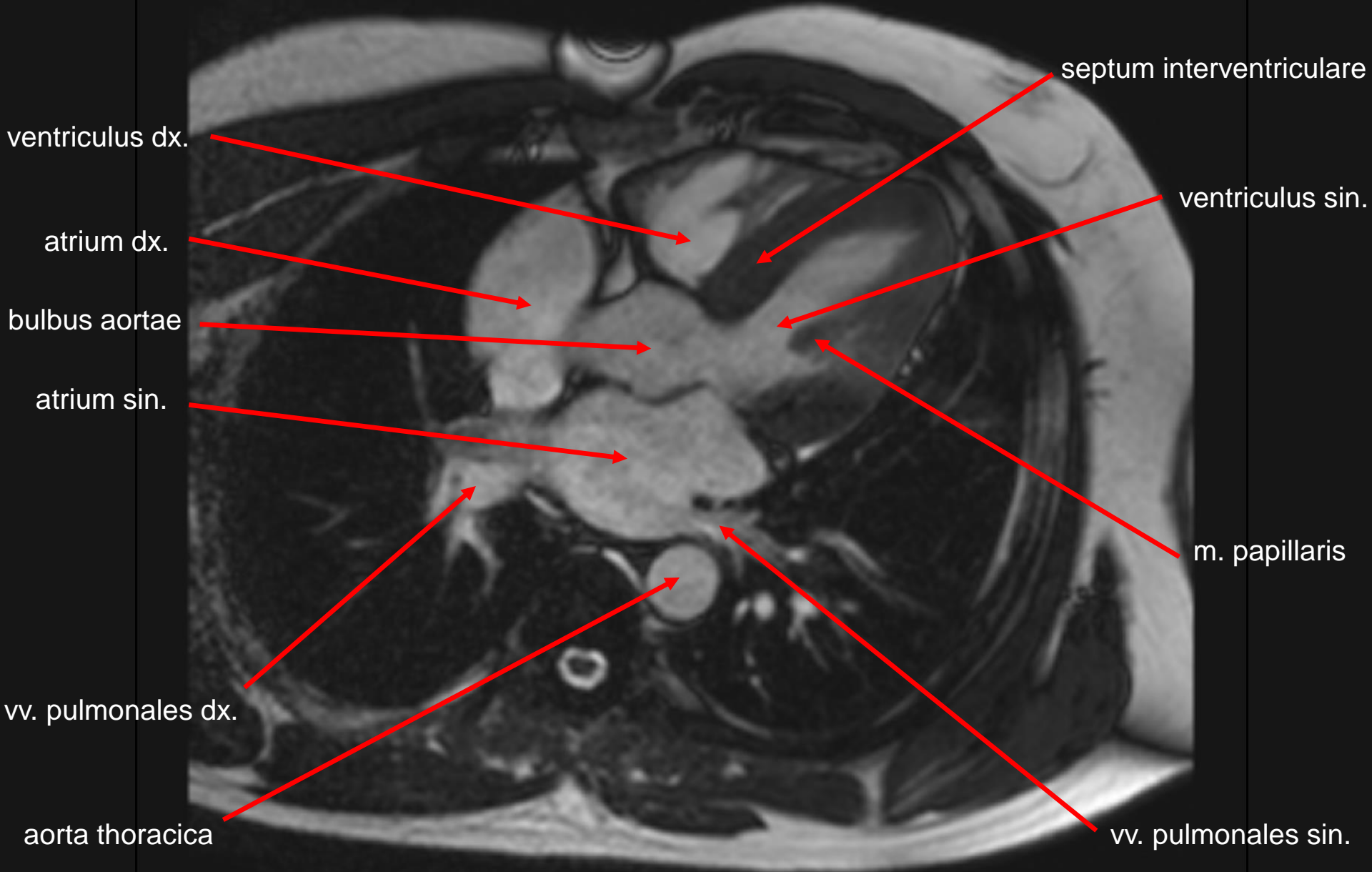
MR srdce / MRI of the heart

transverzální řez / transverse section



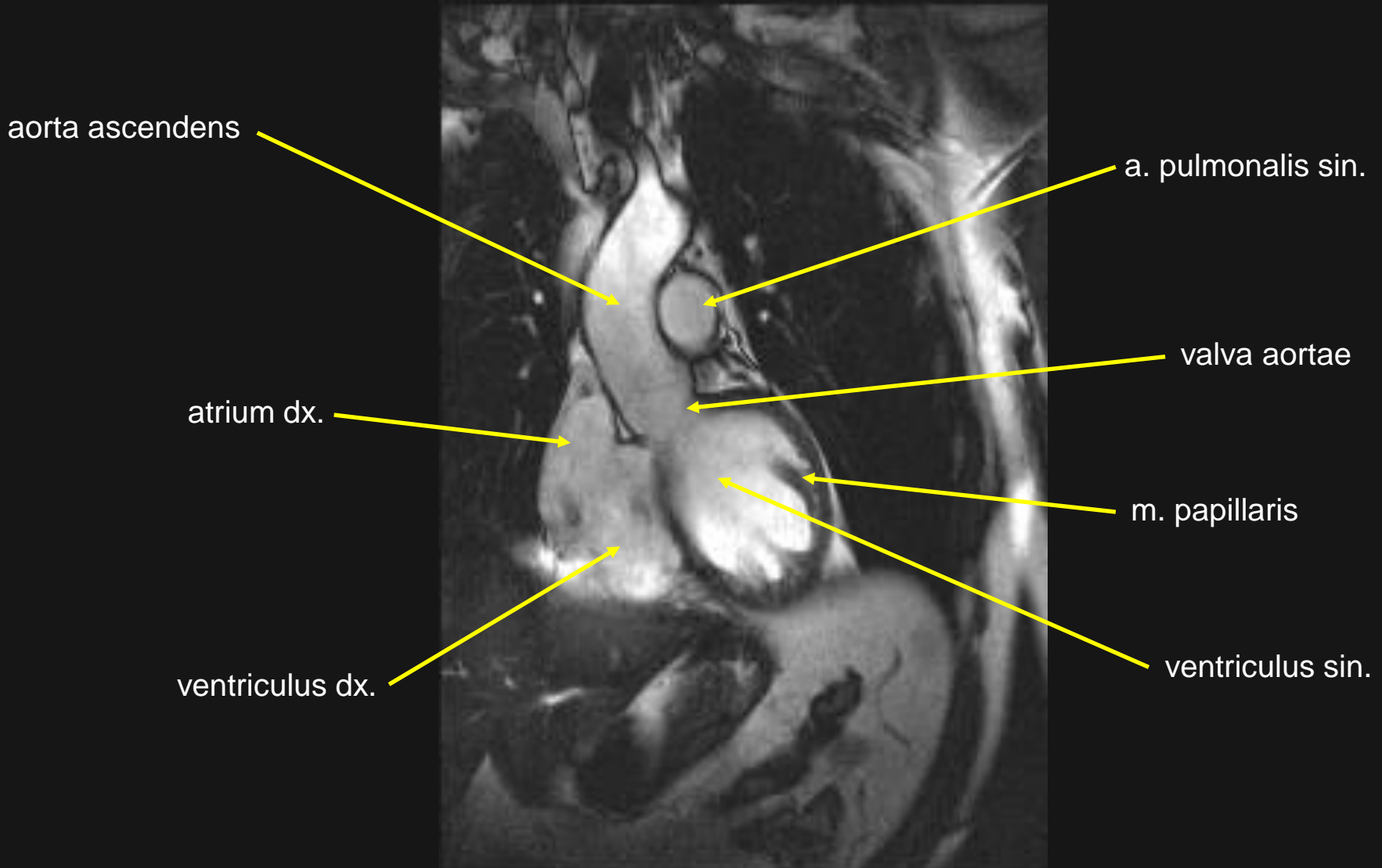
MR srdce / MRI of the heart

transverzální řez / transverse section



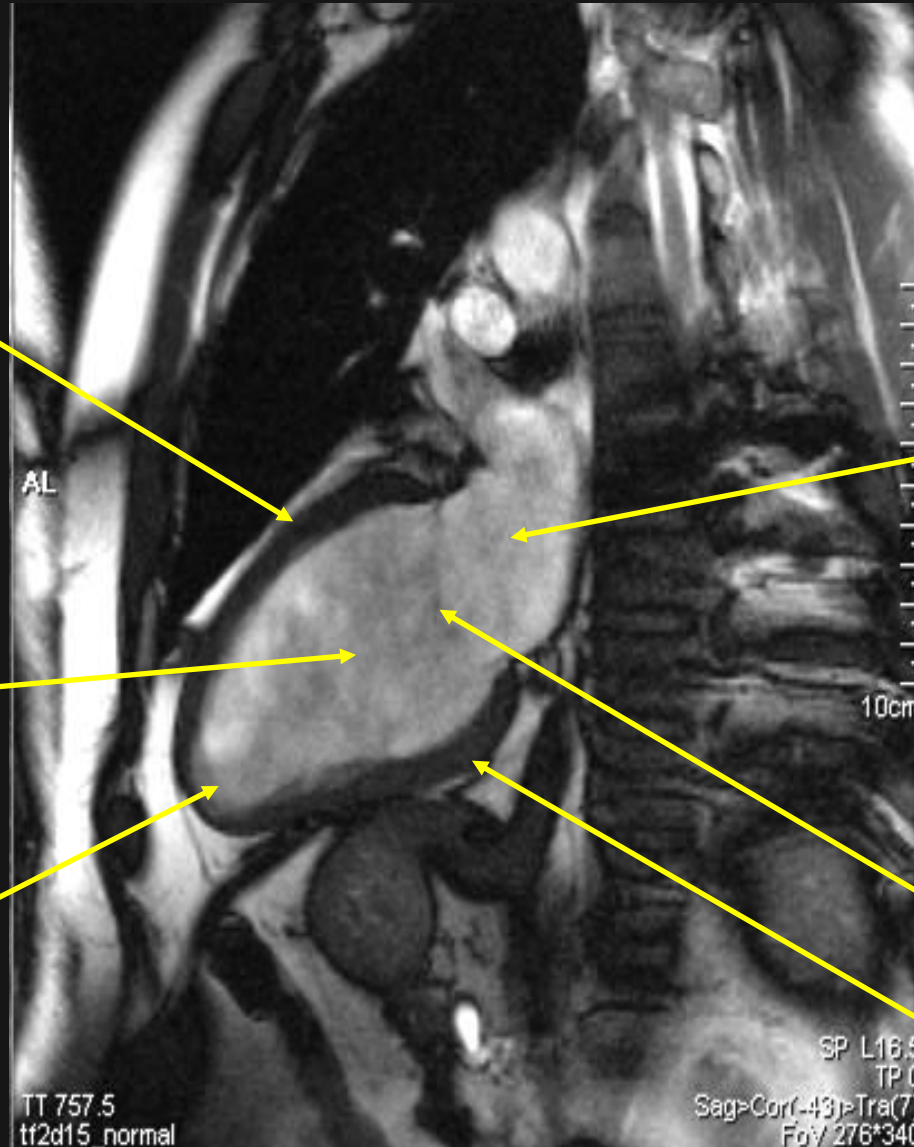
MR srdce: výtoková část levé komory

MRI of the heart: pars/tractus effluxionalis ventriculi sinistri (aortic outflow tract)



MR srdce: 2komorová projekce – dlouhá osa

MRI of the heart: 2-chamber vertical long axis



ventriculus sinister
(paries anterior)

atrium sin.

ventriculus sinister
(cavitas)

valva bicuspidalis/mitralis

apex cordis

ventriculus sinister
(paries posterior)

MR srdce: vtoková část pravé komory

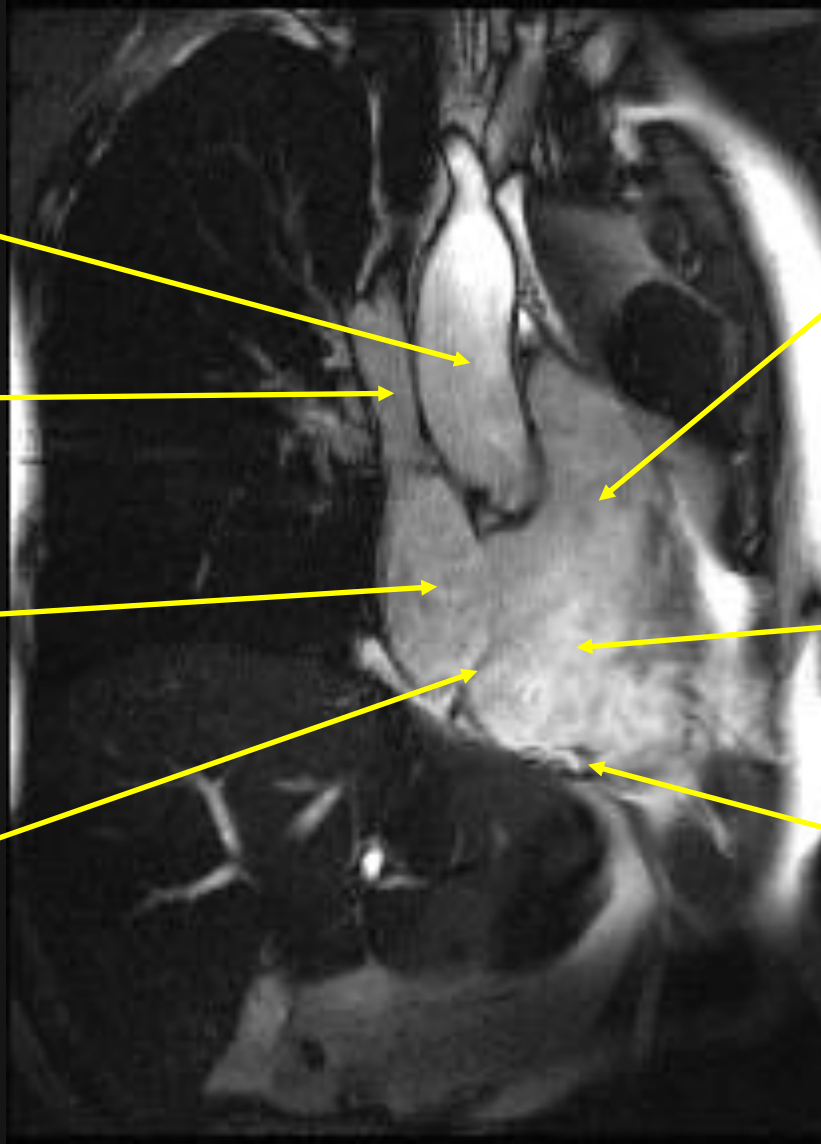
MRI of the heart: pars/tractus inffluxionalis ventriculi dextri (right ventricular inflow tract)

aorta ascendens

vena cava superior

atrium dx.

valva tricuspidalis



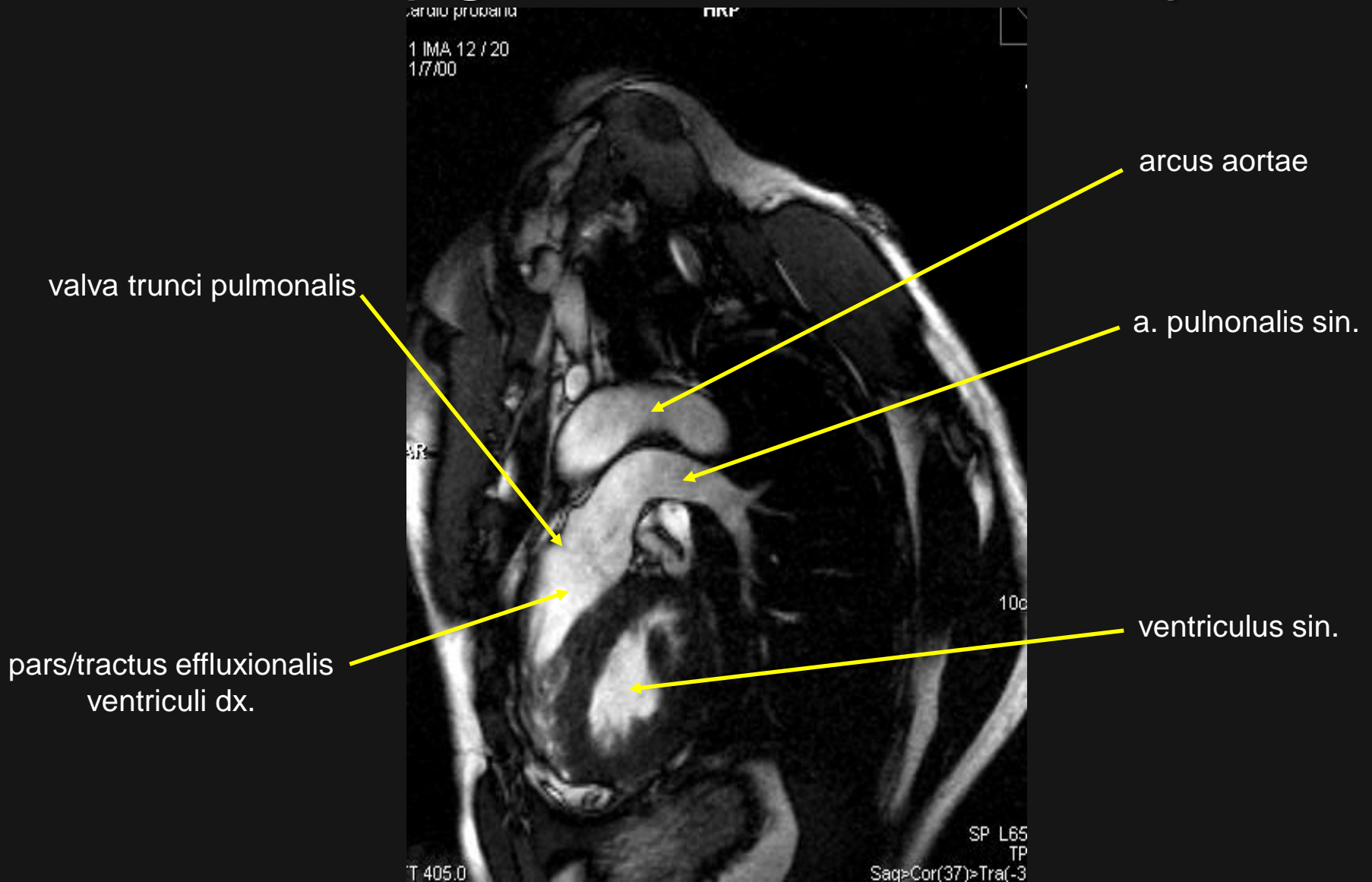
pars/tractus effluxionalis ventriculi dx.

ventriculus dx.

ventriculus dx.
(paries posterior)

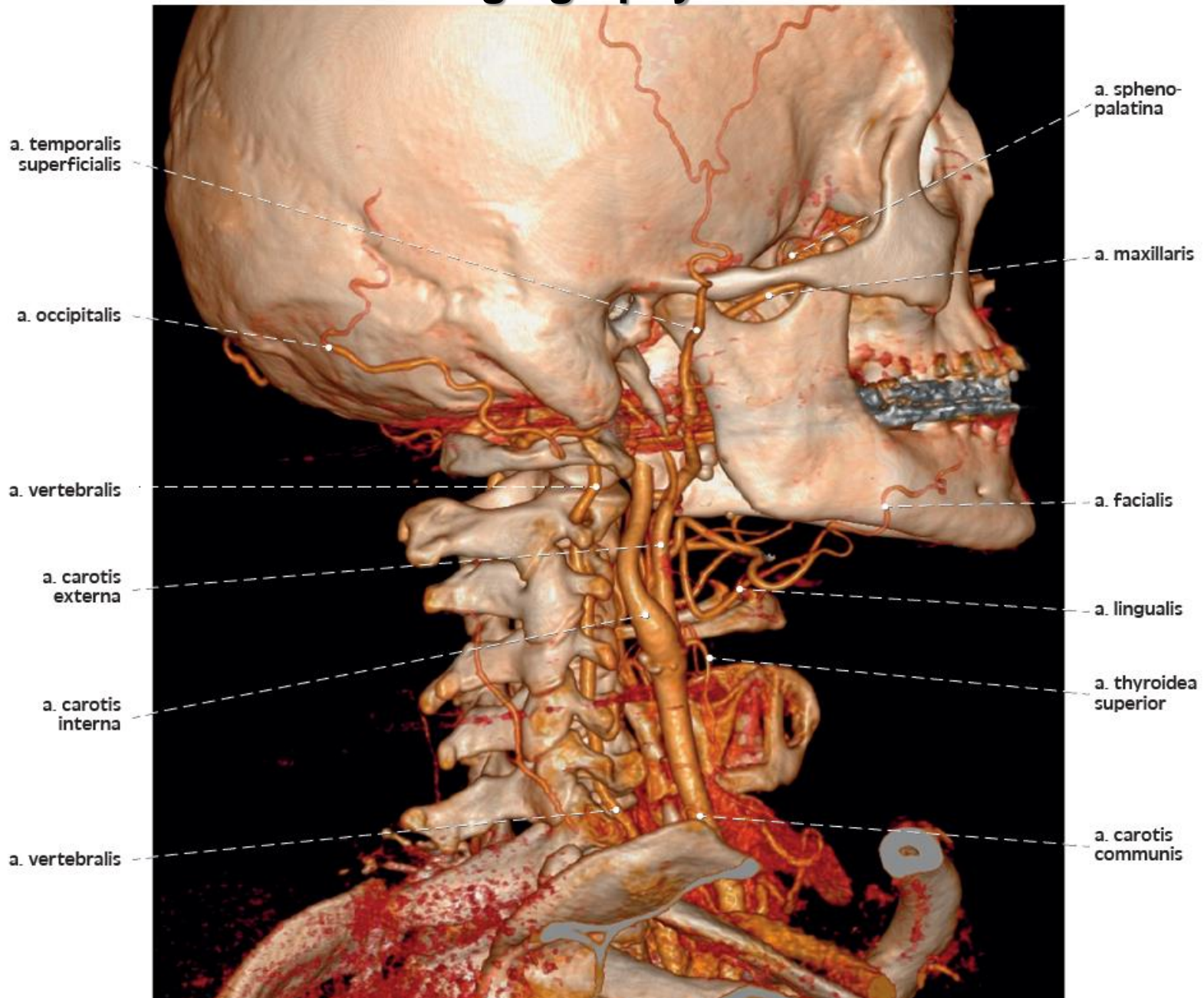
MR srdce: vtoková část pravé komory

MRI of the heart: pars/tractus inffluxionalis ventriculi dextri (right ventricular inflow tract)



3D rekonstrukce CT angiografie tepen krku a hlavy

3D reconstruction of CT angiography of the head and neck arteries



3D rekonstrukce CT angiografie plícnice

3D reconstruction of CT angiography of the truncus pulmonalis

aa. lobares superiores dx.

aa. lobares superiores sin.

a. pulmonalis sin.

truncus pulmonalis

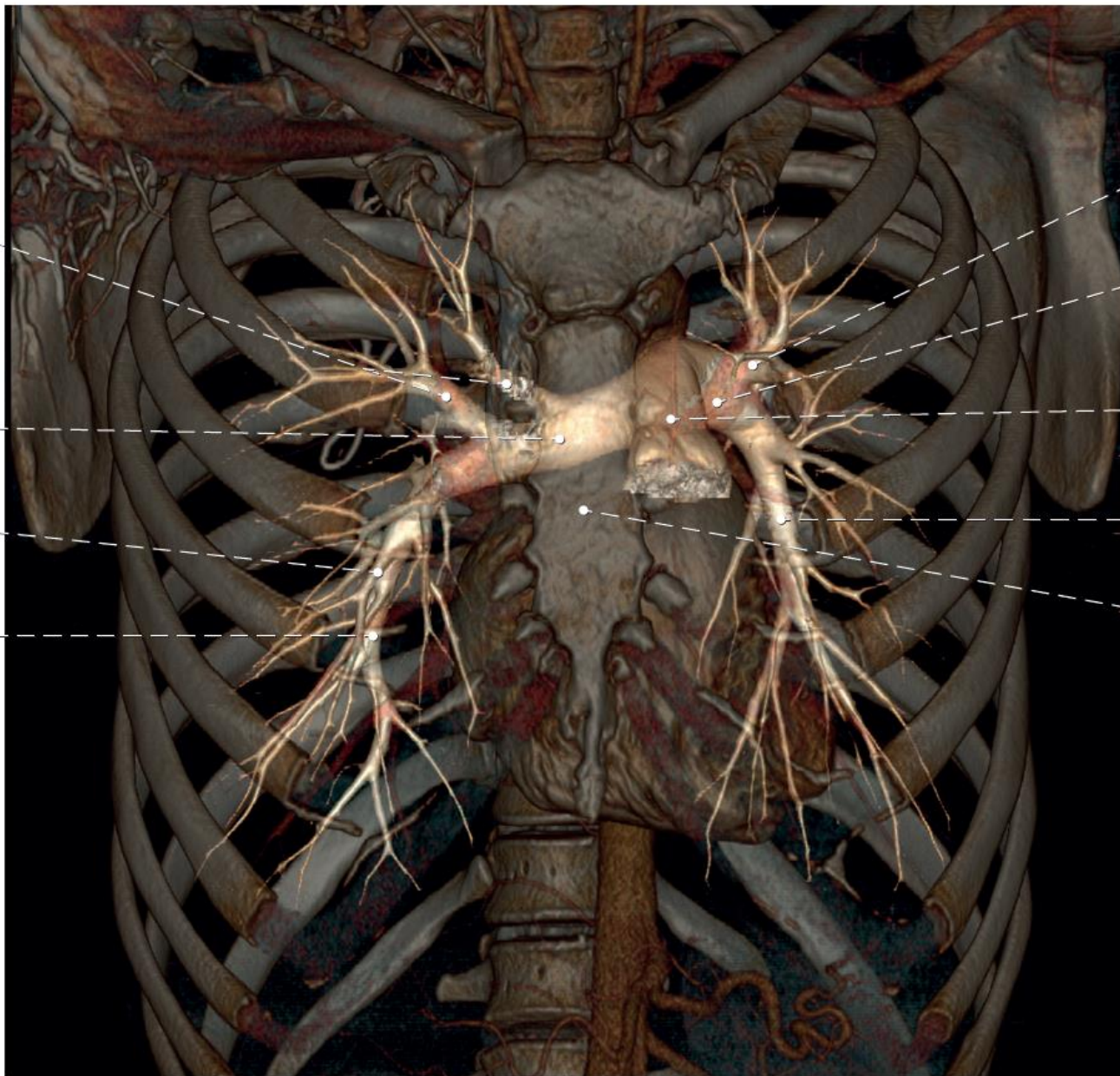
a. lobares inferiores sin.

corpus sterni

a. pulmonalis dx.

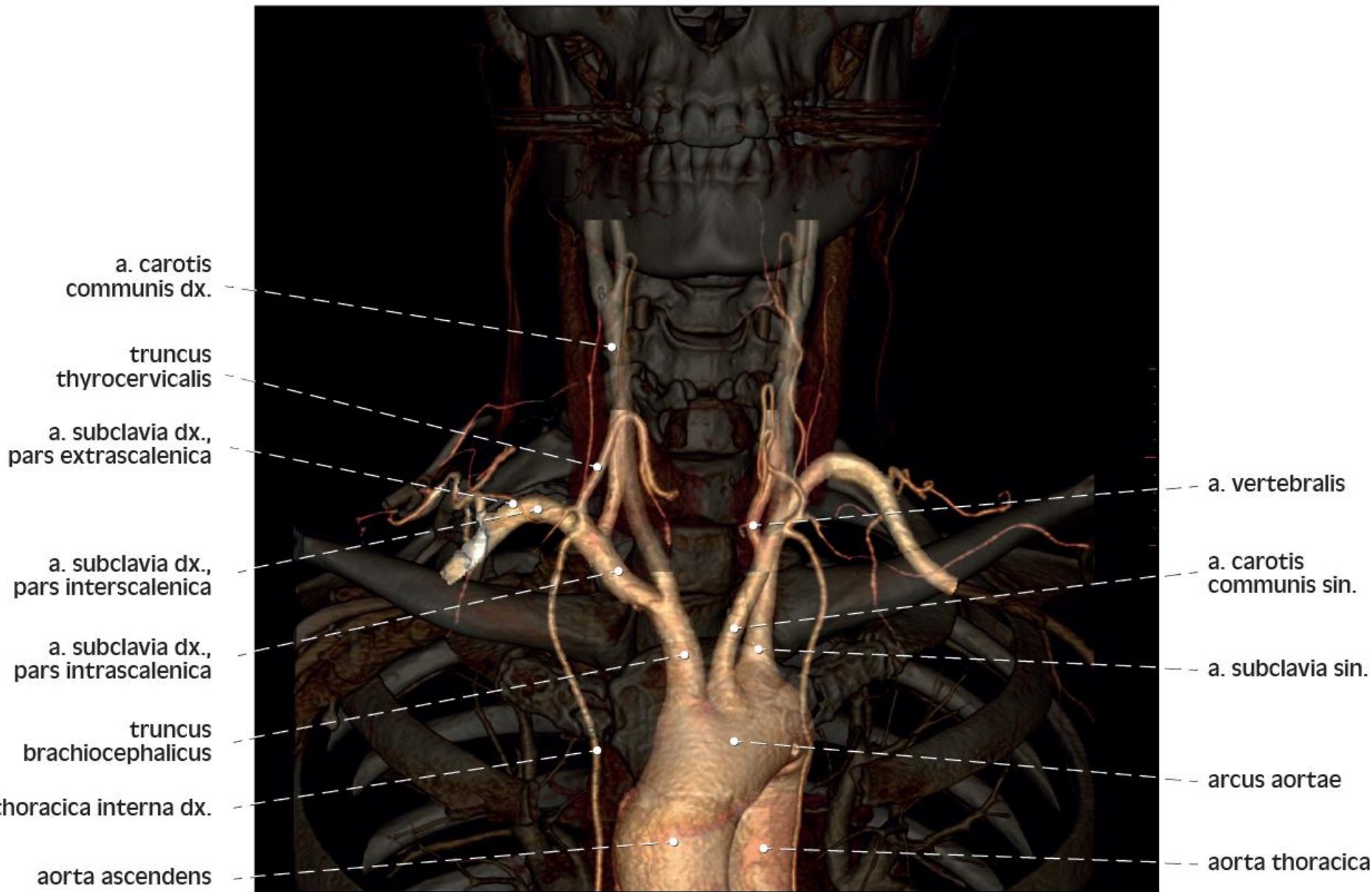
a. lobaris media

a. lobares inferiores dx.



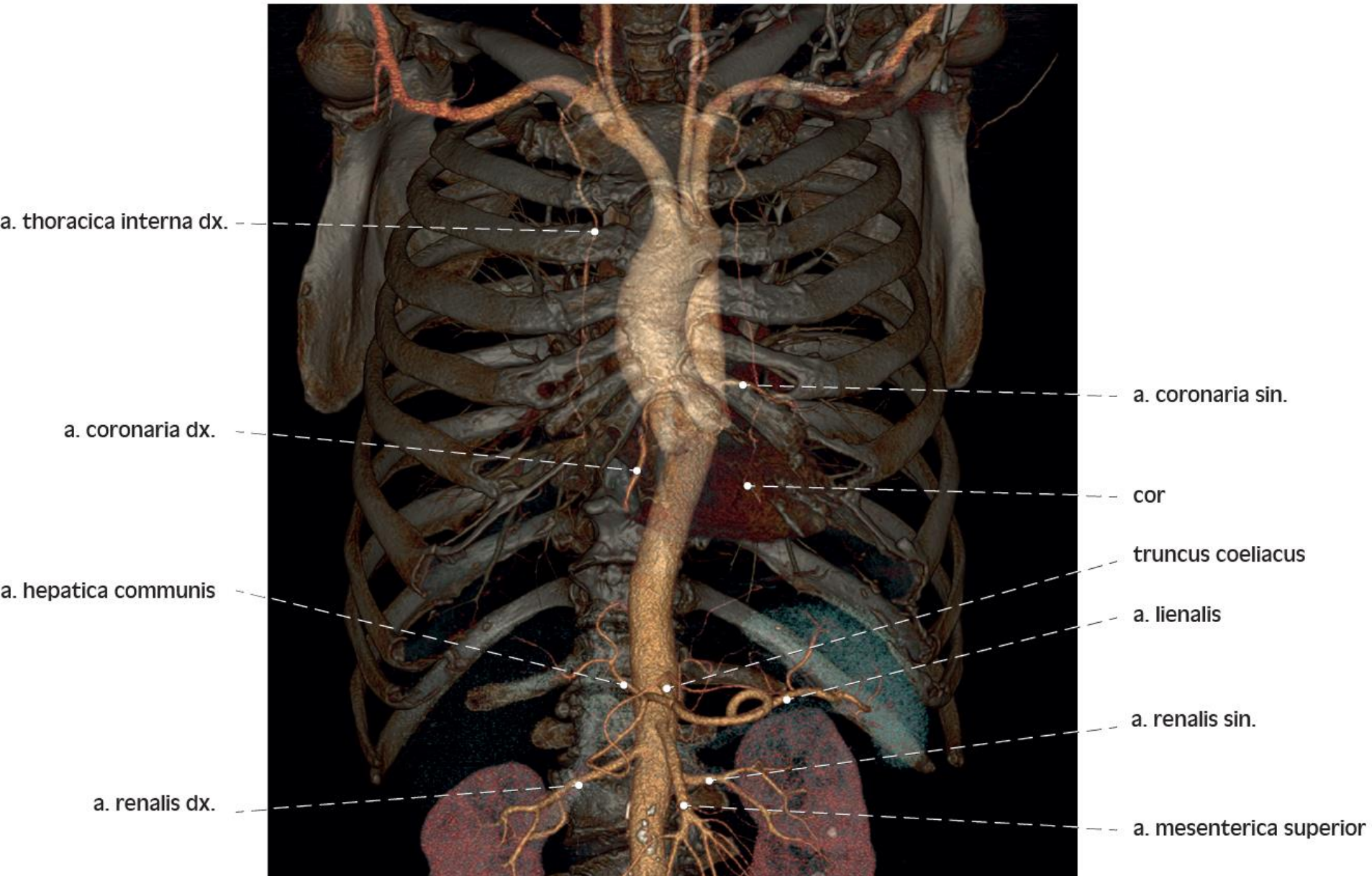
3D rekonstrukce CT angiografie srdečníce

3D reconstruction of CT angiography of the aorta



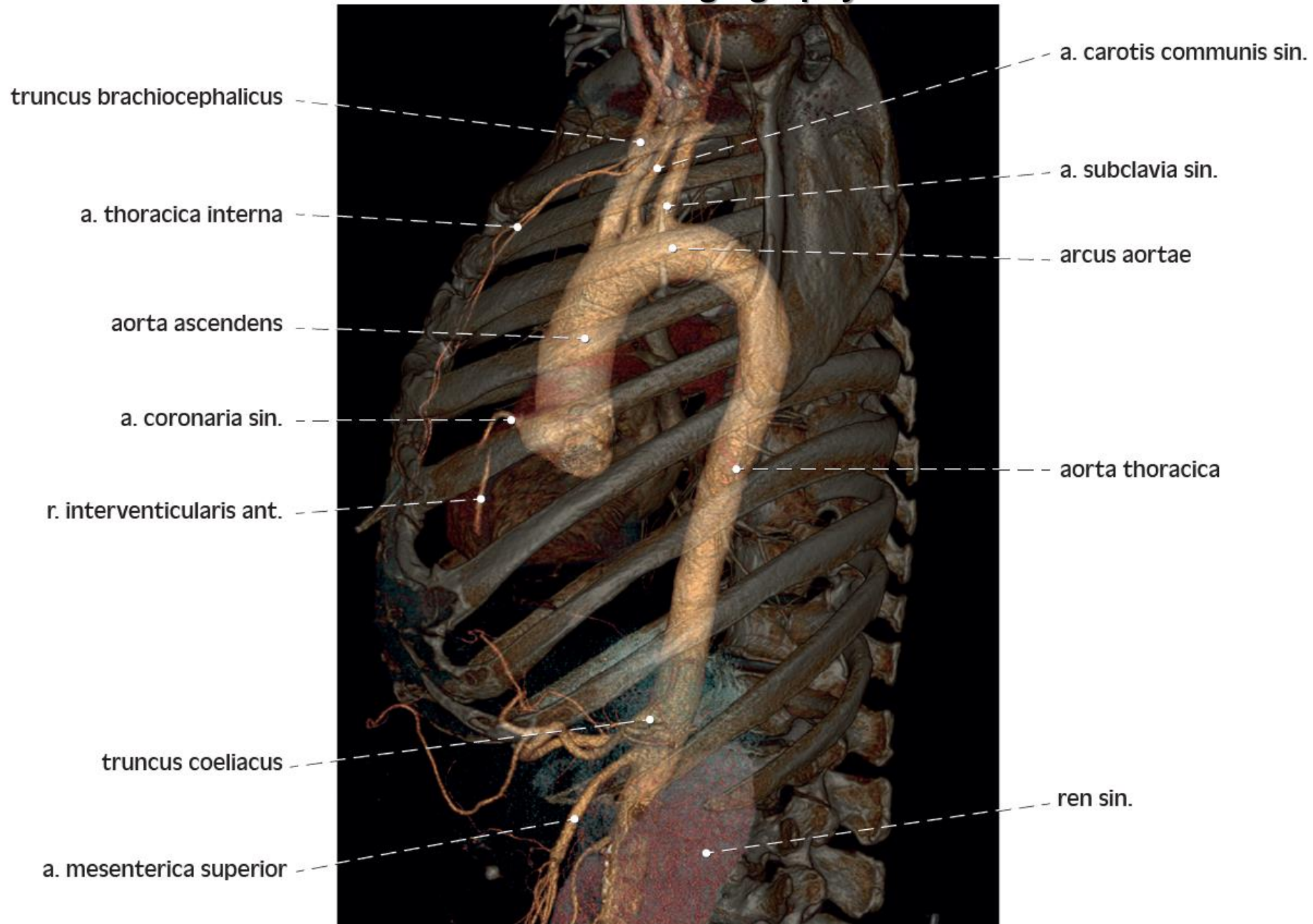
3D rekonstrukce CT angiografie srdečníce

3D reconstruction of CT angiography of the aorta



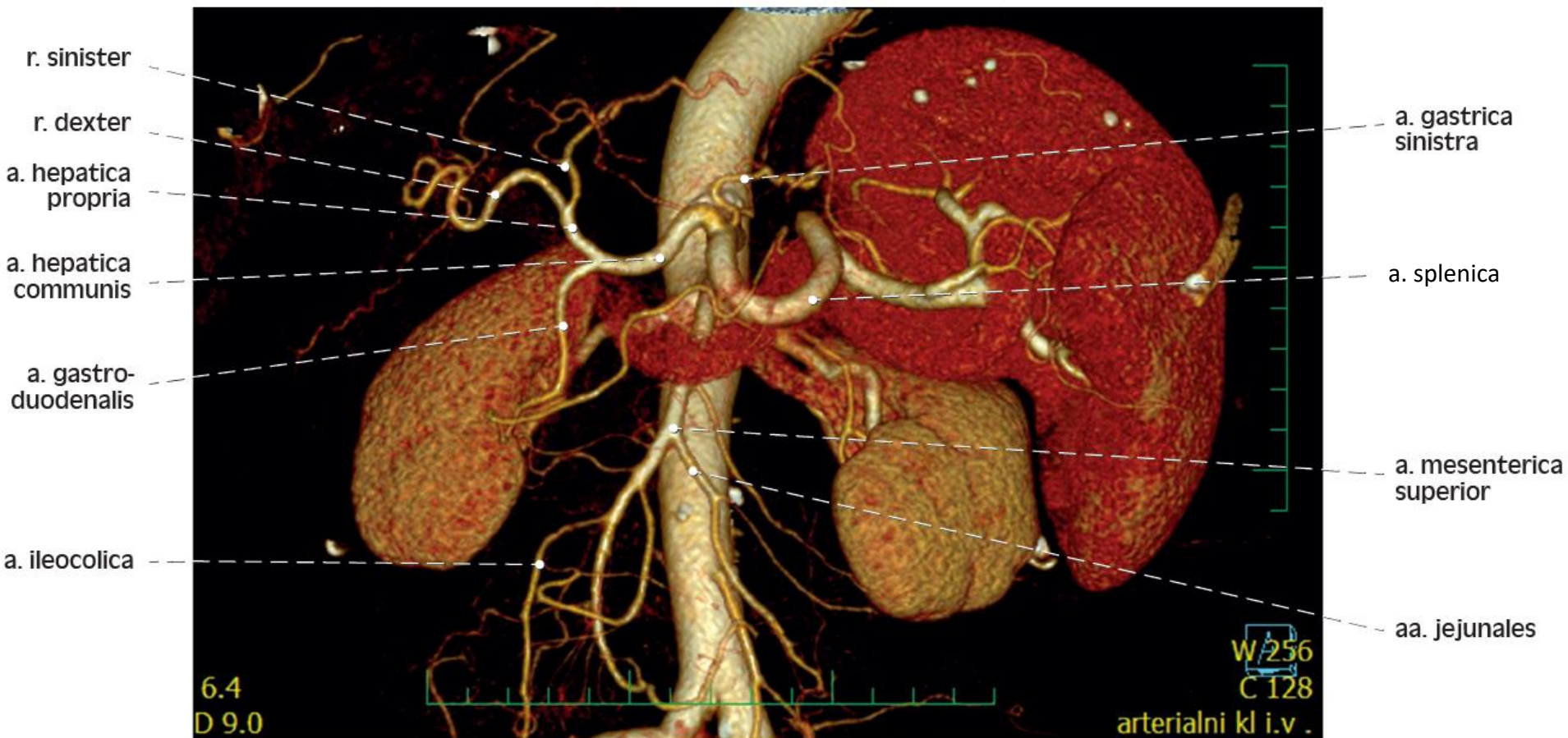
3D rekonstrukce CT angiografie srdečníce

3D reconstruction of CT angiography of the aorta



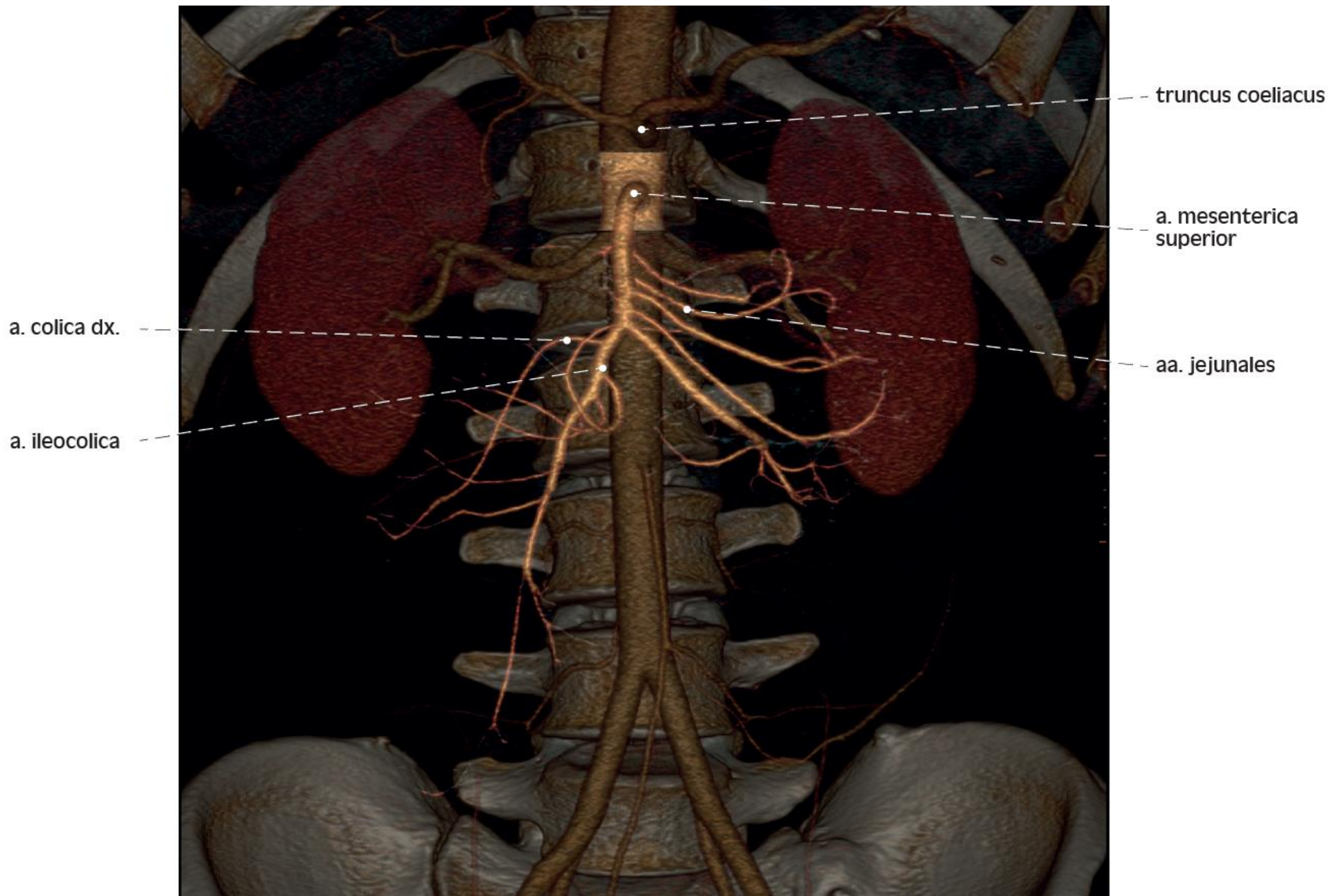
3D rekonstrukce CT angiografie břišní srdečnice

3D reconstruction of CT angiography of the aorta abdominalinalis



3D rekonstrukce CT angiografie břišní srdečnice

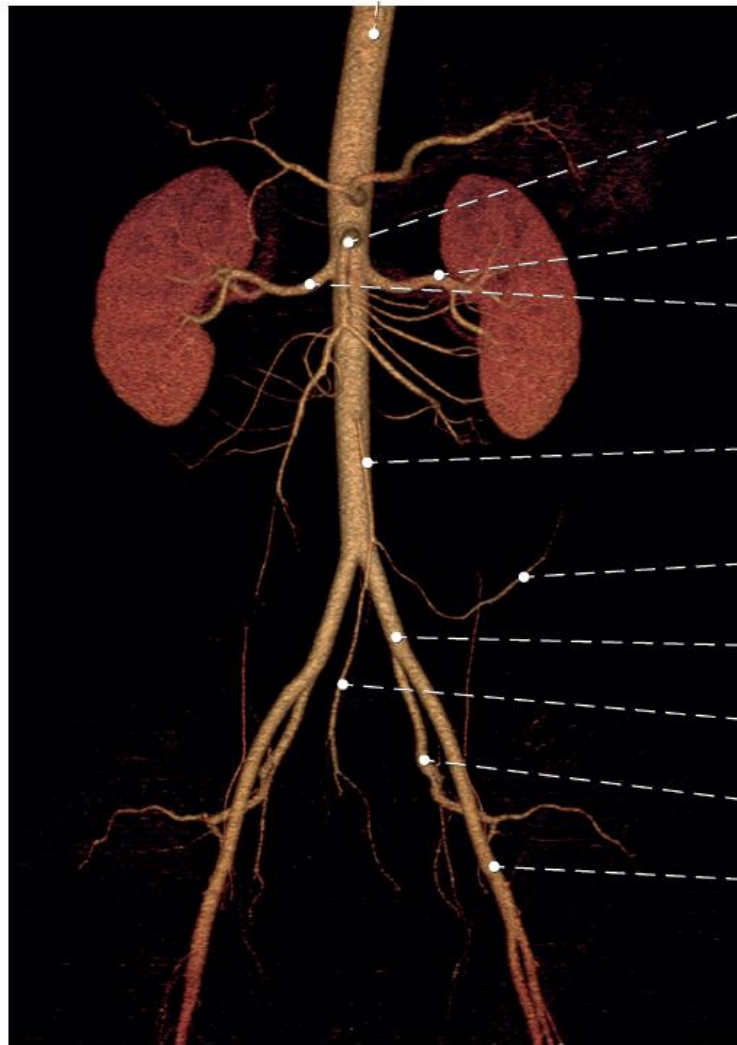
3D reconstruction of CT angiography of the aorta abdominalis



3D rekonstrukce CT angiografie břišní srdečnice

3D reconstruction of CT angiography of the aorta abdominalis

truncus coeliacus



a. mesenterica superior

a. renalis sin.

a. renalis dx.

a. mesenterica inferior

a. colica sin.

a. iliaca communis

a. rectalis superior

a. iliaca interna

a. iliaca externa

a. splenica



truncus coeliacus

a. mesenterica superior

a. mesenterica inferior

a. iliaca interna

a. epigastrica inferior

a. iliaca externa

3D rekonstrukce CT angiografie pánevních tepen

3D reconstruction of CT angiography of the arteriae iliacaе

